



ACCESS FRAME SYSTEM

Product Catalogue

UPDATED ON: – 21-02-2023

Address:

11515 CROSBY FREEWAY, HOUSTON, TX-77013, USA

Email: john.moran@technocraftgroup.com

www.technocraftgroup.com

Introduction:

Technocraft is a multi-product multinational group, which was established in 1972 by a group of technologists with the aim of manufacturing high precision and sophisticated products, for discerning worldwide markets. Technocraft enjoys a significant position in five main business industries, Scaffolding & Formwork Systems, Drum Closures, Pipes & Tubes, Engineering Services, and Cotton Yarn. We are an ISO 9001:2015 certified company. Headquartered in Mumbai (India), with overseas offices and warehouses in Manchester (U.K.), Lodz (Poland) & Budapest (Hungary), Chicago (U.S.A.), Houston (U.S.A.), and Qianjiao (China). Technocraft has attained an important qualification as a government-recognized Foreign Trading House.

Vision:

To lead the industry by providing innovative products, solutions, and support that exceed expectations.

Mission:

To positively impact the global community by providing Safe, Efficient, and Customer focused solutions in the factory and on the job site.

Values:

Quality – Trust – Leadership – Commitment – Innovation

Our Company:

The Technocraft family consists of more than 3000 skilled workers, technicians, and technologists. All of them are working towards the common goal of delivering the best quality products to our customers, around the world. The manufacturing process is continuously reviewed and upgraded with the latest technology to yield higher productivity and improved quality product. There are five manufacturing plants located near Mumbai, India providing over 50,000 square meters of production space. There is one location in China providing over 33,000 Square meters of production space.

Our History:

The company launched its first major export drive in 1977. It was recognized as an export house by the government of India in 1979. The company has won a number of awards for export excellence, since its inception, including the “Best Export Performance” awarded by the Prime Minister of India.

Milestones:

- 1972** – Opened first manufacturing unit for Drum Closures
- 1977** – Launched first major export drive
- 1979** – Recognized as an Export House
- 1980** – Expanded Drum Closure Capacity
- 1993** – Setup its first foreign subsidiary in the UK
- 1994** – Acquired Maharashtra Steel Tubes Limited
- 1997** – Yarn Unit opens, 100% EOU
- 1998** – Subsidiary in Poland opens
- 2000** – Subsidiary in Hungary opens
- 2000** – Awarded the National Award for Export Excellence by the Ministry of Commerce and Industry, Award Presented by the Prime Minister of India “Shri. Atal Bihari Vajpayee.”
- 2000** – Technosoft Information Technologies, begins providing Engineering Software and Design Services.
- 2001** – Awarded Export Excellence Award for all steel products by the Engineering Export Promotion Council – Maharashtra.
- 2003** – Began marketing Garments as – Danube Fashions Limited
- 2004** – Received the 3 Star Export House Certificate
- 2005** – Subsidiary in Germany opens
- 2005** – Launched “Haute Chilli” Brand in India
- 2006** – Subsidiary in Australia opens
- 2006** - Filed the DRHP with SEBI
- 2007** – Listed on the Bombay Stock Exchange and the National Stock Exchange
- 2008** – Built 15MW power plant
- 2009** – Established manufacturing plant in CHINA
- 2010** – Joint Venture with a Canadian company for manufacturing building formworks

2011 – Expanded product offering to include the Design & Manufacturing of custom formwork for Infrastructure Projects and Transmission & Telecom Towers

2013 – Acquired Calgary-based EPCM Company – Swift Engineering Inc.

2015 – Acquired AA International Trading LL (AAIT), in the U.S.A., to establish a full scale scaffold distribution presence in North America.

2015 – Opened a new Distribution yard in Houston, U.S.A.

2015 – Received star Export performer award from EEPIC. India

2016 – Introduced the Mach Brand of Scaffolding & Formwork Products

2018 – Introduced Mach One Monolithic Formwork system

2019 – Released the Mach Shoring Frame system for the Australian market.

2020 – Began the sale and distribution of an Access Frame system in North America.

2021 – Developed a narrow Soldier System for the New Zealand market.

2022 – Developed a Shoring Frame System for the USA market.

2023 – Developed Mäch AluPly Aluminium Wallform System for Global Market.

Technical Services:

Technocraft Industries has a staffed Design and Engineering department. This group provides innovative solutions to ever-changing challenges in the scaffold, shoring, and forming industry. They work closely with customers so that expectations are met and the project is kept on time and on budget.

Product Range:

Technocraft Industries has been manufacturing and developing new and innovative products for the scaffold and formwork industries since 1998. We offer a full range of Formwork, Industrial and Commercial scaffold products that meet or exceed industry standards.

Quality Standards:

Technocraft Industries follows BS, EN, AS/NZS, IS and ASTM standards in the designing and production of Scaffolding and Formwork systems. Production is strictly controlled within the tolerance of these standards using the latest production methods and modern machinery. Our Quality Control team is selected from long-serving and experienced personnel. The Quality Team is trained and supervised by Engineers. Products are checked during production to ensure the delivered product is on time and meets the customer's specifications and requirements. The company strictly follows the ideals of ISO 9001 and "Total Quality Management" applying these principles as a part of day-to-day operations.

Technical Know-How:

Technocraft Industries has been working in this field since 1998, our experienced technical team has the knowledge and ability to design and manufacture scaffolding & formworks systems. We have expertise in castings, forgings, press work and general fabrication allowing us to produce the products our customers need, exceeding their expectations. Knowledge and experience along with design and structural calculation enable Technocraft Industries to provide design services to their customers.

Technocraft's Advantage:

Technocraft is focused on their customer, understanding their needs, requirements, and expectations. This focus allows Technocraft to design processes, procedures and tooling in a manner that delivers products to the customer that meet required specifications and perform as expected. Technocraft is a vertically integrated manufacturer, from slitting to packing the manufacturing process occurs within the walls of their factory. This allows them the ability to monitor and control all aspects of production, keeping costs low and quality high.

Infrastructure:

- 1) Toolroom with up to date machinery
 - 1) Electronic discharge Machines (EDM)
 - 2) Vertical Machining Centre (VMC)
 - 3) CNC Lathe Machines, Shapers and other conventions machines.
 - 4) Surface and Cylindrical Grinders
 - 5) Wire Cut Machines
 - 6) Drill Machines
- 2) Mechanical Presses with the capacity of 20 tons to 1000 tons
- 3) Hydraulics presses, press brakes and shearing machines up to 4.2m wide, up to 340 tons.
- 4) Welding Machines (MIG-MAG)
- 5) Bolt forming Headers with Thread rolling and Trimming Machines
- 6) Induction melting Furnace with the capacity of 500kgs / 350 KW
- 7) Forging press up to 1600 tons.
- 8) Slitting line up to 8mm x 1800mm wide.
- 9) Three complete Tube rolling lines with open and close profile sections like round, square, rectangular and special wall form profile, steel planks etc.
- 10) Two Complete Hot Dip Galvanizing lines
- 11) Powder Coating line
- 12) Complete painting unit and Electro-plating line.

The **BEST** is yet to come

Inspection, Measuring and Testing equipment:

- 1) Digital Height Master with Granite table 250mm × 1000mm × 2000mm
- 2) Co-ordinate Measuring Machine (C.M.M). Machine size: X-600, Y-800, Z-500
- 3) Profile projector with 10X magnified
- 4) ULTRA PRECISION TRIPLE SCAN LASER,
- 5) Digital Height master
- 6) Digital Vernier and Trammels up to 4.0meters
- 7) Hardness Testing Machine
- 8) V-notch Charpy Impact Testing Machine
- 9) Spectrometer for chemical analyses
- 10) Salt spray testing machine
- 11) Ultrasonic Testing Machine (UT) and Magnetic Particle Testing Machine (MPT)
- 12) Universal Testing Machines 400kN and 600kN.
- 13) Post shore / prop testing machine up to 5.0m height
- 14) Point and UDL load testing machine up to 3.0m length product
- 15) 3 Tier and 1 Tier load testing machines to find vertical leg loads up to 6.5m height.
- 16) 10 meter length Truss & Lattice girder UDL & Point Load testing machine.

Our Quality Policy:

TECHNOCRAFT is committed to being a leader in the design and manufacturing of scaffolding and will always deliver high-quality, innovative, products that meet or exceed our customers' expectations and requirements.

TECHNOCRAFT is committed to delivering defect-free products on schedule and on budget while maintaining compliance with applicable regulatory and industry standards.

- Welding Standards conform to AWS D1.1 / D1.1M and ISO 3834
- Welding Certification per EN 1090-2 and EN 1090-3 from SLV, Germany.
- Product certification for European Props as per EN 1065:1998 from Sigma Karlsruhe, Germany.
- Techlok System tested as per EN 12810/12811 at Oxford University England.
- Proven Quality System from Design to Delivery and beyond.
 - Selection of proper material and purchased from directly steel manufacturers only.
 - Material Testing (In-house & reputed Labs).
 - Material identification system.
 - Material review process before the material is released for production.
 - In-Process Quality monitoring system to ensure quality at every stage.
 - Periodic calibration of all measuring instruments, testing equipment, and Gauges.
 - Product testing
- Traceability, all products are marked with a code that identifies the batch and supporting process control documents.

ACCESS FRAME

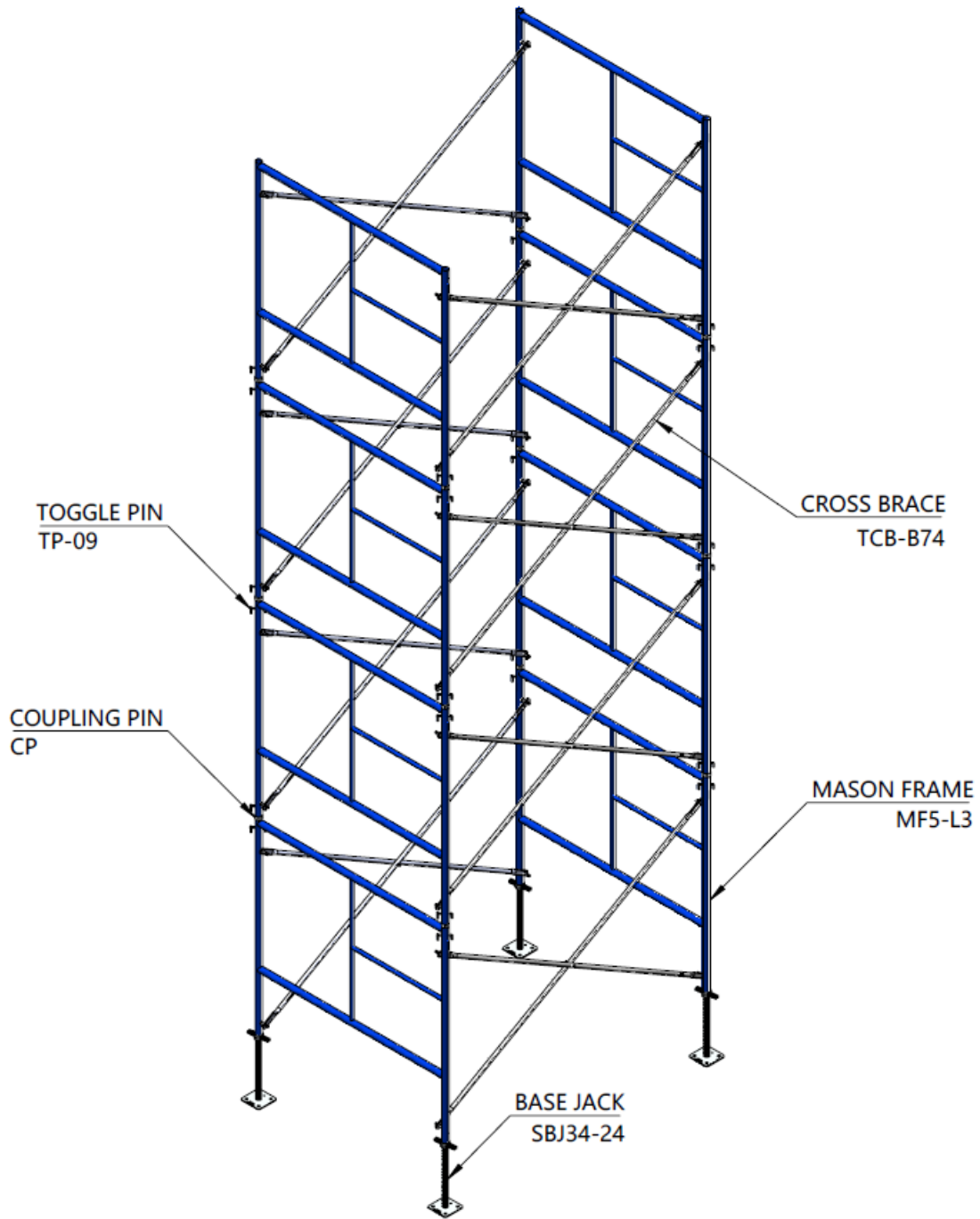


TABLE OF CONTENTS

<u>PRODUCT</u>	
MASON FRAME WITH DROP LOCK	12
NARROW FRAME WITH DROP LOCK.....	14
LADDER FRAME WITH DROP LOCK.....	15
WALK THRU FRAME WITH DROP LOCK.....	16
CROSS BRACE (SINGLE HOLE).....	17
CROSS BRACE (DOUBLE HOLE).....	18
SOLID BASE JACK	20
SOCKET JACK	21
SWIVEL SCREW JACK.....	22
BASE PLATE	23
SWIVEL BASE PLATE	24
8" X 8" U-HEAD SCREW JACK	25
4' GUARD RAIL POST (DROP LOCK).....	26
1.69" FEMALE GUARD RAIL POST (CANDY CANE LOCK)	27
GUARD RAIL	28
7' INTERNAL GUARD RAIL LEDGER	29
GOOSER.....	30
HOIST ARM	32
<u>ACCESSORIES</u>	
COUPLING PIN.....	33
7"W COUPLING PIN	34
SPRING CLIP	35
TOGGLE PIN	36
PIG TAIL CLIP	37
SPAN PIN	38
8" SWIVEL CASTER.....	39

5' STARTER BAR	40
42" UNIVERSAL WALL TIE	41
<u>BRACKETS</u>	
26"H X 28"W OUTRIGGER BRACKET	42
12" SIDE BRACKET	43
21" SIDE BRACKET	44
23" SIDE BRACKET (ANGLE)	45
21" SADDLE SIDE BRACKET (TUBE)	46
30" SADDLE SIDE BRACKET (TUBE)	47
21" END BRACKET (TUBE).....	48
15"W ACCESS STEEL LADDERS	49
15"W LADDER BRACKET	50
<u>LADDER, LADDER BRACKET, STAIRUNIT & HANDRAILS</u>	
7'W X 6'4" STAIR UNIT	51
INTERNAL HANDRAIL (7'W X 6'4")	52
OUTSIDE HANDRAIL (7'W X 6'4")	53
END RAIL PANEL	54
20" X 30" MORTAR STAND	55
VENEER JACK FRAME	56
VENEER JACK LEG	57
A-FRAME TRESTLE	58
<u>ENGINEERING & LOADING DATA</u>	
SOLID BASE JACK	60
12" SIDE BRACKET	61
21" SIDE BRACKET	62
21" END BRACKET.....	63
21" SADDLE SIDE BRACKET	64
30" SADDLE SIDE BRACKET	65
21" SOCKET JACK.....	66

SWIVEL BASE PLATE.....	67
SWIVEL SCREW JACK (SOLID).....	68
U HEAD JACK.....	69
STAIR UNIT.....	70
WALKTHRU FRAME 5'X6'4" LEG LOAD 3 TIERS.....	71
WALKTHRU FRAME 42"X6'4" LEG LOAD 3 TIERS.....	72
WALKTHRU FRAME 3'X6'4" LEG LOAD 3 TIERS.....	73
MASON FRAME 5'X6'4" LEG LOAD 3 TIERS.....	74
MASON FRAME 5'X5' LEG LOAD 4 TIERS.....	75

--	--

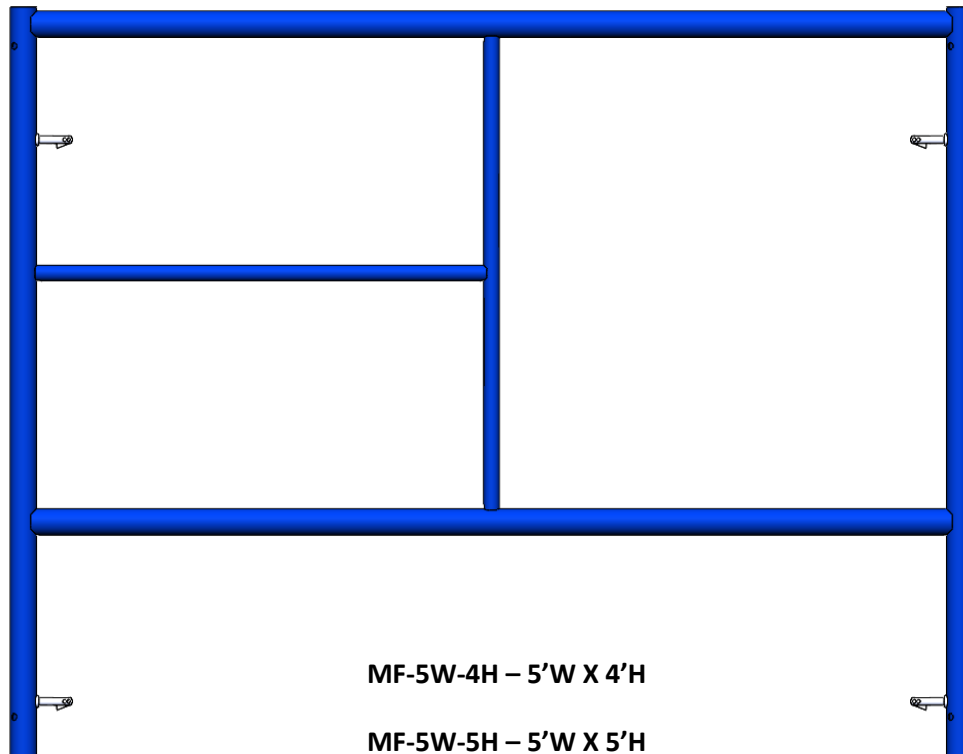
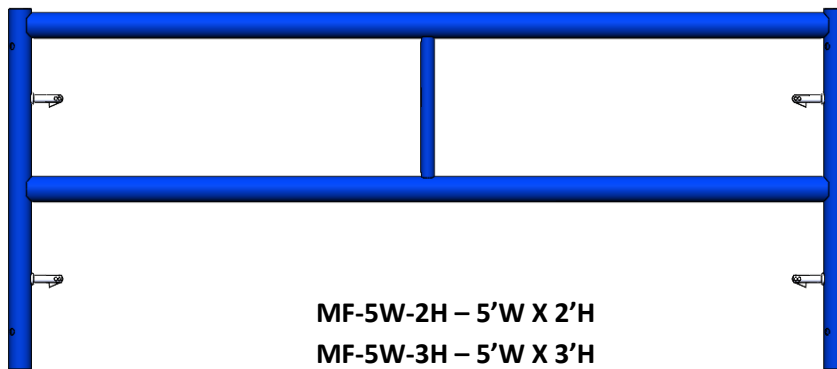
ACCESS FRAME SYSTEM - Product Identification

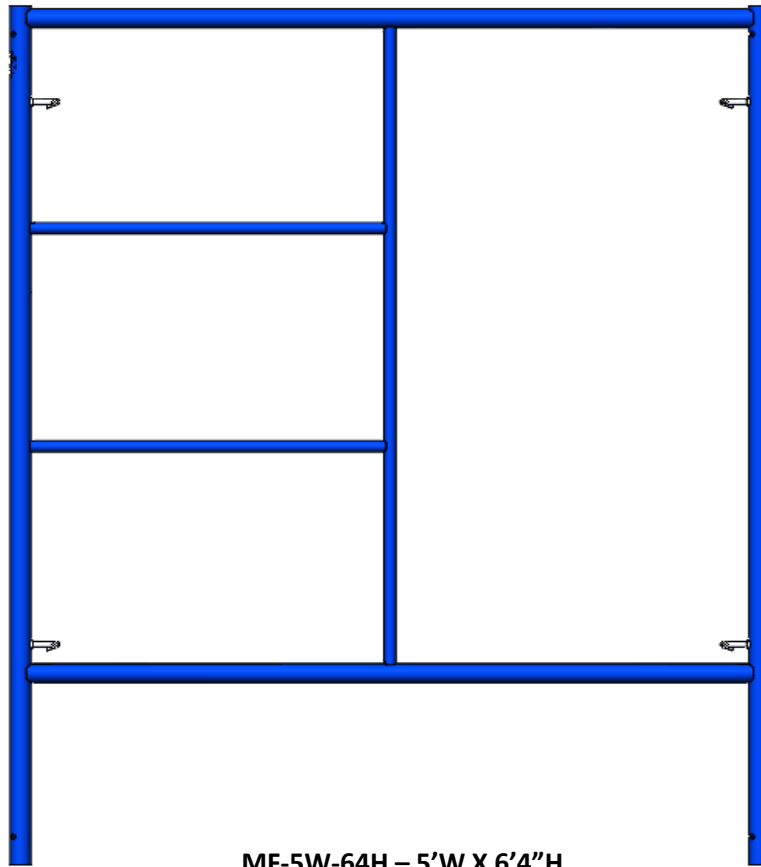
[Go To Index Page...](#)

MASON FRAME WITH DROP LOCK

Mason Frames are connected to each other via cross braces which space the Frames at a set distance.

Finish: Powder coated





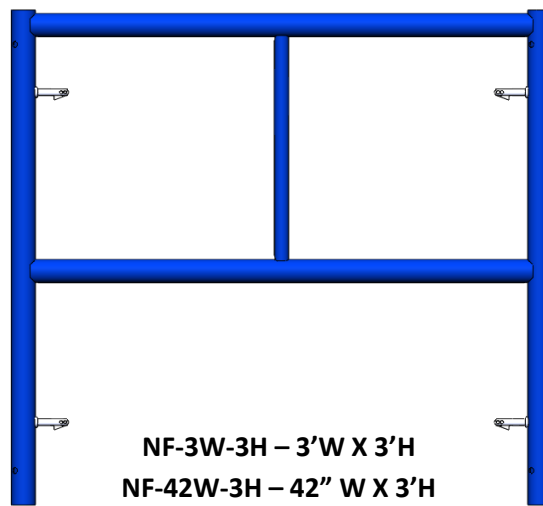
MF-5W-64H – 5'W X 6'4"H

Product Code	Description	Weight		Packing	
		Lbs	Kg	Stillage	Quantity
MF-5W-2H	Mason Frame With Drop Lock 5'W X 2'H	24.4	11.1	Rack	100
MF-5W-3H	Mason Frame With Drop Lock 5'W X 3'H	28.2	12.8	Rack	100
MF-5W-4H	Mason Frame With Drop Lock 5'W X 4'H	34.3	15.6	Rack	50
MF-5W-5H	Mason Frame With Drop Lock 5'W X 5'H	38.1	17.3	Rack	50
MF-5W-64H	Mason Frame With Drop Lock 5'W X 6'4"H	45.6	20.7	Rack	50

NARROW FRAME WITH DROP LOCK

Narrow Frames designed to work with the narrow passage, where other frames cannot be accommodated.

Finish: Powder coated



Product Code	Description	Weight		Packing	
		Lbs	Kg	Stillage	Quantity
NF-3W-3H	Narrow Frame With Drop Lock 3'W X 3'H	21.5	9.8	Rack	50
NF-42W-3H	Narrow Frame With Drop Lock 42\" W X 3'H	23.2	10.5	Rack	50

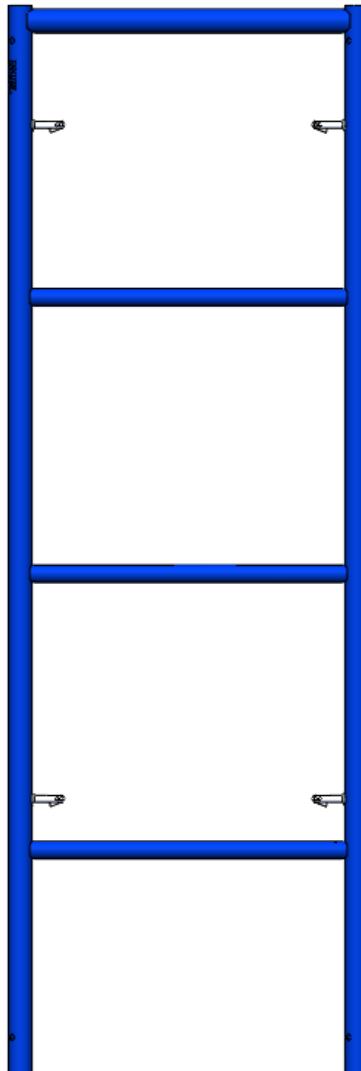
Product Identification
ACCESS FRAME SYSTEM



LADDER FRAME WITH DROP LOCK

The ladder frame scaffolding is conceived to works of simple Brickwork.

Finish: Powder coated



Product Code	Description	Weight		Packing	
		Lbs	Kg	Stillage	Quantity
LF-2W-64H	Ladder Frame With Drop Lock 2'W X 6'4"H	30.7	13.9	Rack	50

[Go To Index Page...](#)

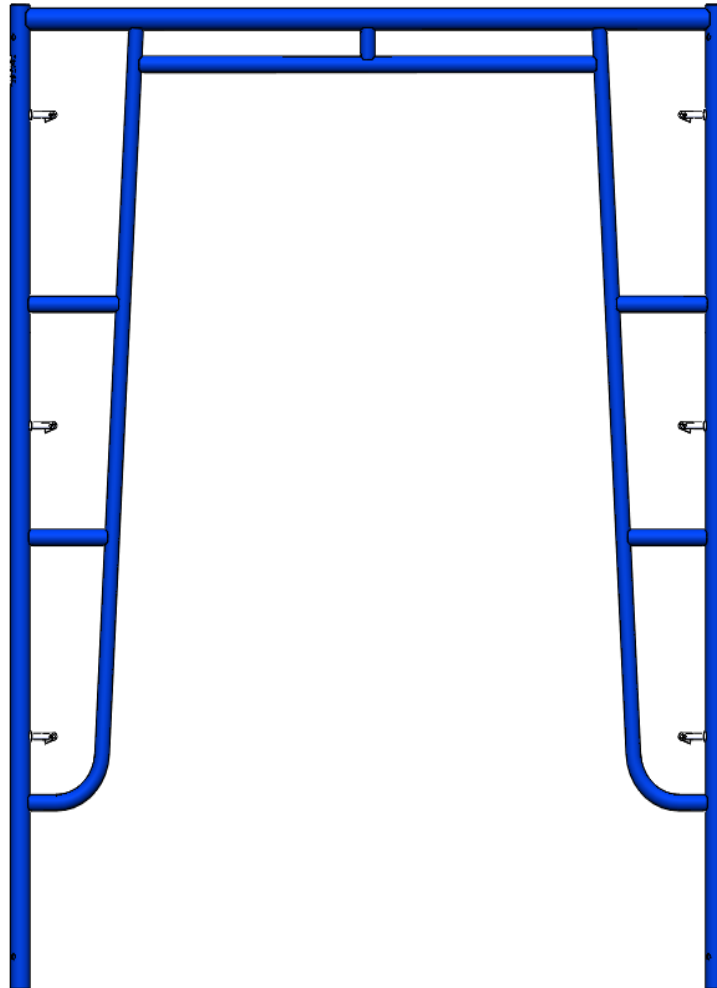
Product Identification
ACCESS FRAME SYSTEM



WALK THRU FRAME WITH DROP LOCK

Walk thru frames, you can create multiple long working Platforms on top of each other. Person can easy walk through from inside of frames.

Finish: Powder coated

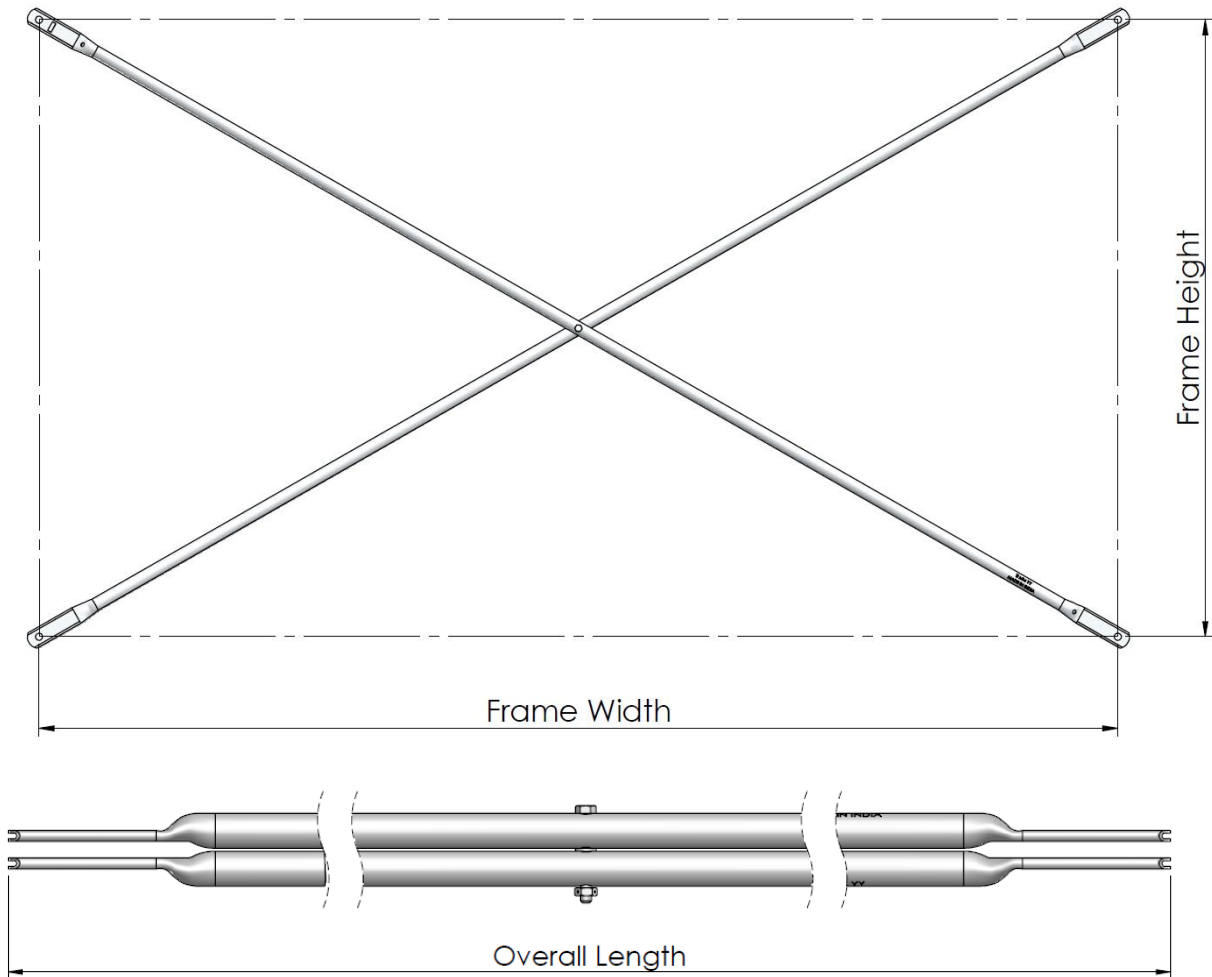


Product Code	Description	Weight		Packing	
		Lbs	Kg	Stillage	Quantity
WF-3W-64H	Walk Thru Frame-Drop Lock 3' X 6'4"	41.3	18.8	Rack	100
WF-5W-64H	Walk Thru Frame-Drop Lock 5' X 6'4"	46.6	21.2	Rack	100
WF-42W-64H	Walk Thru Frame-Drop Lock 42" X 6'4"	42.4	19.3	Rack	100

CROSS BRACE (SINGLE HOLE)

Cross braces are used to connect two frames to keep vertical as per the specified distance.

Finish: HDG

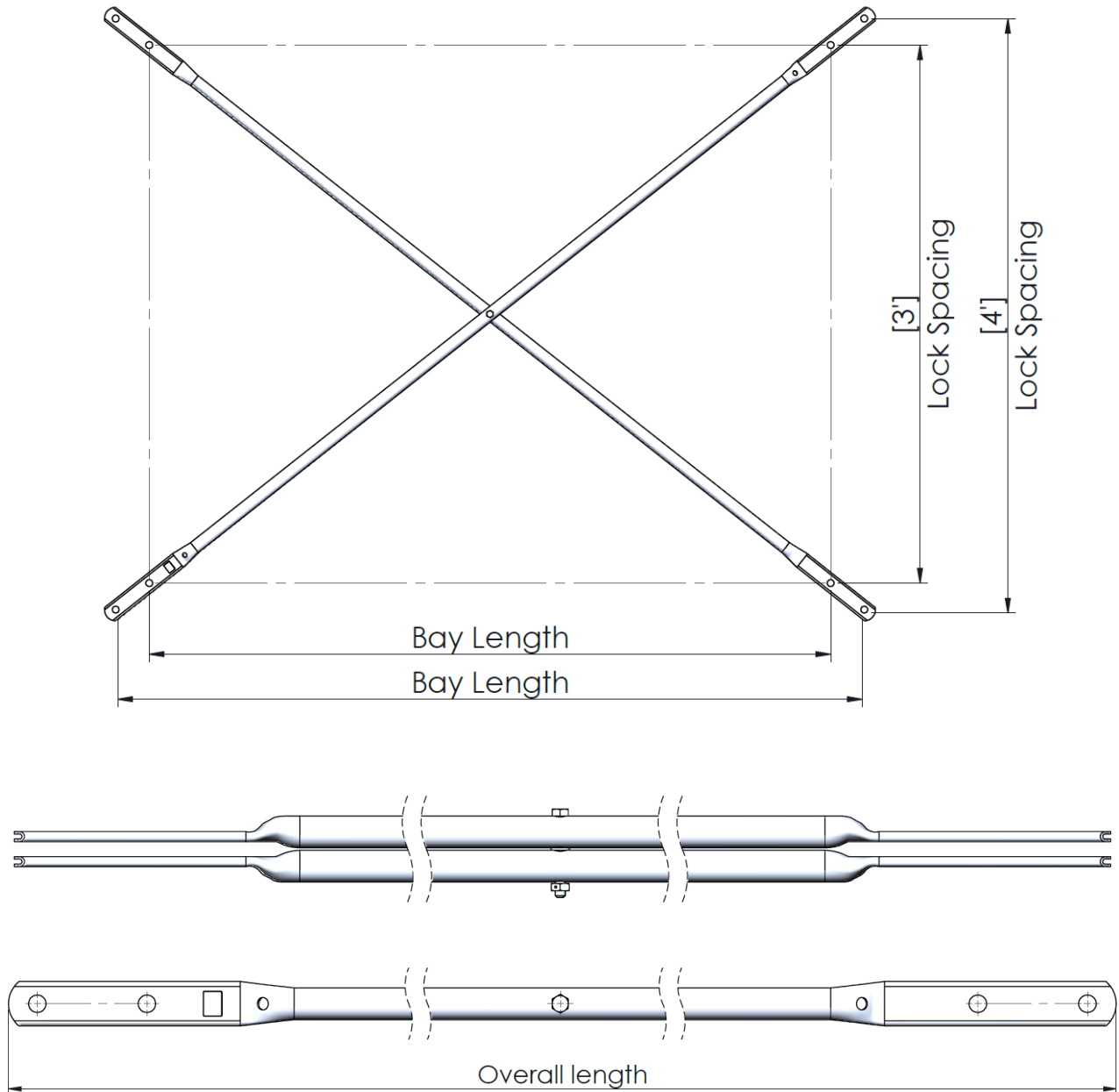


Product Code	Description	Frame Size		Overall Length		Weight		Packing	
		Feet	MM	Ft-In	MM	Lbs	Kg	Stillage	Quantity
TCB-B71	Tubular Cross Brace (Single Hole)	7'X1'	2133 X 305	7'2.6"	2201.0	11.4	5.2	Rack	250
TCB-B72	Tubular Cross Brace (Single Hole)	7'X2'	2133 X 609	7'5"	2265.0	11.7	5.3	Rack	250
TCB-B101	Tubular Cross Brace (Single Hole)	10'X1'	3048 X 305	10'2"	3109.0	15.8	7.2	Rack	250
TCB-B102	Tubular Cross Brace (Single Hole)	10'X2'	3048 X 609	10'4"	3154.0	16.3	7.4	Rack	250

CROSS BRACE (DOUBLE HOLE)

Cross braces are used to connect two frames to keep vertical as per the specified distance.

Finish: HDG



Product Identification
ACCESS FRAME SYSTEM



Lock Spacing	Bay Length						
	4'	5'	6'	7'	8'	10'	
3'	TCB-434	TCB-534	TCB-634	TCB-734	TCB-834	TCB-1034	
4'	TCB-434	TCB-534	TCB-634	TCB-734	TCB-834	TCB-1034	
Overall Length	(Ft-In)	5'9.6"	6'6.6"	7'4.3"	8'2.5"	9'1"	10'11"
	MM	1770	1997	2244	2503	2772	3329
Weight	Lbs	8.8	10.1	12.3	12.8	14.2	16.9
	Kg	4.0	4.6	5.6	5.8	6.5	7.7
Packing	Stillage	Rack	Rack	Rack	Rack	Rack	Rack
	Quantity	250	250	250	250	250	250

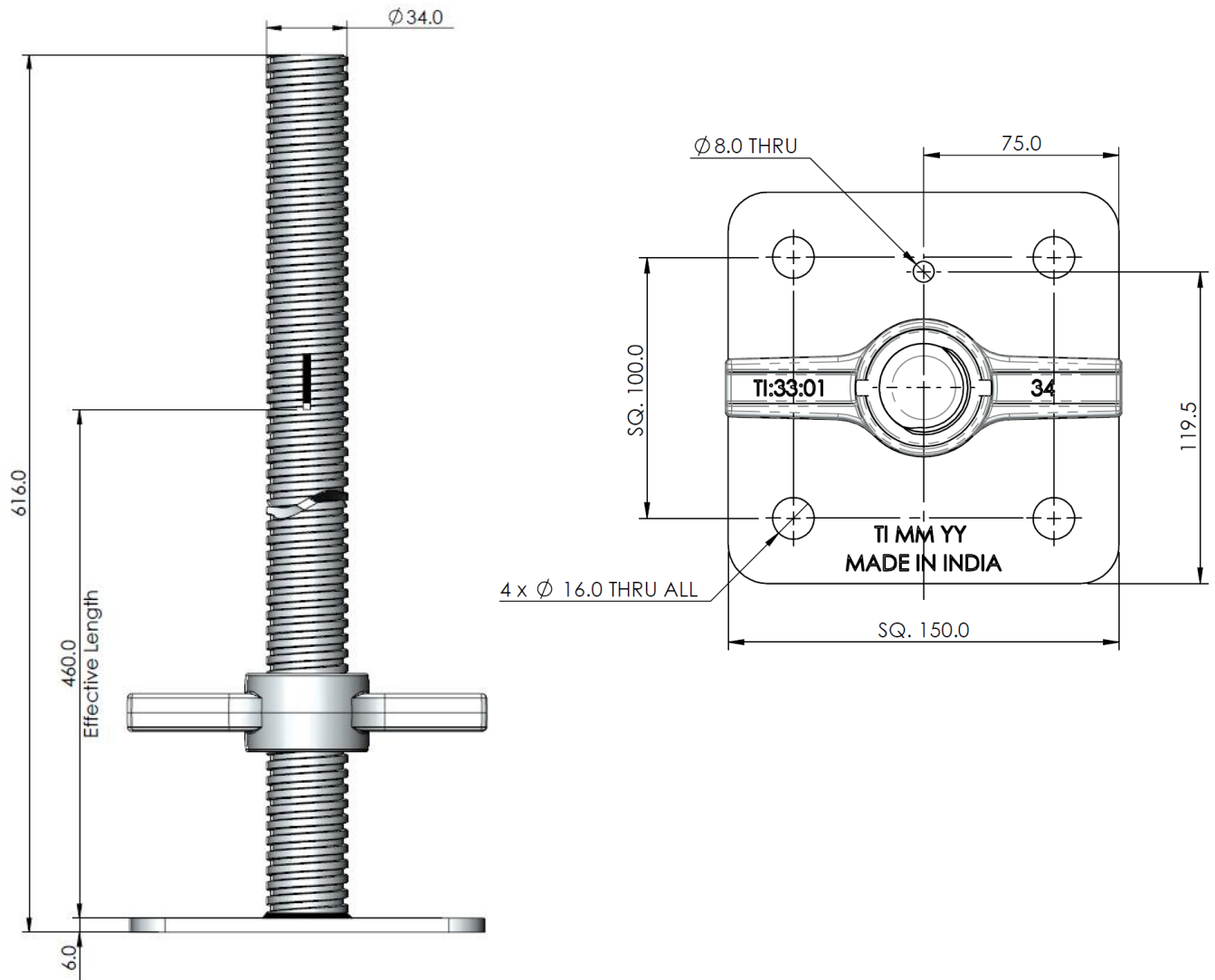
Product Identification
ACCESS FRAME SYSTEM



SOLID BASE JACK

The Base Jack is used as a starting base for Access frames. The vertical adjustment of the nut allows for the access frame to be level and plumb on uneven surfaces.

Finish: HDG



Product Code	Description	Weight		Packing	
		Lbs	Kg	Stillage	Quantity
SBJ34-24-DN	Solid Base Jack	12.0	5.5	Rack	200

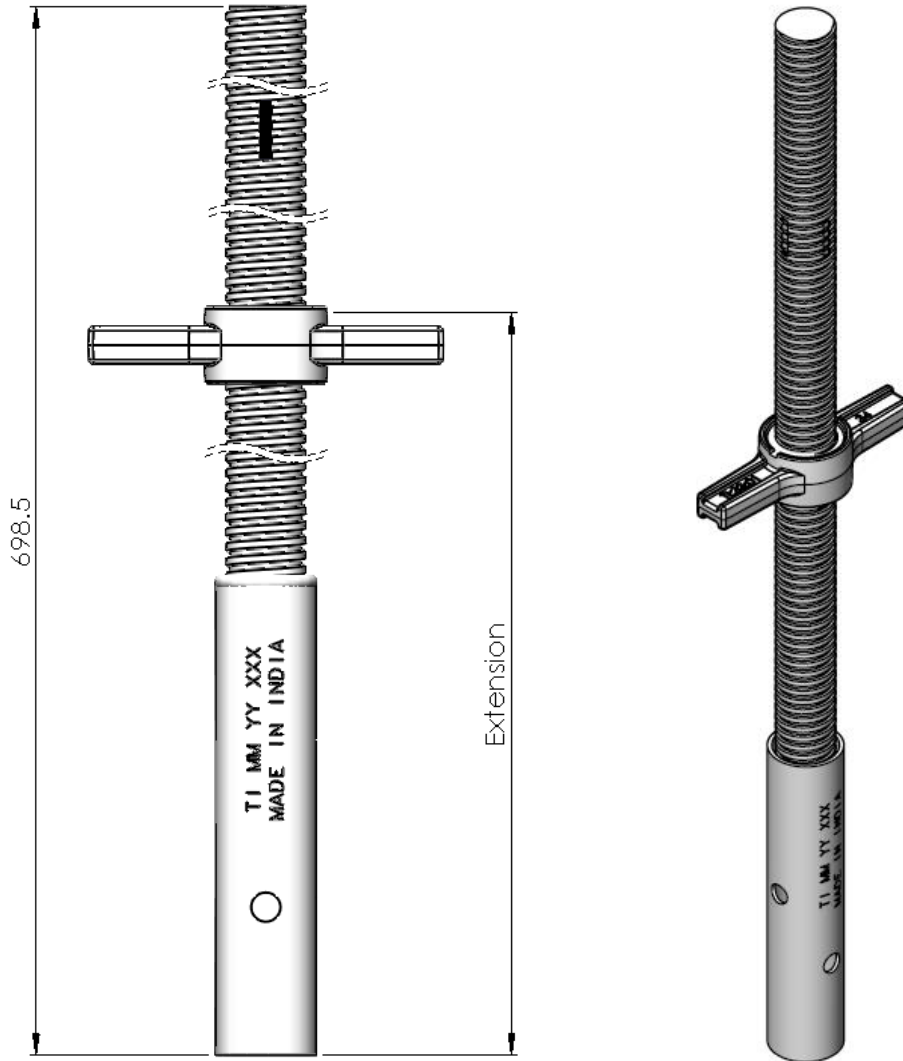
Product Identification
ACCESS FRAME SYSTEM



SOCKET JACK

To use in mobile tower above the caster wheel.

Finish: HDG



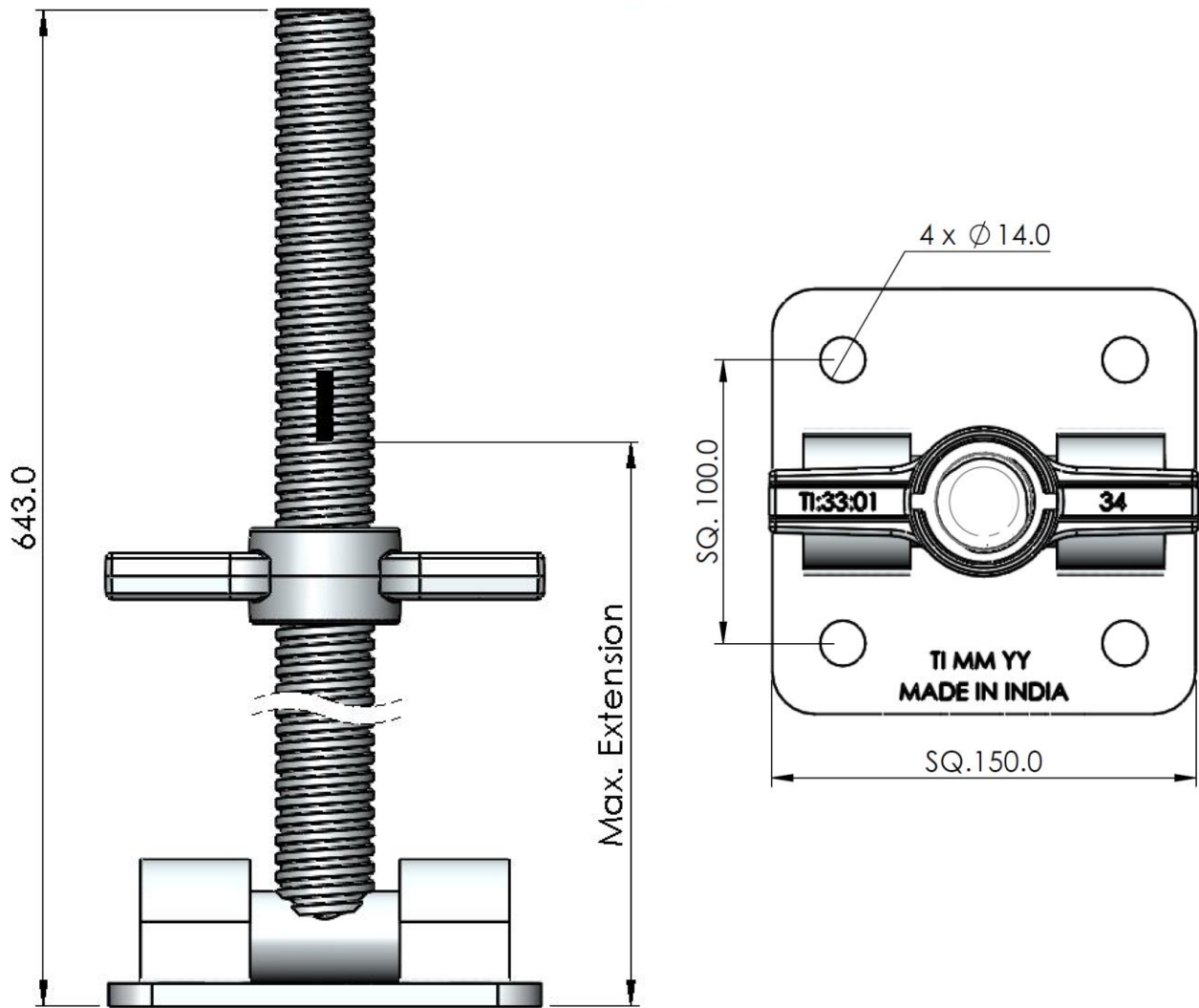
Product Code	Description	Min. Extension		Max. Extension		Weight		Packing	
		Ft-In	MM	Ft-In	MM	Lbs	Kg	Stillage	Quantity
SBJ34-SOC-DN	Solid Jack With Socket	9"	230.0	1'9"	545.0	10.8	4.9		

[Go To Index Page...](#)

SWIVEL SCREW JACK

The Swivel Screw Jack is used as a starting base for access frame. The vertical adjustment of the nut allows for the access frame to be level and plumb on uneven and sloped surfaces.

Finish: HDG



Product Code	Description	Max. Extension		Weight		Packing	
		Ft-In	MM	Lbs	Kg	Stillage	Quantity
SSBJ34-24-DN	Swivel Screw Jack (Solid)	1'7.3"	490.0	15.62	7.10	Rack	250

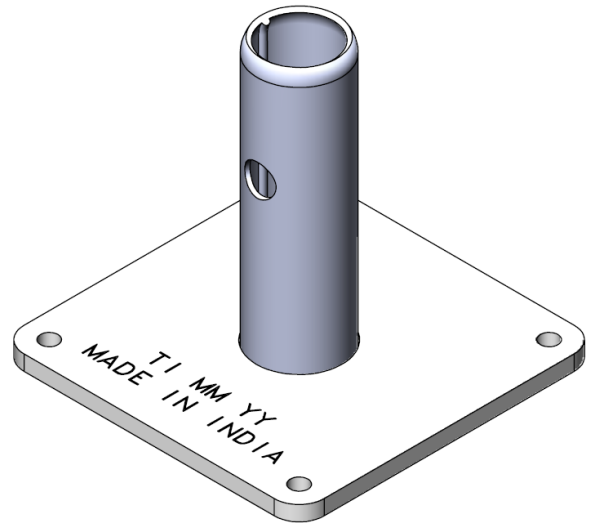
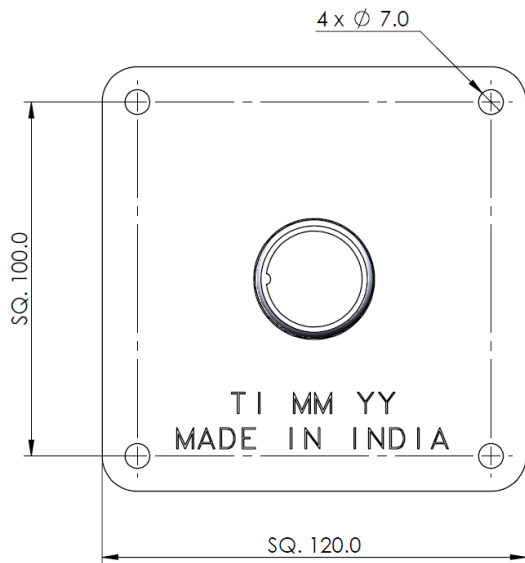
Product Identification
ACCESS FRAME SYSTEM



BASE PLATE

Base Plates can be used in lieu of the Base Jack below the Access Frame leg when Minimum height is required.

Finish: HDG

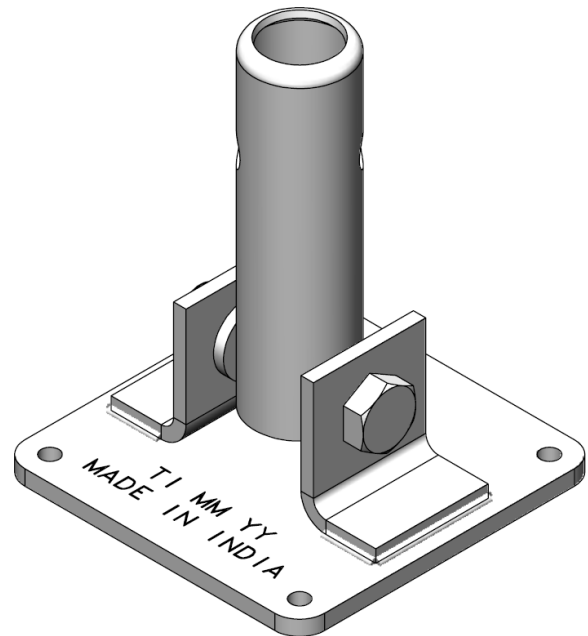
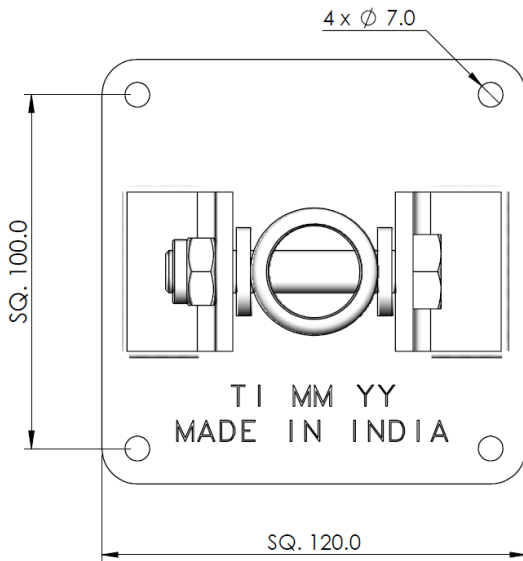


Product Code	Description	Weight		Packing	
		Lbs	Kg	Stillage	Quantity
BPF-34-G	Base Plate	1.72	0.78	Basket	20

SWIVEL BASE PLATE

Swivel Base Plate is used on inclined surfaces at the end of access frame.

Finish: HDG



Product Code	Description	Weight		Packing	
		Lbs	Kg	Stillage	Quantity
SBP-36-G	Swivel Base Plate	2.84	1.29	Basket	20

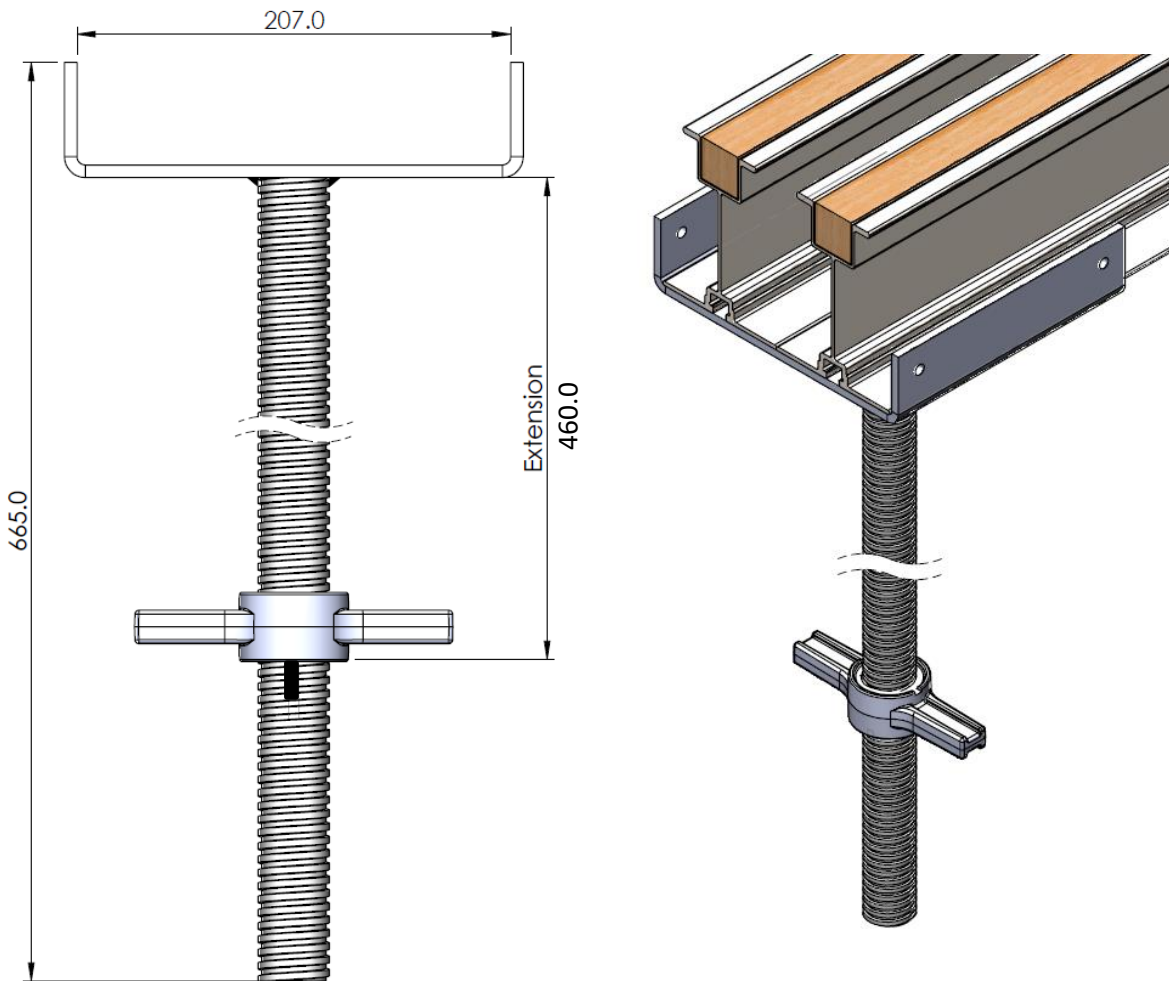
Product Identification
ACCESS FRAME SYSTEM



8" X 8" U-HEAD SCREW JACK

The Adjustable U-Head is a versatile part that can be used at the top or bottom of Access System. The U-Shaped head is used to center the access frame on a beam when building up off of a beam or when supporting a beam in a shoring application.

Finish: HDG

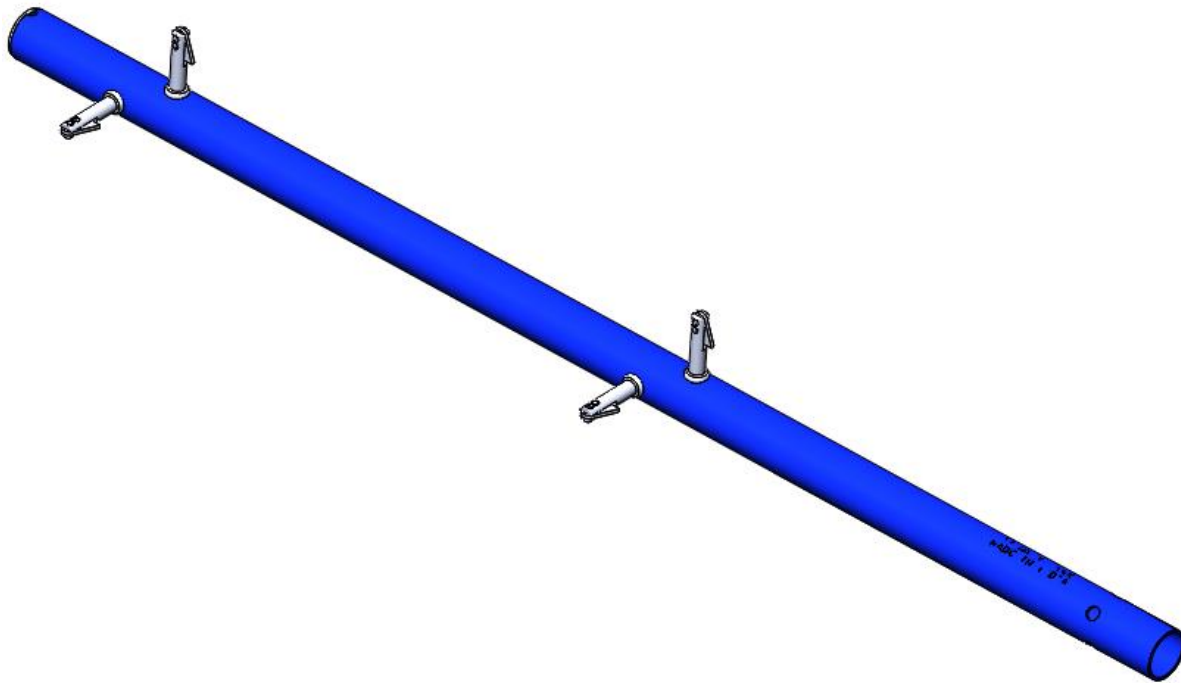


Product Code	Description	Weight		Packing	
		Lbs	Kg	Stillage	Quantity
SUH34-24-DN	8" X 8" U-Head Solid Screw Jack	16.3	7.4	Rack	50

4' GUARD RAIL POST (DROP LOCK)

Guardrails are a common and convenient way to protect employees from falls. They can be used to guard walking surfaces, openings, roof edges, catwalks and also from edges on scaffolds, suspended work platforms, forklift platforms, elevating work platforms and other working surfaces.

Finish: Powder coated

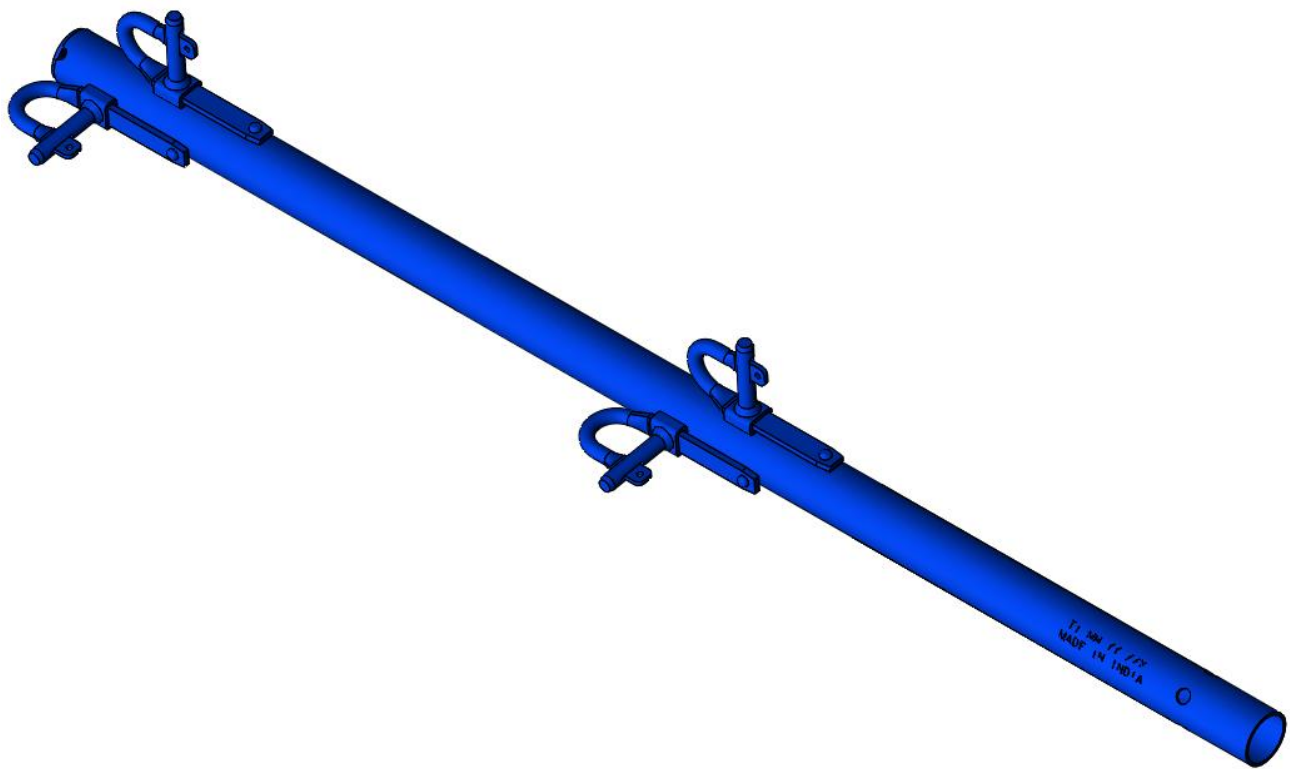


Product Code	Description	Weight		Packing	
		Lbs	Kg	Stillage	Quantity
GRP-L3-DL	Guard Rail Post 4-Ft (Drop Lock)	7.0	3.2		

1.69" FEMALE GUARD RAIL POST (CANDY CANE LOCK)

Guardrails are a common and convenient way to protect employees from falls. They can be used to guard walking surfaces, openings, roof Edges, catwalks and also from edges on scaffolds, suspended work Platforms, forklift platforms, elevating work platforms and other Working surfaces.

Finish: Powder coated



Product Code	Description	Weight		Packing	
		Lbs	Kg	Stillage	Quantity
GRP-FL-44	1.69" Female Guard Rail Post	7.96	3.62	Rack	150

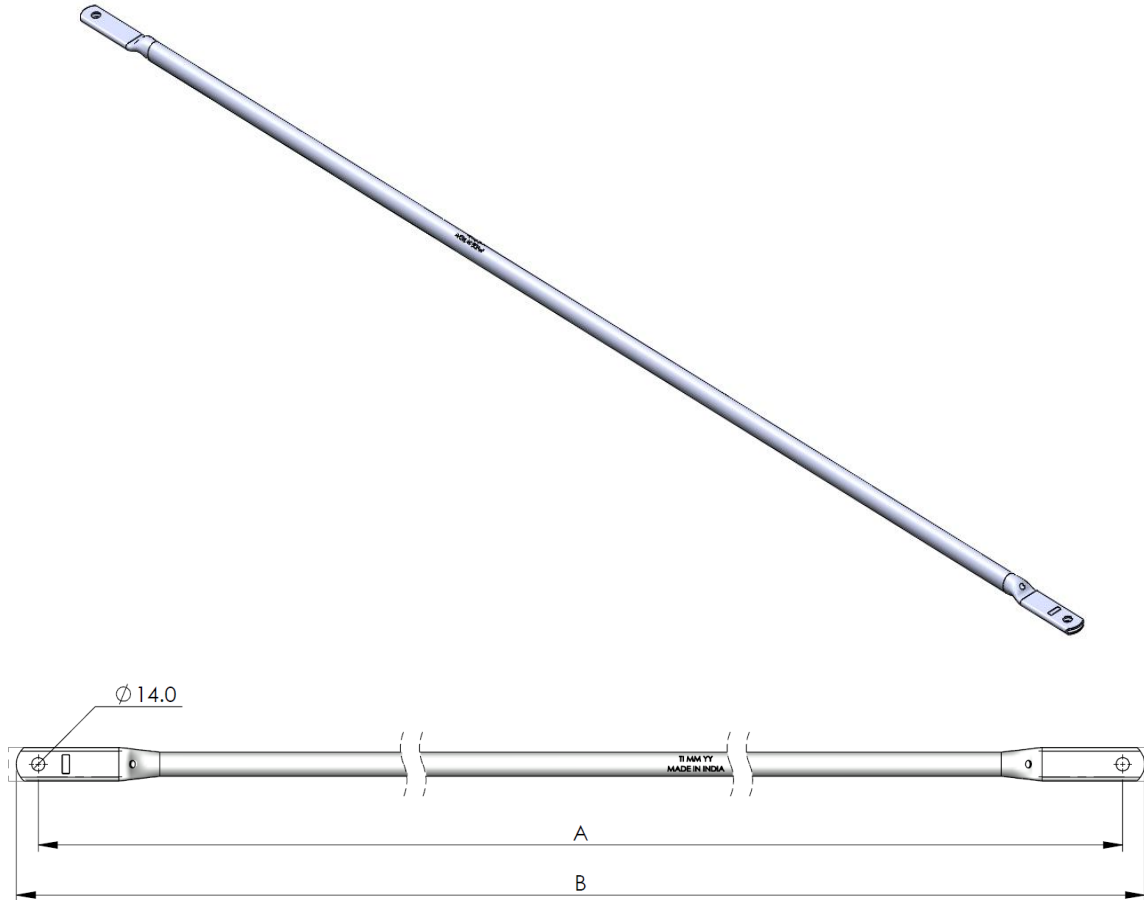
Product Identification
ACCESS FRAME SYSTEM



GUARD RAIL

The Scaffold tower guard rail system is used to keep scaffold Safe and prevent accidental falls.

Finish: HDG

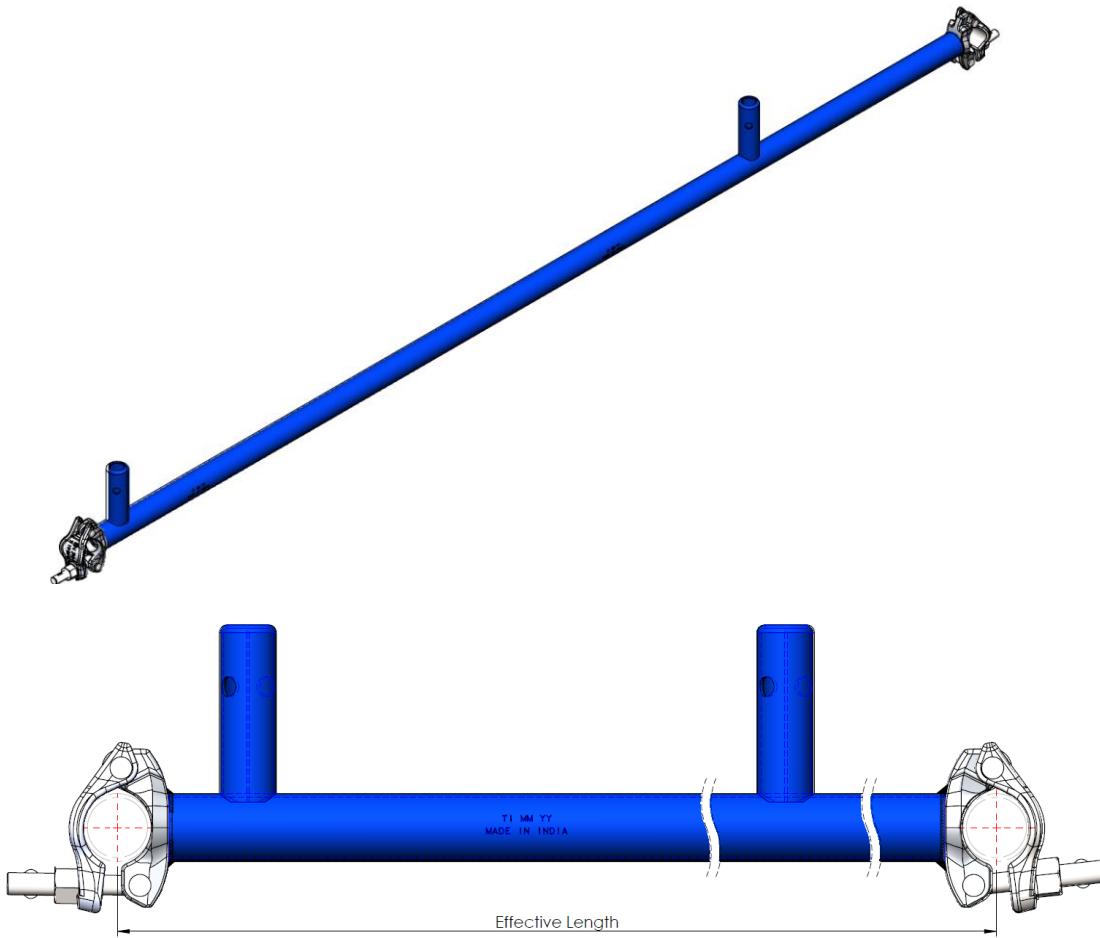


Product Code	Description	C/C Distance (A)		Overall Distance (B)		Weight		Packing	
		Ft-In	MM	Ft-In	MM	Lbs	Kg	Stillage	Quantity
GR3	Guard Rail Tube	3'	914.4	3'2"	960.4	2.5	1.1	Rack	500
GR36	Guard Rail Tube	3'6"	1066.8	3'8"	1112.8	2.9	1.3	Rack	500
GR5	Guard Rail Tube	5'	1524.0	5'2"	1570.0	4.0	1.8	Rack	500
GR7	Guard Rail Tube	7'	2133.6	7'2"	2179.6	5.5	2.5	Rack	500
GR10	Guard Rail Tube	10'	3048.0	10'2"	3094.0	7.9	3.6	Rack	500

7' INTERNAL GUARD RAIL LEDGER

The scaffold guard rail Ledger is used to keep People safe and prevent accidental falls.

Finish: Powder coated



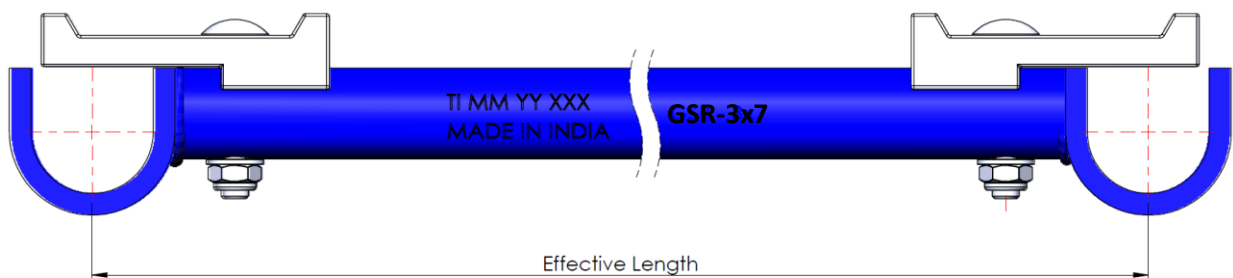
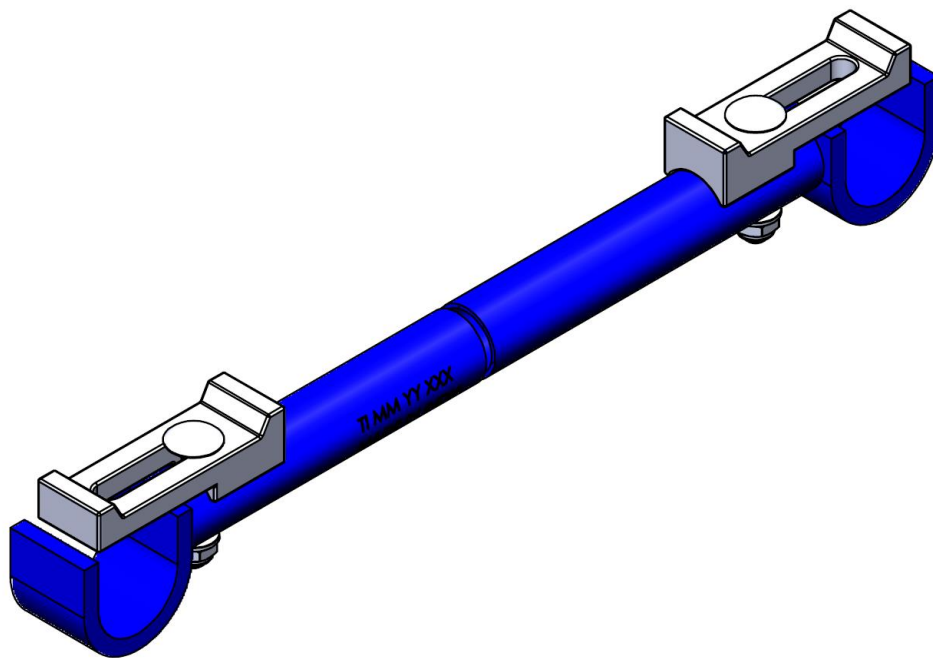
HEAVY DUTY COUPLER (EYE-BOLT)
 TECHNOCRAFT Recommends
 Tightening Torque
 45-60 ft. Lbs (60-80 Nm)
 Flange Nut Size: 22.0 mm

Product Code	Description	Effective Length		Weight		Packing	
		Ft-In	MM	Lbs	Kg	Stillage	Quantity
5TRT-ISU-00	7' Internal Guard Rail Ledger	7'	2133.6	16.74	7.61		

GOOSER

The Gooser ensures your Scaffolding stays square, which is critical when Connecting Hook-On Decks and Guard Rails

Finish: Powder coated



Product Identification
ACCESS FRAME SYSTEM



Product Code	Description	Effective Length		Weight		Packing	
		Ft-In	MM	Lbs	Kg	Stillage	Quantity
GSR-12	7' Gooser	12'	3657.6	15.8	7.2		
GSR-5x10	7' Gooser	11'2"	3408.4	15.0	6.8		
GSR-3x10	7' Gooser	10'5"	3182.1	14.1	6.4		
GSR-10	7' Gooser	10'	3048.0	13.6	6.2		
GSR-8x5	7' Gooser	5'5"	2875.5	13.2	6.0		
GSR-9	7' Gooser	9'	2743.2	12.8	5.8		
GSR-5x7	7' Gooser	8'7"	2622.6	12.3	5.6	Rack	200
GSR-3x7	7' Gooser	7'7"	2320.9	11.2	5.1		
GSR-7	7' Gooser	7'	2134.0	10.6	4.8		
GSR-78	7' Gooser	6'6"	1981.2	10.1	4.6		
GSR-6	7' Gooser	6'	1828.8	9.5	4.3		
GSR-5	7' Gooser	5'	1524.0	8.6	3.9		
GSR-4	7' Gooser	4'	1219.2	7.5	3.4		
GSR-42	7' Gooser	3'6"	1066.8	7.0	3.2		
GSR-3	7' Gooser	3'	914.0	6.4	2.9		
GSR-2	7' Gooser	2'	609.6	5.3	2.4		

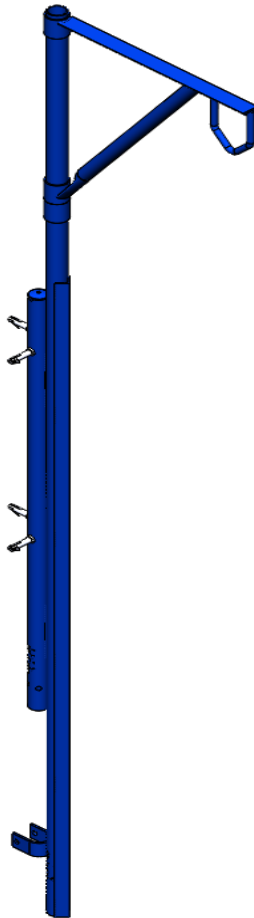
Product Identification
ACCESS FRAME SYSTEM



HOIST ARM

This tool is to be used with the wheel well to hoist equipment and Material up and down the scaffolding tower making the more effective and easier.

Finish: Powder coated

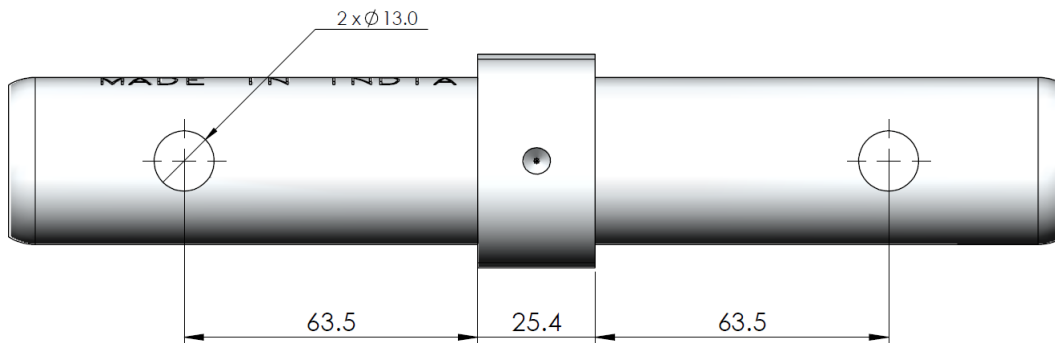
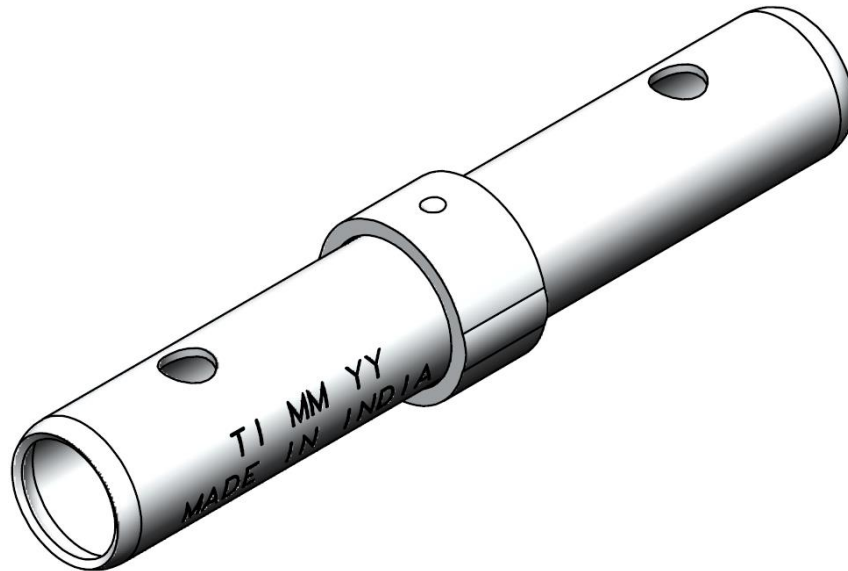


Product Code	Description	Weight		Packing	
		Lbs	Kg	Stillage	Quantity
HAB-20-SFW	Hoist Arm	34.7	15.8		

COUPLING PIN

Coupling Pin are used to connect two frame together on top.

Finish: Electroplated



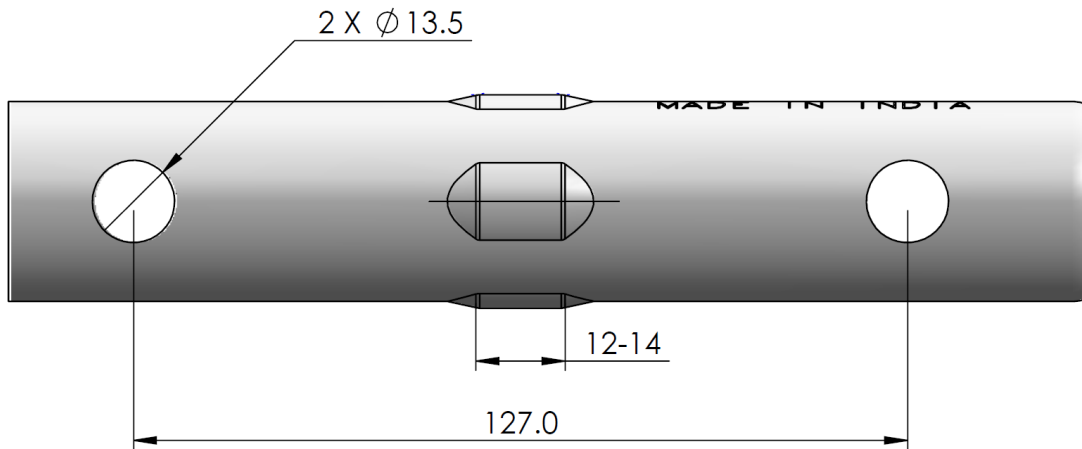
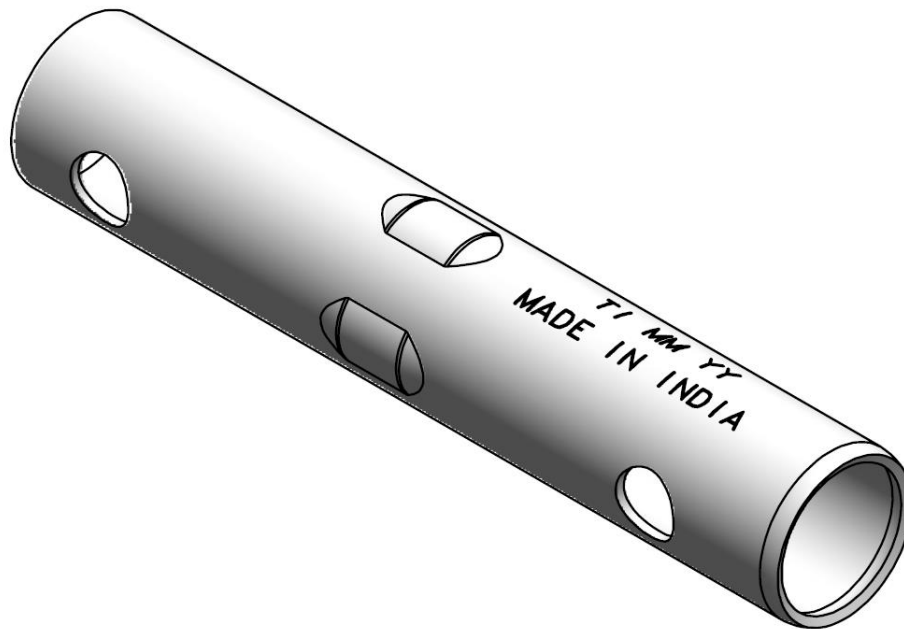
*50PC per Reinforced Cardboard Box

Product Code	Description	Weight		Packing	
		Lbs	Kg	Stillage	Quantity
CP	Coupling Pin	1.1	0.5	Basket	1500*

7"W COUPLING PIN

Coupling Pin are used to connect two frame together on top.

Finish: Electroplated



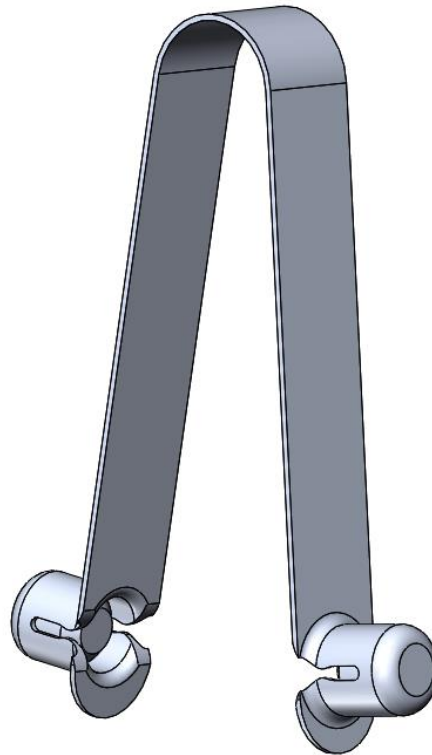
*50PC per Reinforced Cardboard Box

Product Code	Description	Weight		Packing	
		Lbs	Kg	Stillage	Quantity
WCP-33	7" W-Style Coupling Pin	0.6	0.3	Basket	1500*

SPRING CLIP

Spring Clip To Secure a Coupling Pin to a Scaffold Frame Leg.

Finish: Electroplated

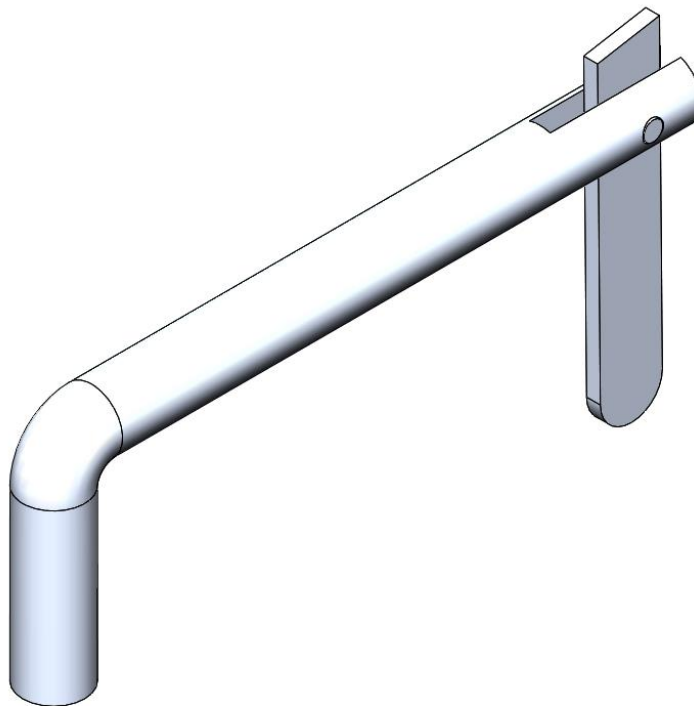


Product Code	Description	Weight		Packing	
		Lbs	Kg	Stillage	Quantity
SCCP	Ø9.5 Spring Clip	0.04	0.02	Basket	500

TOGGLE PIN

Toggle Pins are used to lock scaffolding pieces together for increased Safety.

Finish: Electroplated

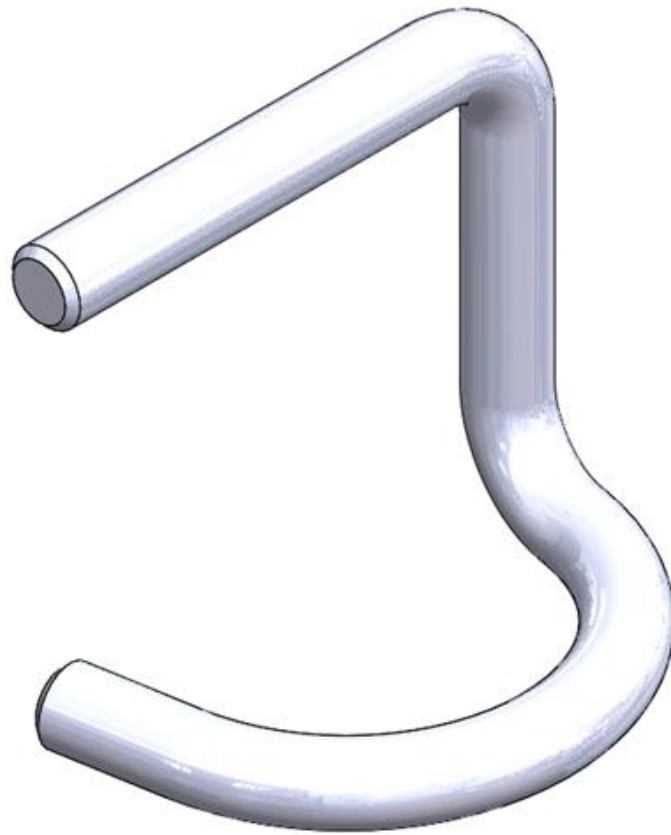


Product Code	Description	Weight		Packing	
		Lbs	Kg	Stillage	Quantity
TP-09	Toggle Pin	0.13	0.06	Basket	500

PIG TAIL CLIP

Pig Tail Pins are used to lock scaffolding pieces together for increased safety.

Finish: Electroplated



Product Code	Description	Weight		Packing	
		Lbs	Kg	Stillage	Quantity
PTC-9-43	Pig Tail Clip	0.22	0.10	Basket	500

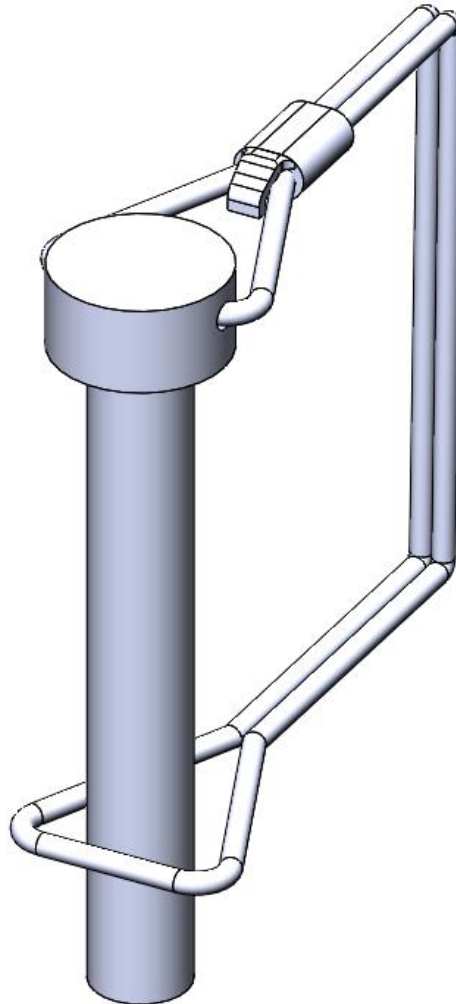
Product Identification
ACCESS FRAME SYSTEM



SPAN PIN

Span Pin for Use in Securing Wheels or Next Set of Scaffold Up.

Finish: Electroplated

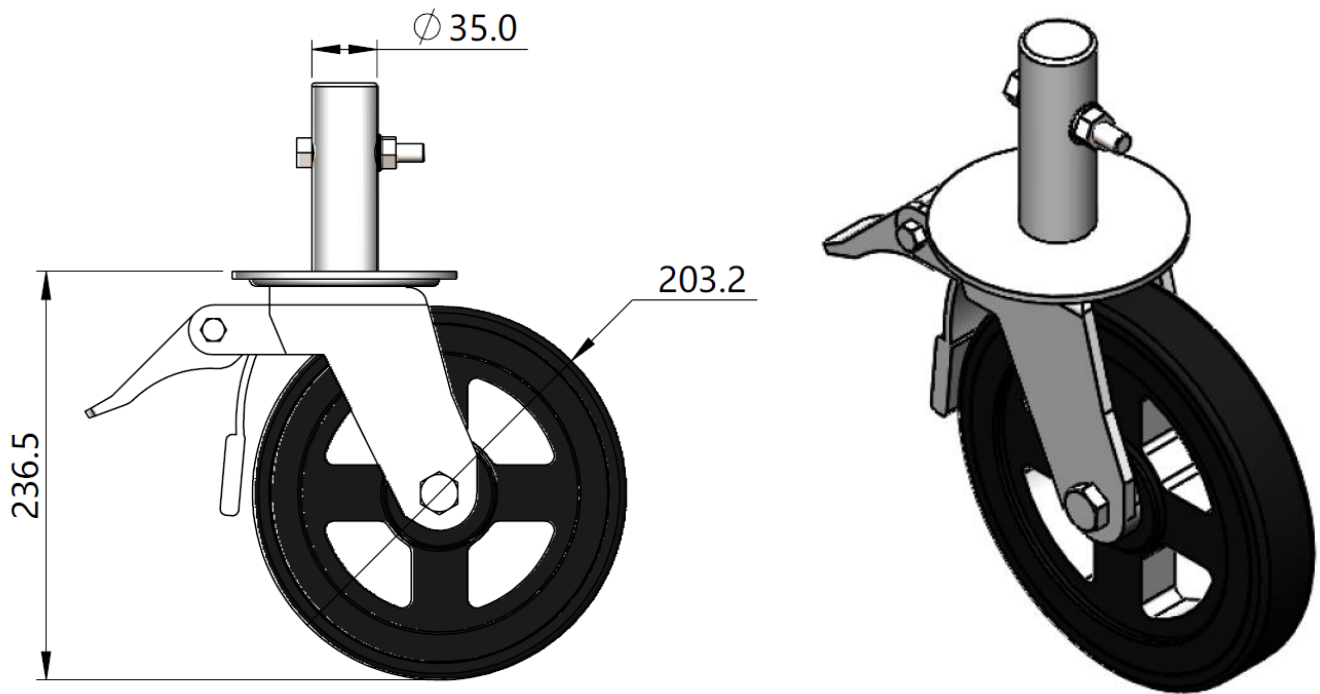


Product Code	Description	Weight		Packing	
		Lbs	Kg	Stillage	Quantity
SP-9-43	Span Pin	0.13	0.06	Basket	500

[Go To Index Page...](#)

8" SWIVEL CASTER

The scaffold caster is used as a rolling base. It allows the scaffold to be moved to different locations without disassembling the Scaffold.



*4PC per Reinforced Cardboard Box

Product Code	Description	Weight		Packing	
		Lbs	Kg	Stillage	Quantity
CSU8	8" Swivel Caster	12.32	5.60	Basket	100*

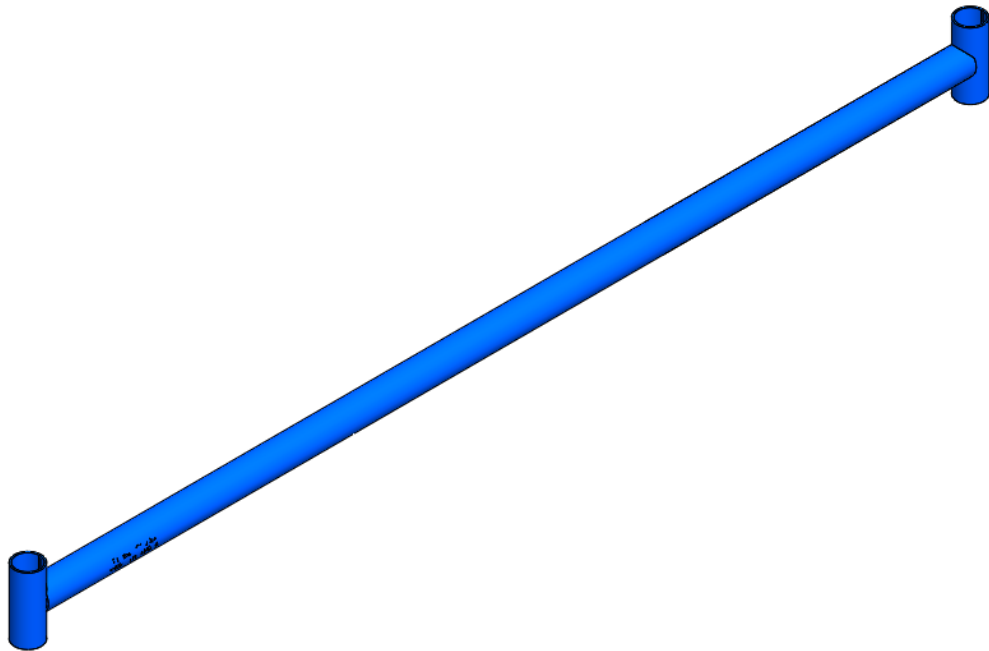
Product Identification
ACCESS FRAME SYSTEM



5' STARTER BAR

5' stairway unit starter bar use to start the access frame tower fitting.

Finish: Powder coated



Product Code	Description	Weight		Packing	
		Lbs	Kg	Stillage	Quantity
SUSB-5	5' Starter Bar	9.1	4.1	Rack	100

[Go To Index Page...](#)

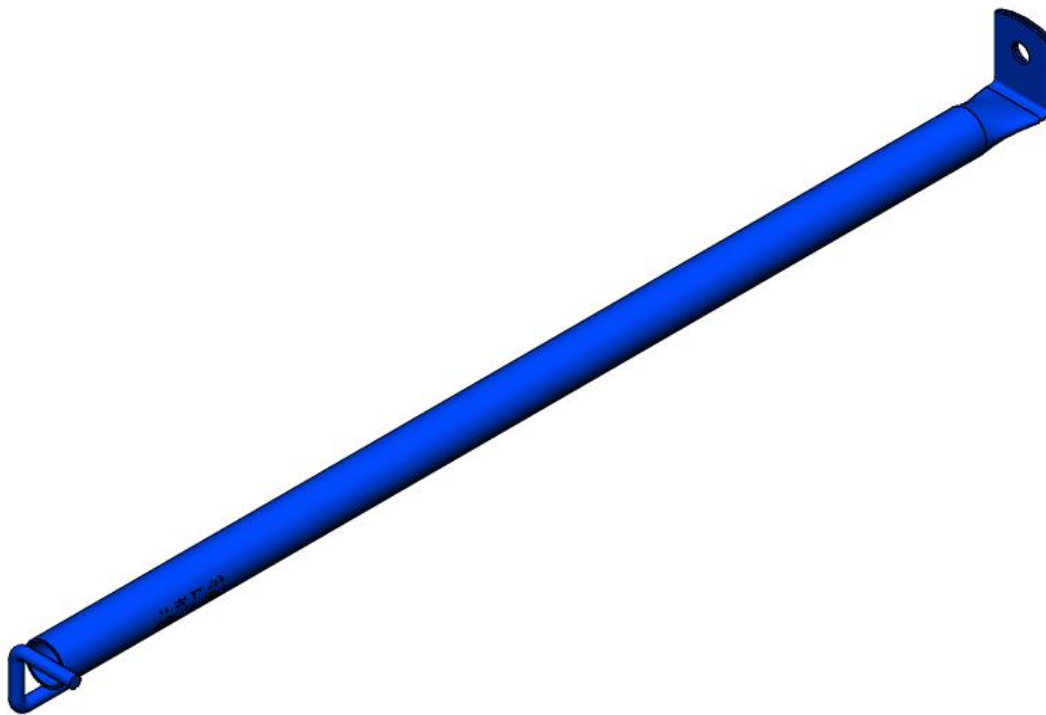
Product Identification
ACCESS FRAME SYSTEM



42" UNIVERSAL WALL TIE

The purpose of ties is to restrain the scaffolding standards in a vertical Position.

Finish: Powder coated



Product Code	Description	Weight		Packing	
		Lbs	Kg	Stillage	Quantity
UWT-42	42" Universal Wall Tie	6.3	2.9	Rack	250

[Go To Index Page...](#)

26”H X 28”W OUTRIGGER BRACKET

Outrigger bracket is clamps to the bottom of a scaffold tower or system to increase the base width, in order to increase the Stability of the tower.

Finish: Powder coated



HEAVY DUTY COUPLER (EYE-BOLT)
 TECHNOCFART Recommends
 Tightening Torque
 45-60 ft. Lbs (60-80 Nm)
 Flange Nut Size: 22.0 mm

Product Code	Description	Weight		Packing	
		Lbs	Kg	Stillage	Quantity
RTOB-28-00	Outrigger Bracket 26" H X 28" W	20.39	9.27		

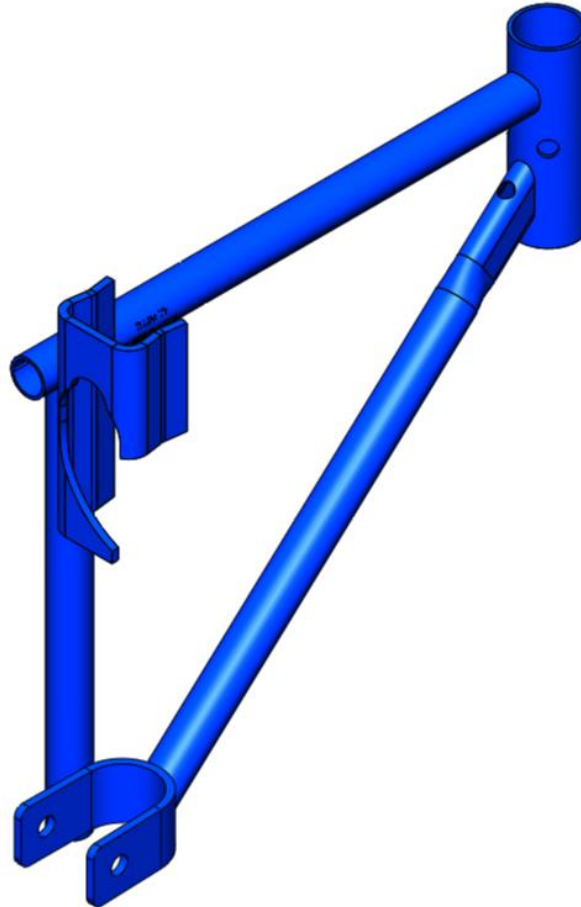
Product Identification
ACCESS FRAME SYSTEM



12" SIDE BRACKET

12" side bracket use to provide a work platform on the frame system. This bracket will hold one scaffold boards.

Finish: Powder coated



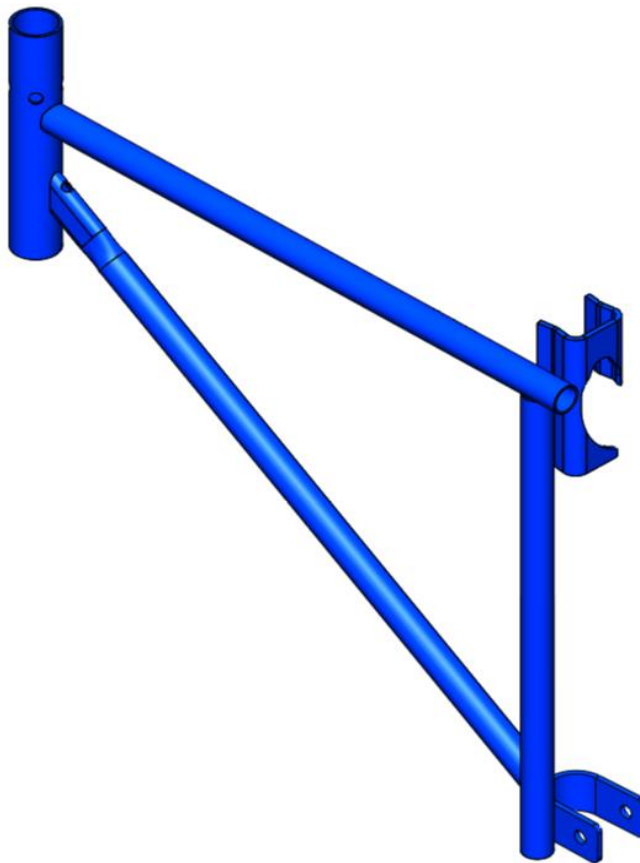
Product Code	Description	Weight		Packing	
		Lbs	Kg	Stillage	Quantity
SB-12S	12" Side Bracket	4.97	2.26	Rack	100

[Go To Index Page...](#)

21" SIDE BRACKET

21" side bracket use to provide a work platform on the frame system. This bracket will hold two scaffold boards.

Finish: Powder coated

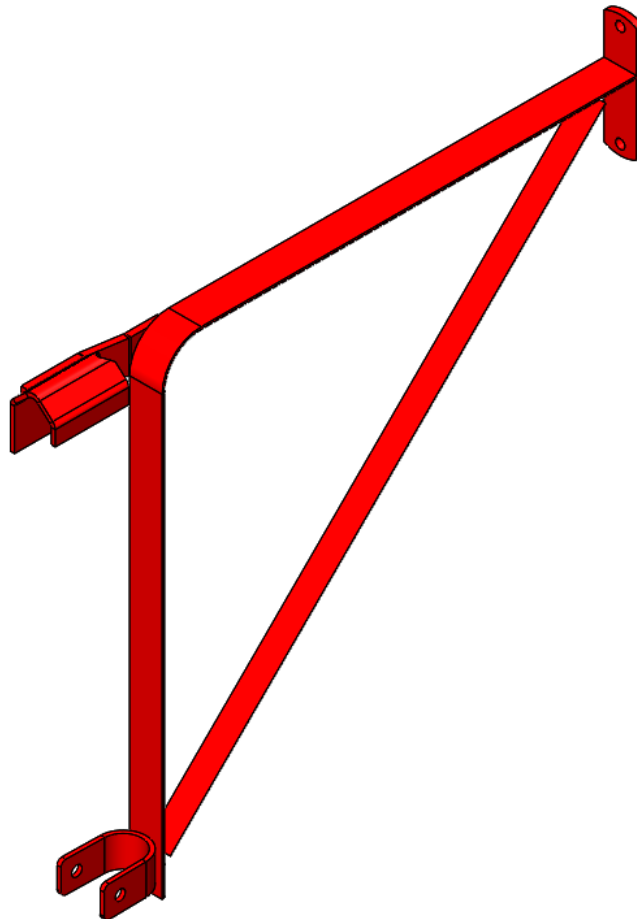


Product Code	Description	Weight		Packing	
		Lbs	Kg	Stillage	Quantity
SB-21S	21" Side Bracket	7.26	3.30	Rack	65

23" SIDE BRACKET (ANGLE)

23" side bracket use to provide a work platform on the frame system. This side bracket is made from angle. This bracket will hold two scaffold boards.

Finish: Powder coated



Product Code	Description	Weight		Packing	
		Lbs	Kg	Stillage	Quantity
ASB-23	23" Side Bracket (Angle)	13.55	6.16		

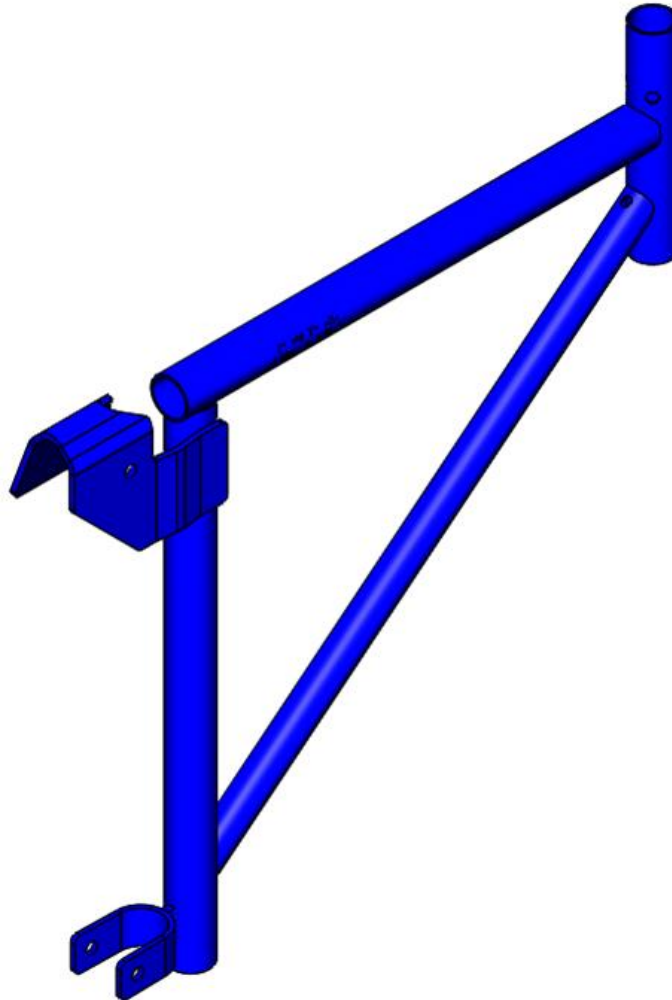
Product Identification
ACCESS FRAME SYSTEM



21" SADDLE SIDE BRACKET (TUBE)

Use this side bracket to make your scaffolding platform larger or to create an additional work platform at a different level this bracket will hold two scaffold boards.

Finish: Powder coated



Product Code	Description	Weight		Packing	
		Lbs	Kg	Stillage	Quantity
STSB-21S	21" Saddle Side Bracket (Tube)	12.10	5.50	Rack	65

[Go To Index Page...](#)

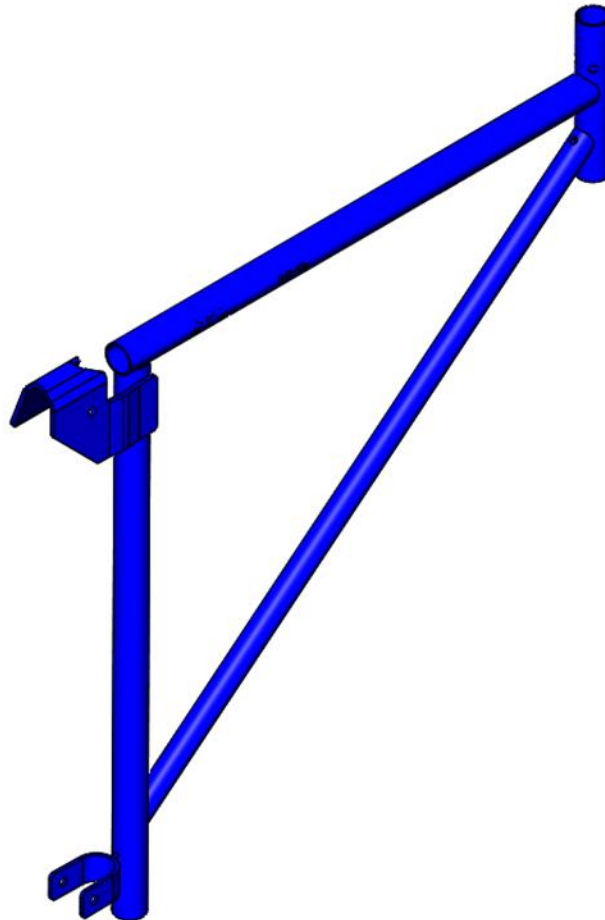
Product Identification
ACCESS FRAME SYSTEM



30" SADDLE SIDE BRACKET (TUBE)

Use this side bracket to make your scaffolding platform larger or to create an additional work platform at a different level this bracket will hold three scaffold boards.

Finish: Powder coated



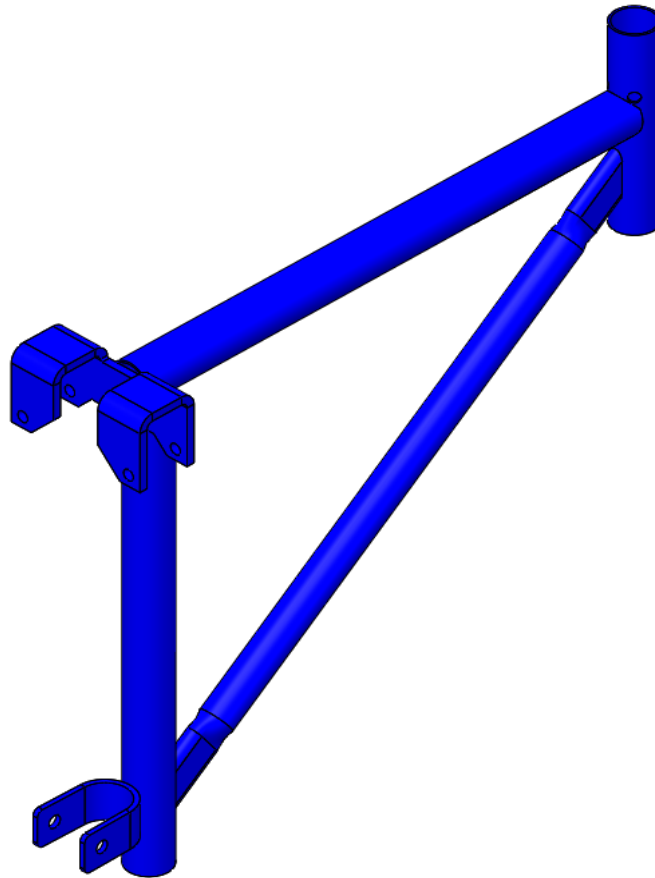
Product Code	Description	Weight		Packing	
		Lbs	Kg	Stillage	Quantity
STSB-30S	30" Saddle Side Bracket (Tube)	15.84	7.20	Rack	65

[Go To Index Page...](#)

21" END BRACKET (TUBE)

End brackets are attached to the ends of a scaffolding platform to create a working platform that is perpendicular (90 degrees) to the platform created by the frames and side brackets. They are normally Used to turn a corner with the scaffolding.

Finish: Powder coated



Product Code	Description	Weight		Packing	
		Lbs	Kg	Stillage	Quantity
EB-21	21" End Bracket	11.00	5.00	Rack	65

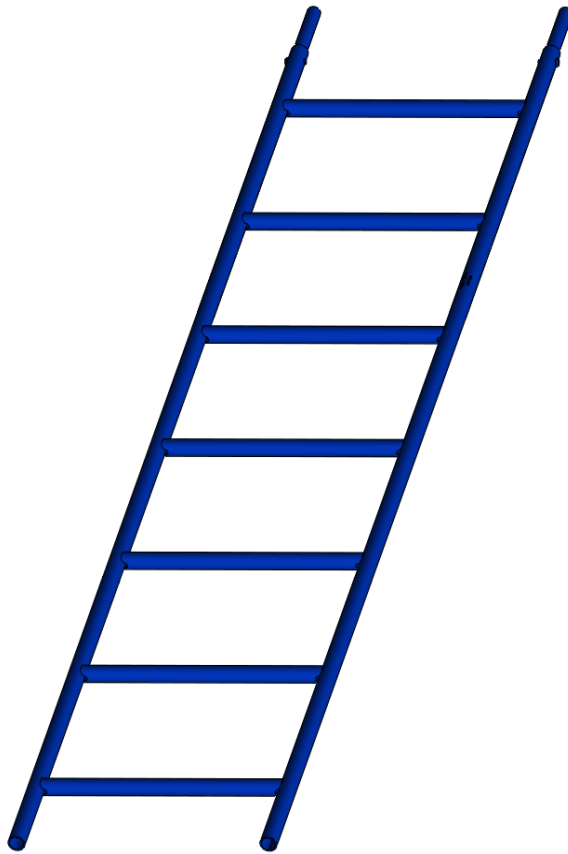
Product Identification
ACCESS FRAME SYSTEM



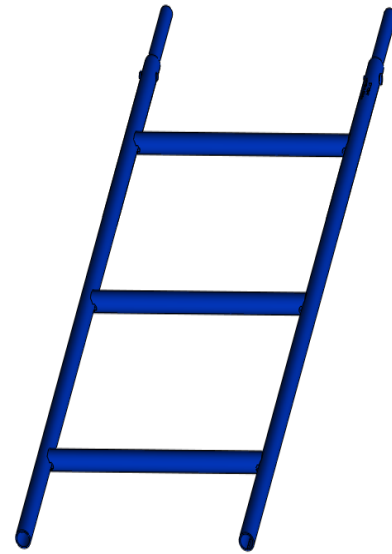
15"W ACCESS STEEL LADDERS

Access ladders are used for climbing on erected scaffold.

Finish: Powder coated



6'5" LADDER



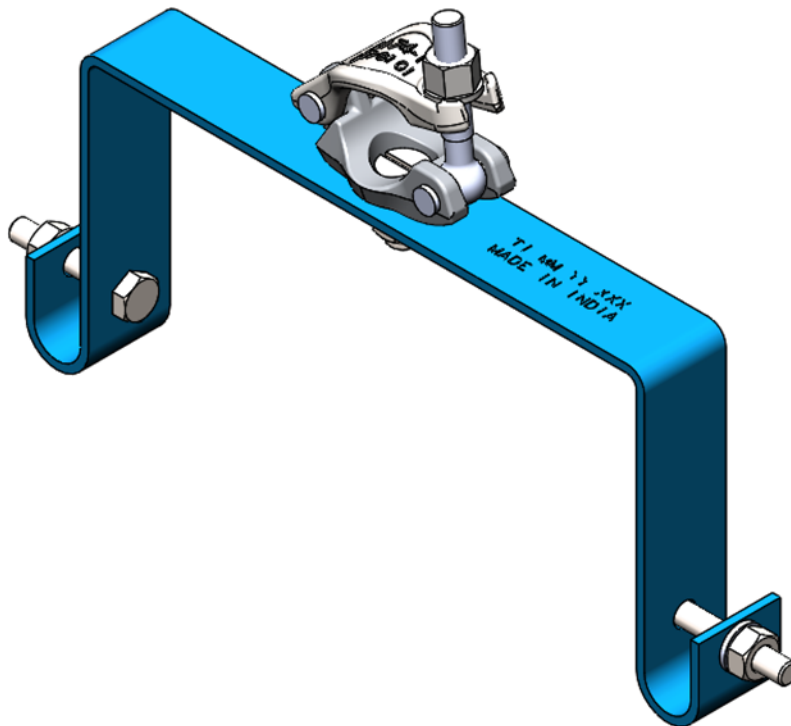
3'8" LADDER

Product Code	Description	Weight		Packing	
		Lbs	Kg	Stillage	Quantity
LF65H-W15	6'5" Access Ladder	18.61	8.46	Rack	50
LF38H-W15	3'8" Access Ladder	11.55	5.25	Rack	50

15"W LADDER BRACKET

Ladder brackets are used for holding the ladder in vertical direction by supporting with vertical pipe.

Finish: Powder coated



HEAVY DUTY COUPLER (EYE-BOLT)
 TECHNOCRAFT Recommends
 Tightening Torque
 45-60 ft. Lbs (60-80 Nm)
 Flange Nut Size: 22.0 mm

Product Code	Description	Weight		Packing	
		Lbs	Kg	Stillage	Quantity
LB-15-7	15" Ladder Bracket	6.07	2.76	Rack	150

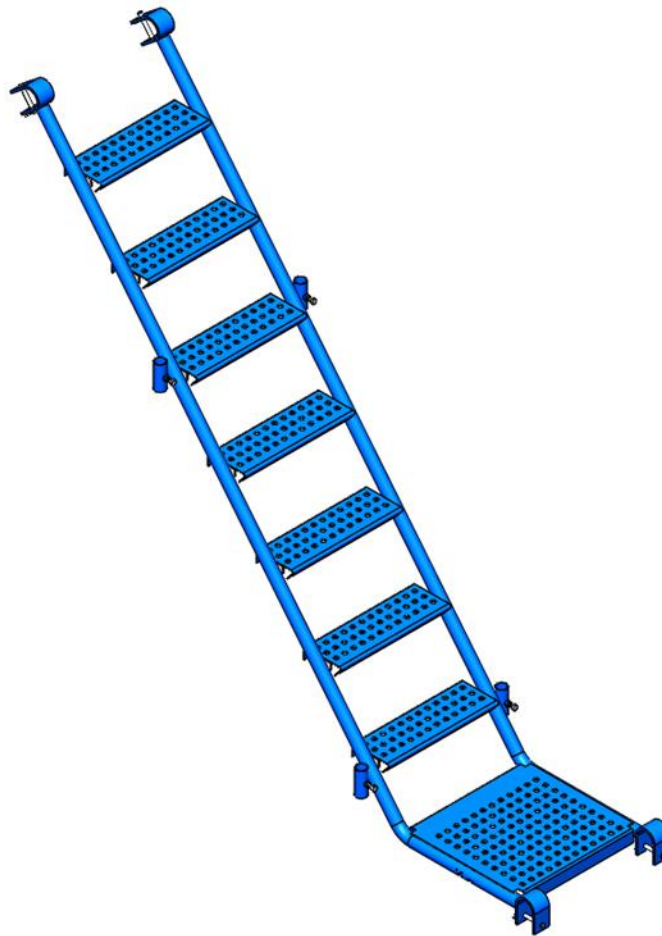
Product Identification
ACCESS FRAME SYSTEM



7'W X 6'4" STAIR UNIT

Stair units are used in Stair case tower where person can safely reach at required level.

Finish: Powder coated



Product Code	Description	Weight		Packing	
		Lbs	Kg	Stillage	Quantity
SCU70-64	Stair Case For Access Frame	117.6	53.5		

[Go To Index Page...](#)

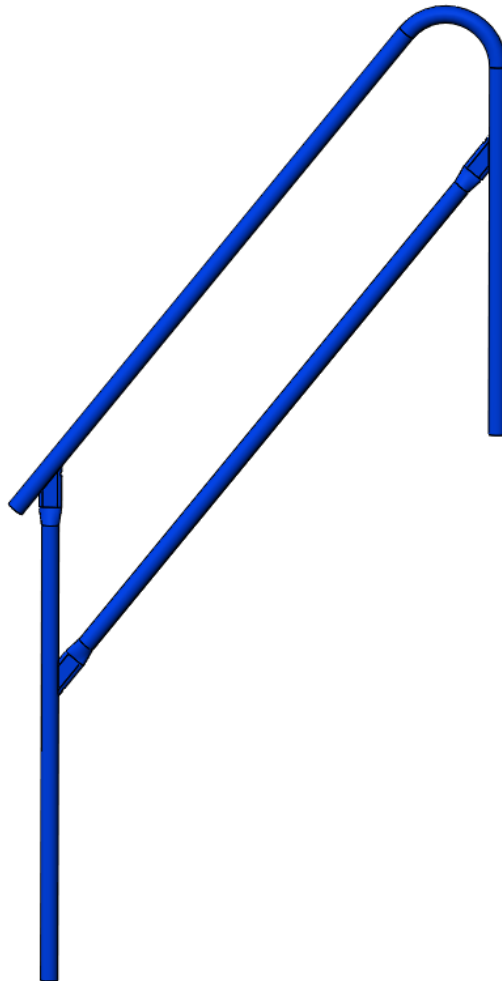
Product Identification
ACCESS FRAME SYSTEM



INTERNAL HANDRAIL (7'W X 6'4")

Handrail use for protection to Person In stair unit.

Finish: Powder coated



Product Code	Description	Weight		Packing	
		Lbs	Kg	Stillage	Quantity
IHR 70-64	Inside Hand Rail	16.5	7.5		

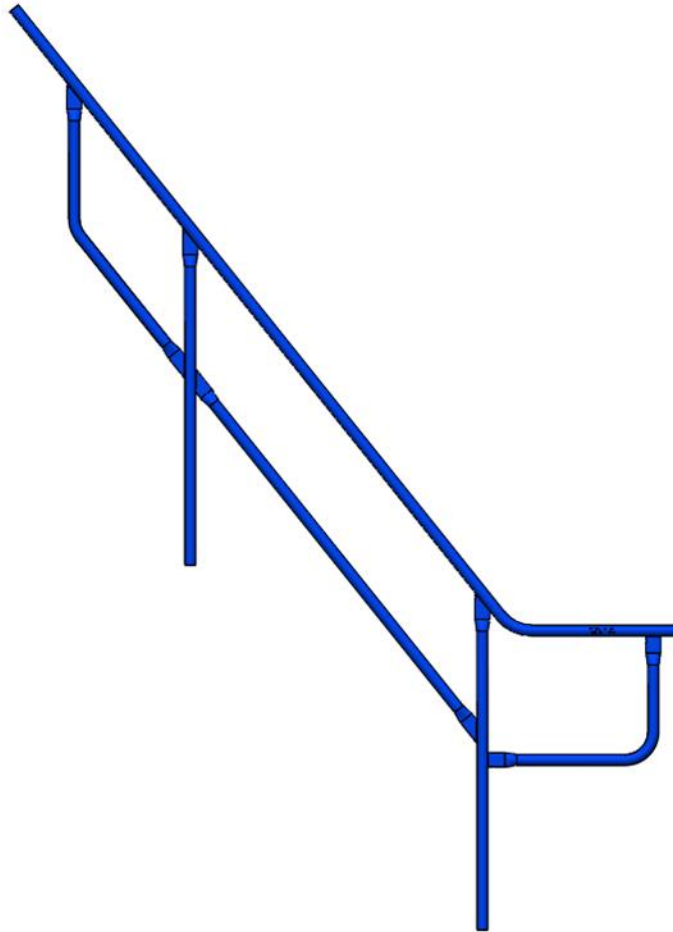
Product Identification
ACCESS FRAME SYSTEM



OUTSIDE HANDRAIL (7'W X 6'4")

Handrail use for protection to Person In stair unit.

Finish: Powder coated



Product Code	Description	Weight		Packing	
		Lbs	Kg	Stillage	Quantity
OHR 70-64	Outside Hand Rail	29.6	13.4		

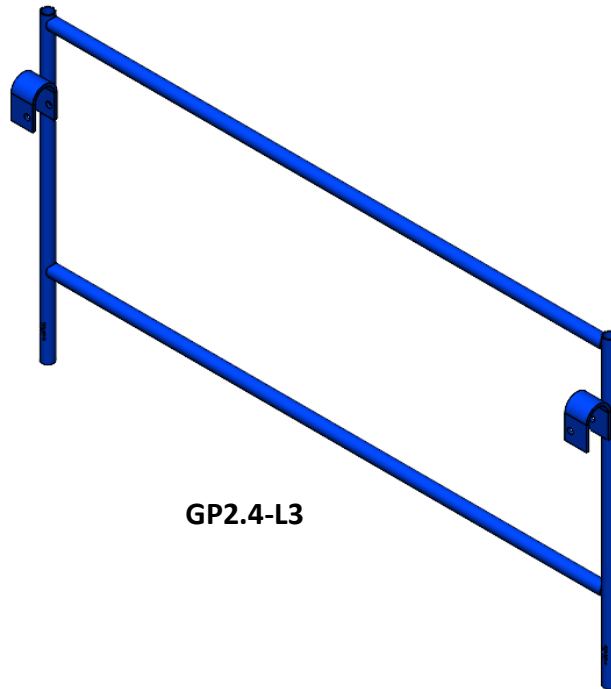
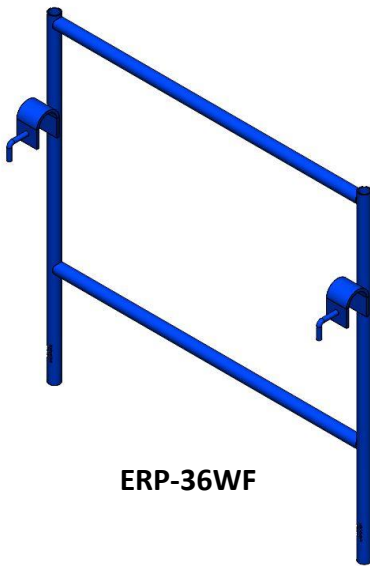
Product Identification
ACCESS FRAME SYSTEM



END RAIL PANEL

End rail panel use for protection to Person on Walkthru Frame.

Finish: Powder coated



Product Code	Description	Weight		Packing	
		Lbs	Kg	Stillage	Quantity
ERP-36WF	End Rail Panel (for 3' & 3'6" Walkthru Frame)	10.6	4.8	Rack	100
GP2.4-L3	End Rail Panel (for 5' Walkthru Frame)	13.0	5.9	Rack	100

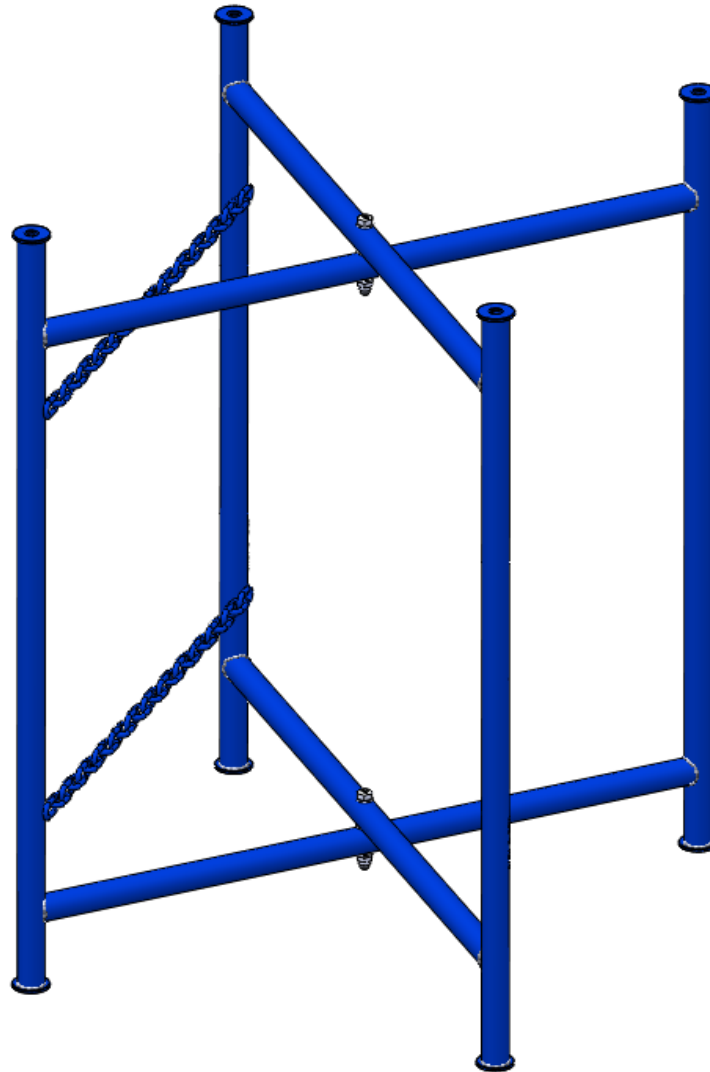
Product Identification
ACCESS FRAME SYSTEM



20" X 30" MORTAR STAND

Mortar stand used especially when working on low height.

Finish: Powder coated



Product Code	Description	Weight		Packing	
		Lbs	Kg	Stillage	Quantity
VMS-2030	20" X 30" Mortar Stand	16.1	7.3		

[Go To Index Page...](#)

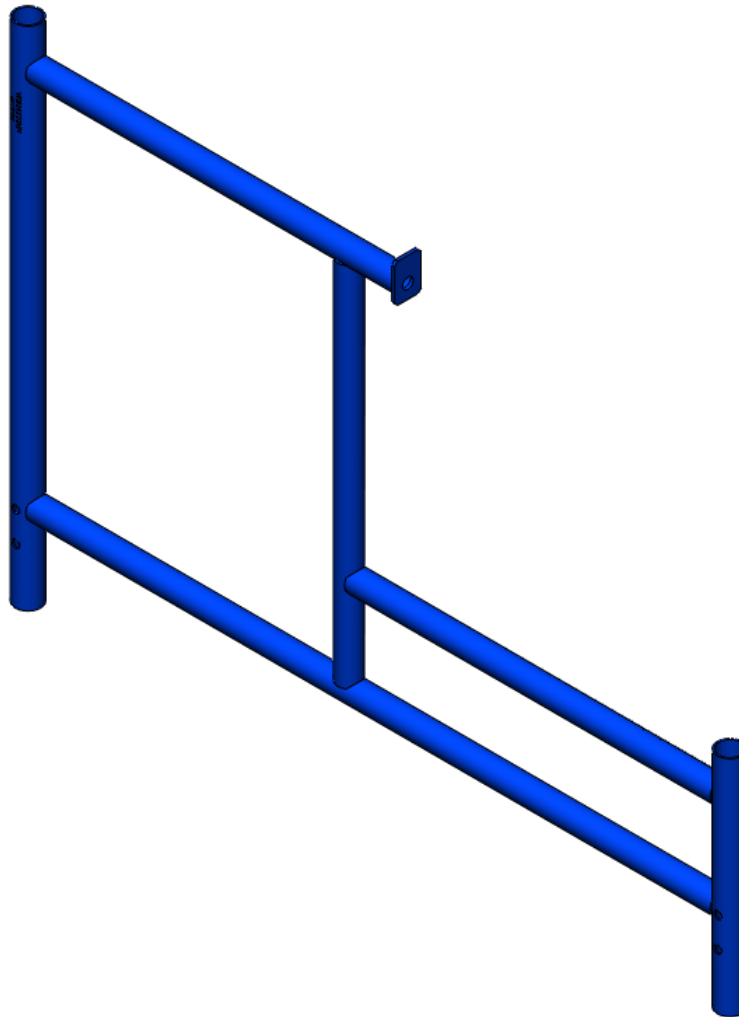
Product Identification
ACCESS FRAME SYSTEM



VENEER JACK FRAME

It is commonly used in residential construction and this frame benefit are portability and adjusting legs.

Finish: Powder coated



Product Code	Description	Weight		Packing	
		Lbs	Kg	Stillage	Quantity
VJF-45-34	Vaneer Jack Frame	21.7	9.9		

[Go To Index Page...](#)

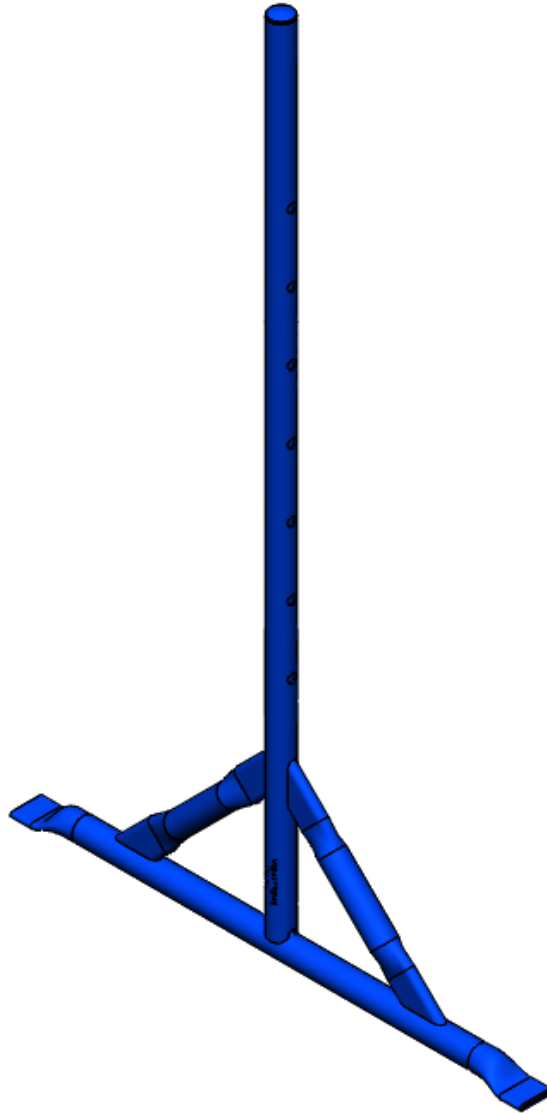
Product Identification
ACCESS FRAME SYSTEM



VENEER JACK LEG

Veneer legs is used to adjust veneer frame height.

Finish: Powder coated



Product Code	Description	Weight		Packing	
		Lbs	Kg	Stillage	Quantity
VJ-30-48	Vaneer Jack Leg	10.7	4.9		

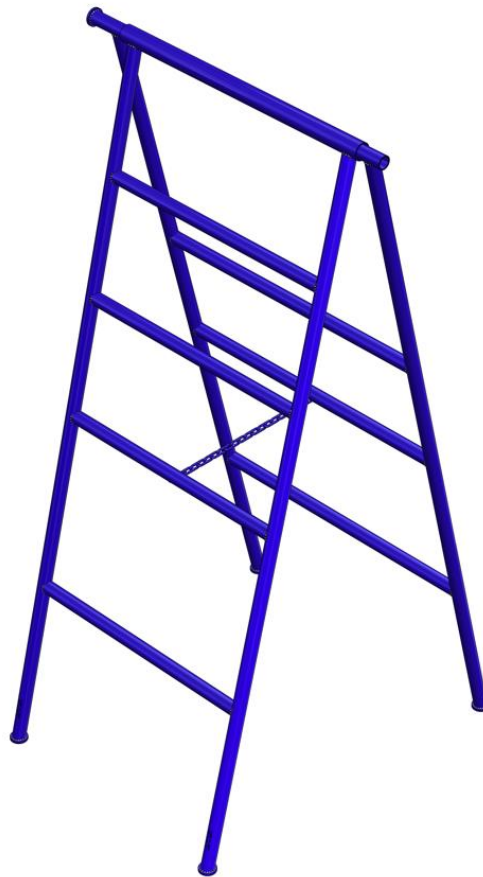
Product Identification
ACCESS FRAME SYSTEM



A-FRAME TRESTLE

A-Frame can be utilized to do the internal work of the apartments/Buildings.

Finish: Powder coated



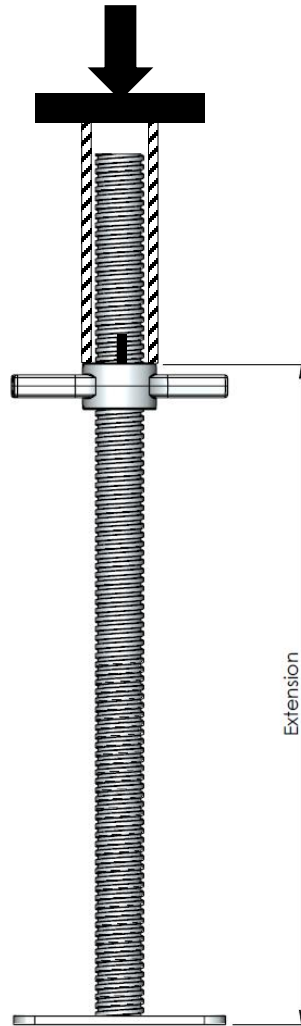
Product Code	Description	Weight		Packing	
		Lbs	Kg	Stillage	Quantity
AFM-3X6-00	A-Frame Trestle	51.5	23.4		

[Go To Index Page...](#)

Engineering & Loading Data

[Go To Index Page...](#)

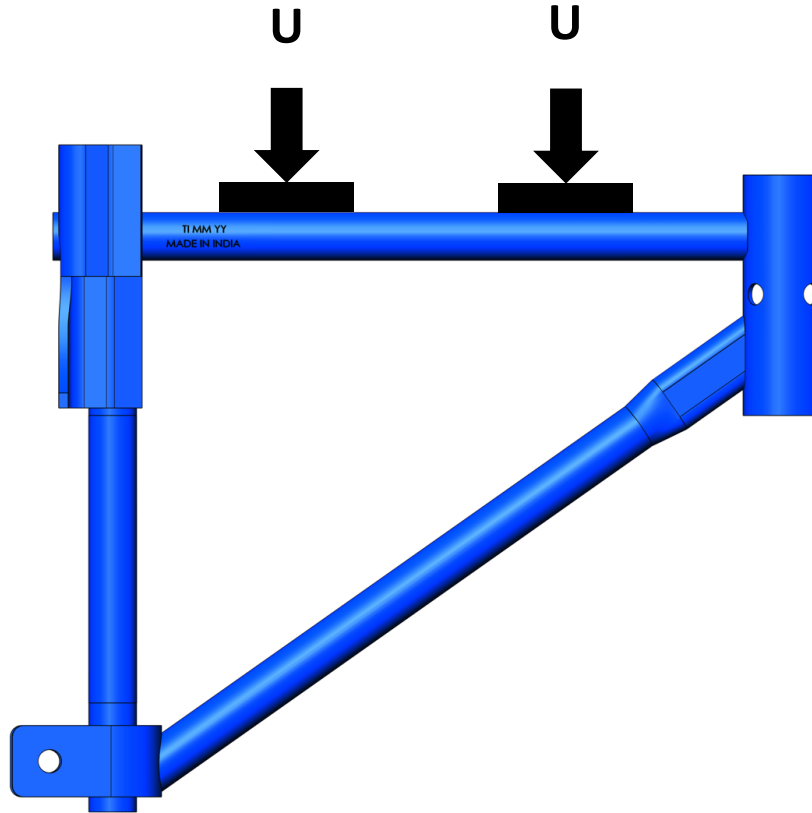
SOLID BASE JACK



Product Code	Description	Extension		Safe Work Load	
		Inch	MM	Lbs	kN
SJB34-24-DN	Solid Base Jack	6"	150.0	10000	44.5
		12"	300.0	9600	42.7
		18"	455.0	9500	42.2

FACTOR OF SAFETY- 4:1

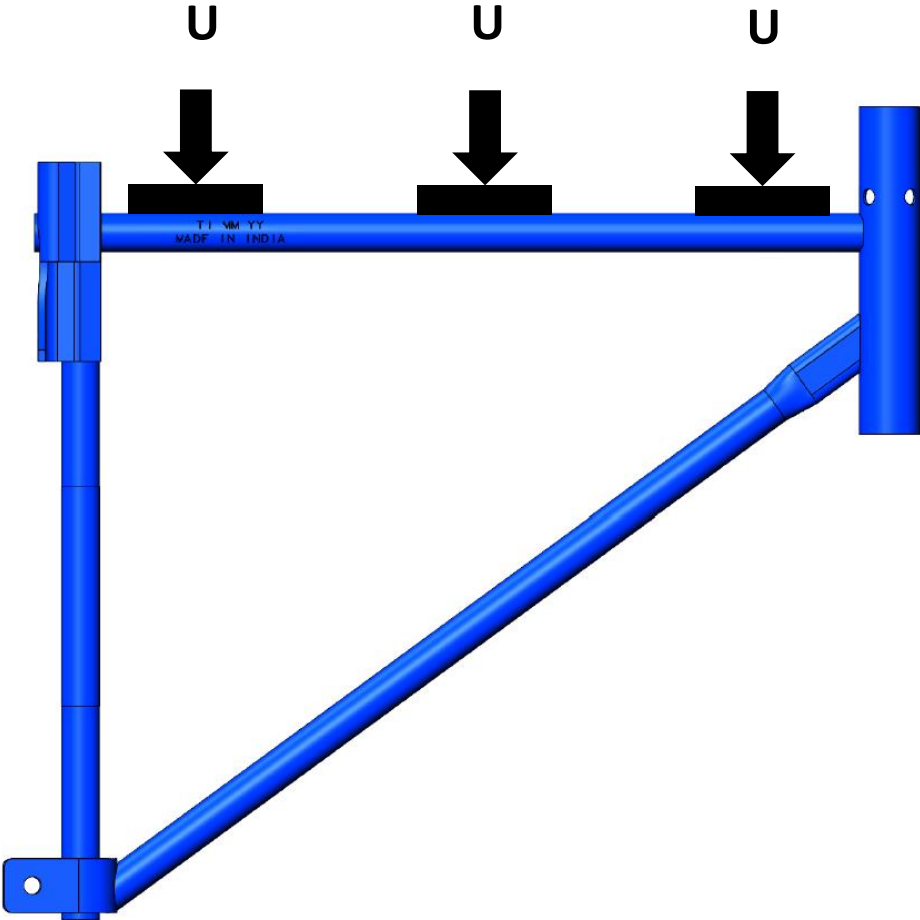
12" SIDE BRACKET



Product Code	Description	UDL Safe Work Load	
		Lbs	kN
SB-12S	12" Side Bracket	620	2.75

FACTOR OF SAFETY- 4:1

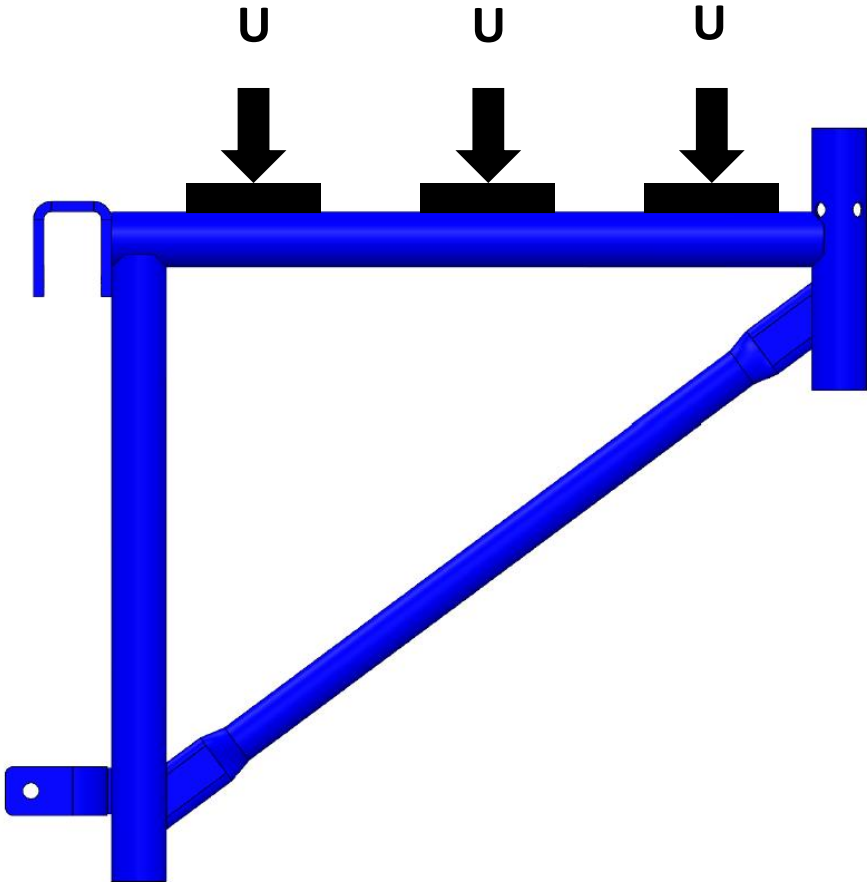
21" SIDE BRACKET



Product Code	Description	UDL Safe Work Load	
		Lbs	kN
SB-21S	21" Side Bracket	810	3.6

FACTOR OF SAFETY- 4:1

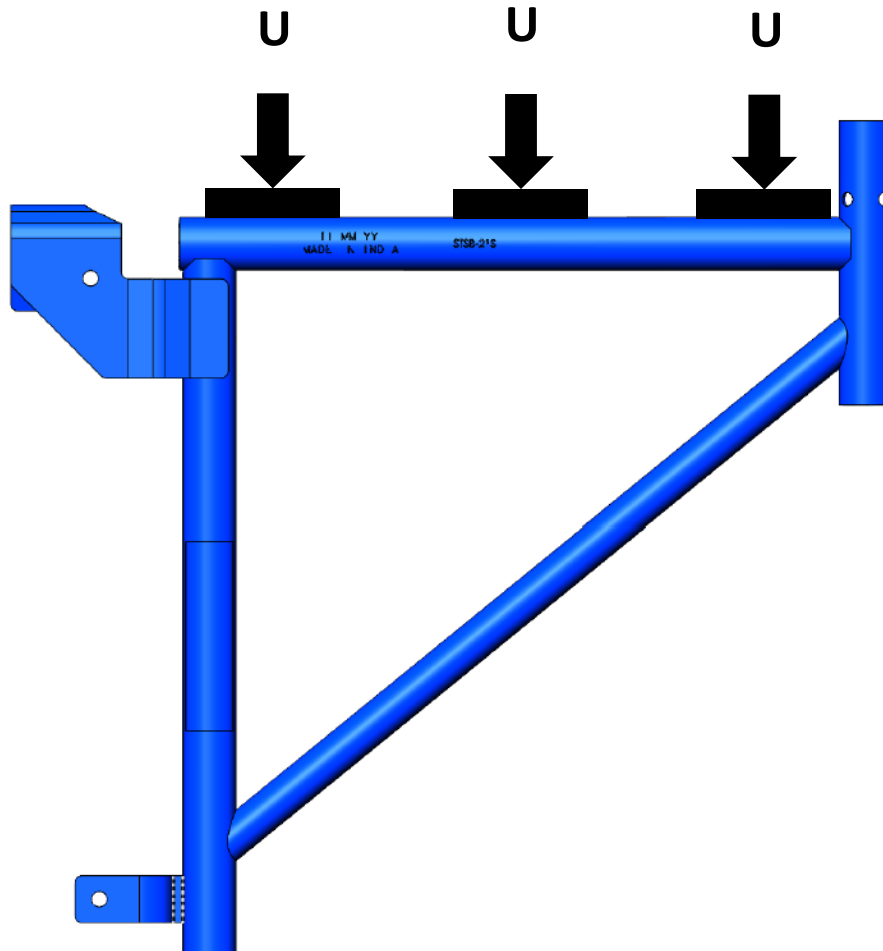
21" END BRACKET



Product Code	Description	UDL Safe Work Load	
		Lbs	kN
EB-21	21" End Bracket	582	2.58

FACTOR OF SAFETY- 4:1

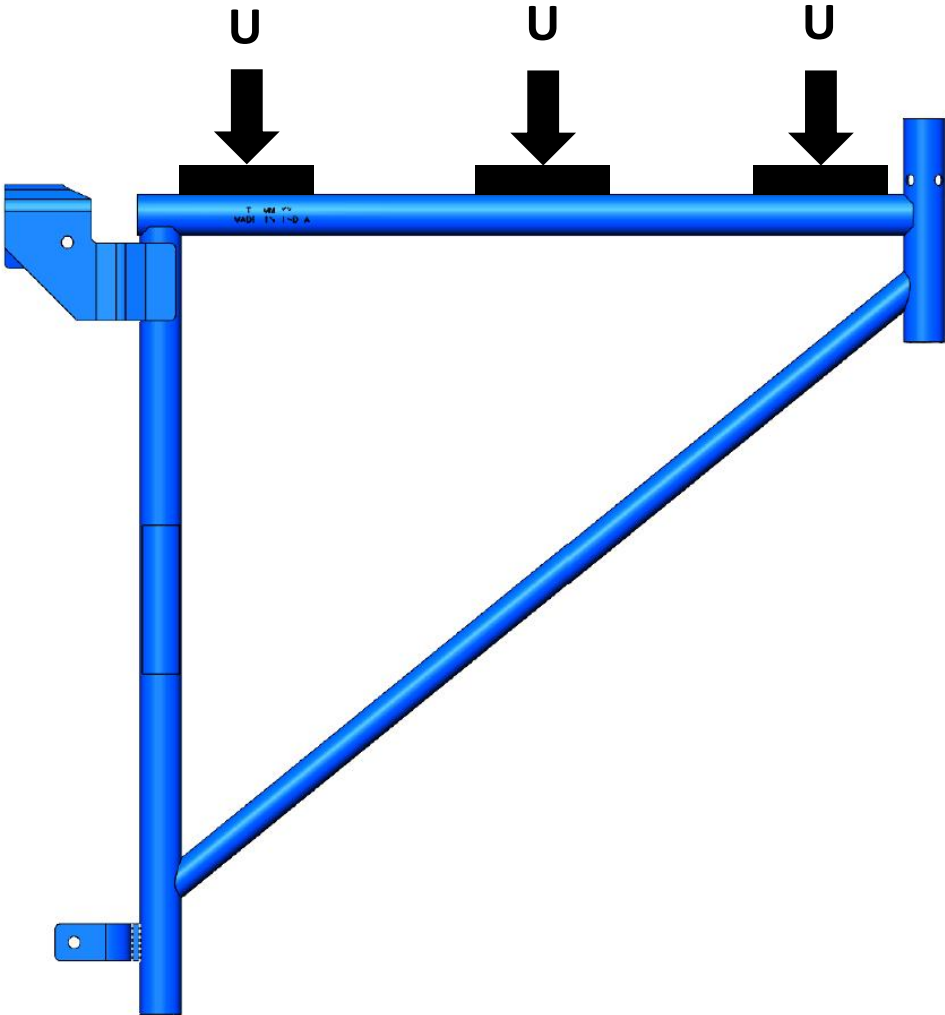
21" SADDLE SIDE BRACKET



Product Code	Description	UDL Safe Work Load	
		Lbs	kN
STSB-21S	21" Saddle Side Bracket (Tube)	1044.0	4.6

FACTOR OF SAFETY- 4:1

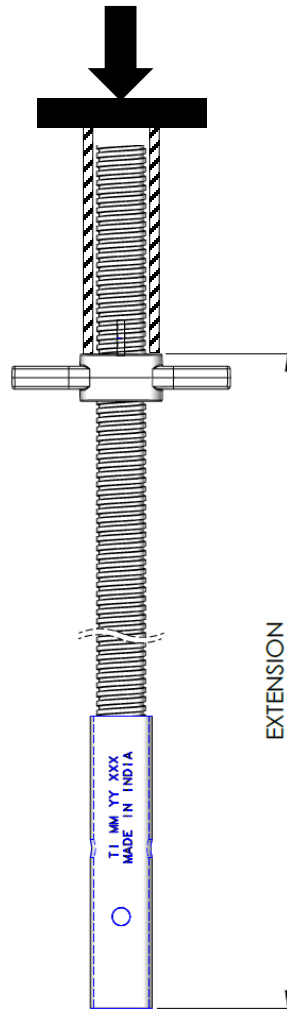
30" SADDLE SIDE BRACKET



Product Code	Description	UDL Safe Work Load	
		Lbs	kN
STSB-30S	30" Saddle Side Bracket (Tube)	1120.0	5.0

FACTOR OF SAFETY- 4:1

21" SOCKET JACK

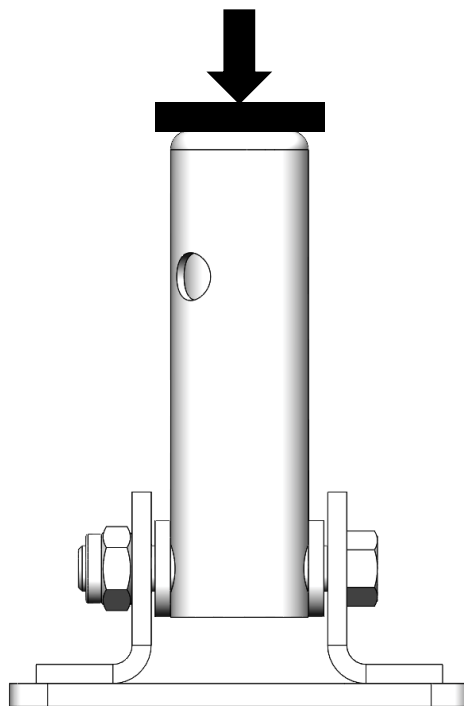


Product Code	Description	Extension		Safe Work Load	
		Inch	mm	Lbs	kN
SBJ34-SOC-DN	Solid Jack With Socket	10"	305.0	7540	33.5
		16"	405.0	7540	33.5
		21"	530.0	7035	31.3

FACTOR OF SAFETY- 4:1

[Go To Index Page...](#)

SWIVEL BASE PLATE

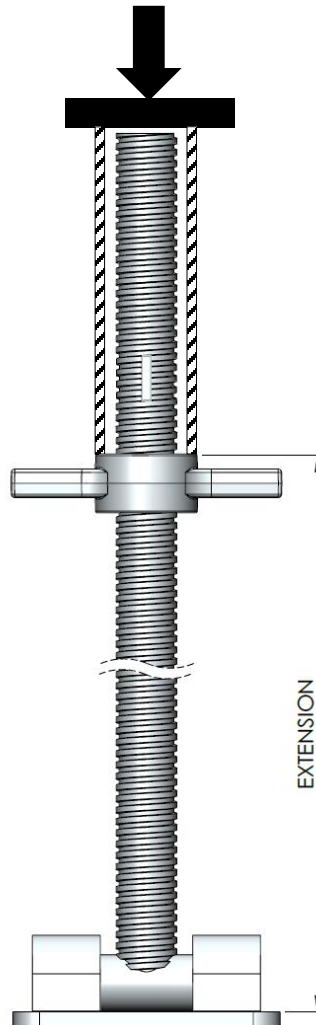


Product Code	Description	Safe Work Load	
		Lbs	kN
SBP-36-G	Swivel Base Plate	4000	17.8

FACTOR OF SAFETY- 4:1

[Go To Index Page...](#)

SWIVEL SCREW JACK (SOLID)



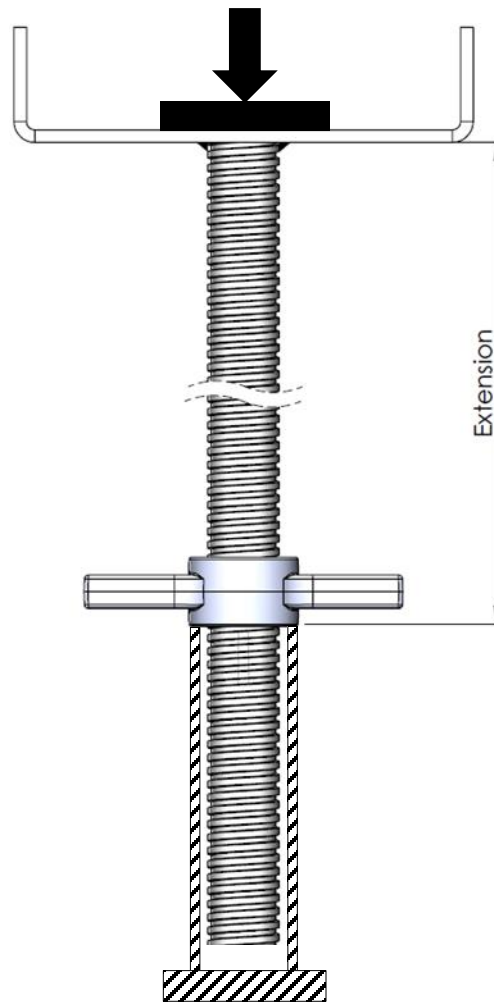
S

Product Code	Description	Extension		Safe Work Load	
		Inch	mm	Lbs	kN
SSBJ34-24-DN	Swivel Screw Jack (Solid)	6"	150.0	9300	41.4
		12"	305.0	8800	39.1
		18"	450.0	8500	37.8

FACTOR OF SAFETY- 4:1

[Go To Index Page...](#)

U HEAD JACK



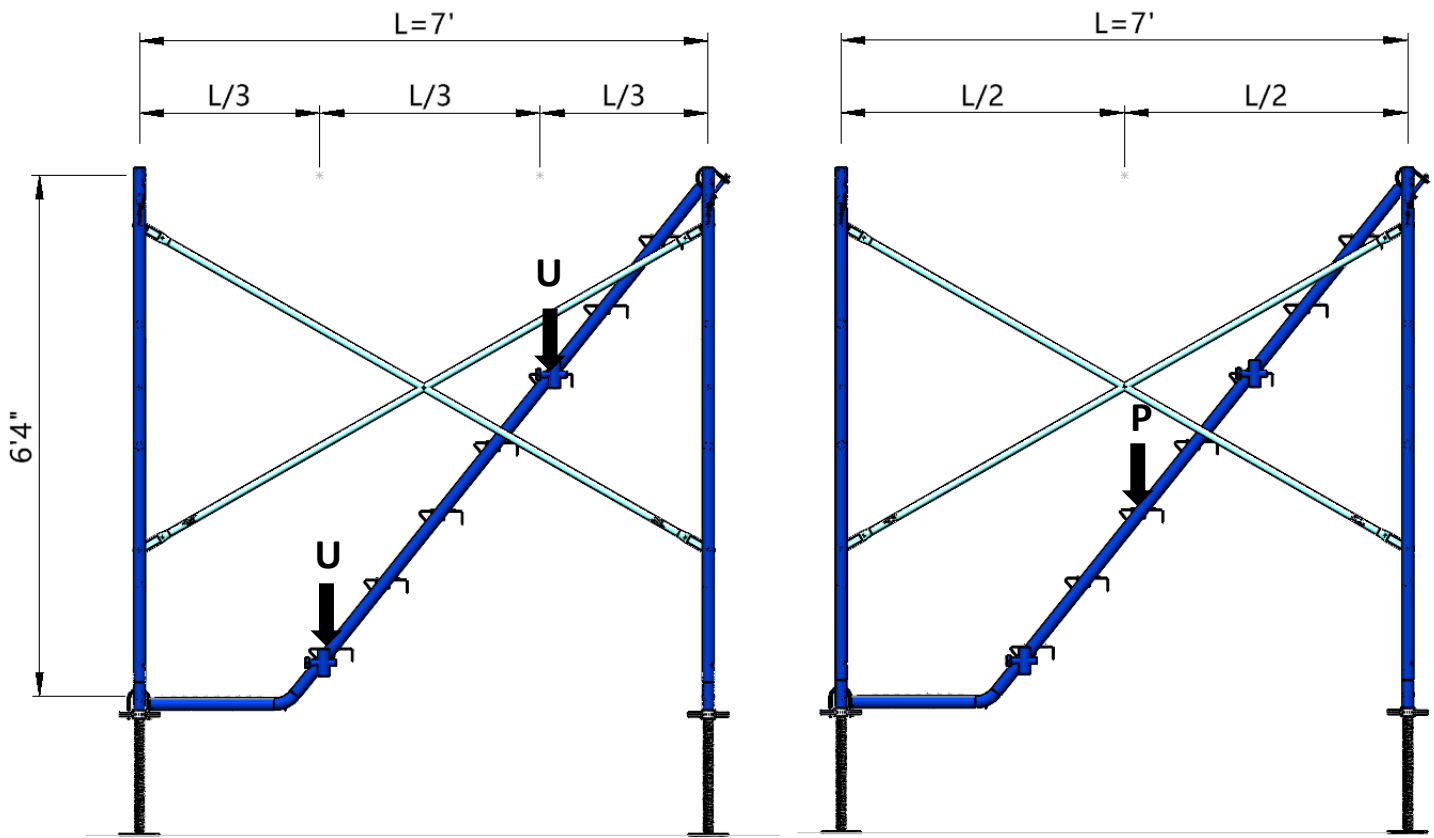
Product Code	Description	Extension		Safe Work Load	
		Inch	mm	Lbs	kN
SUH34-24-00	U Head Screw Jack	6"	150.0	10000	44.5
		12"	305.0	9800	43.6
		18"	450.0	8000	35.6

FACTOR OF SAFETY- 4:1

[Go To Index Page...](#)

STAIR UNIT

LOAD RANGE UPTO 750 Lbs Considering 3 Person Load

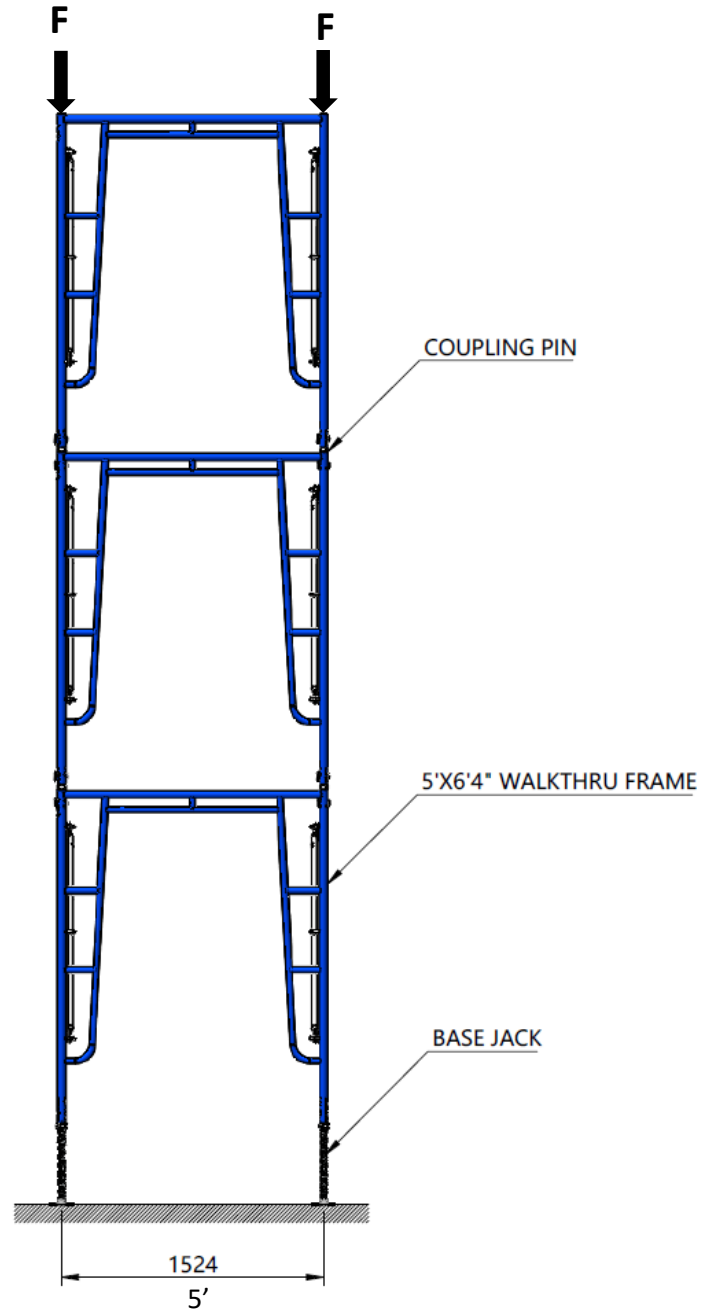
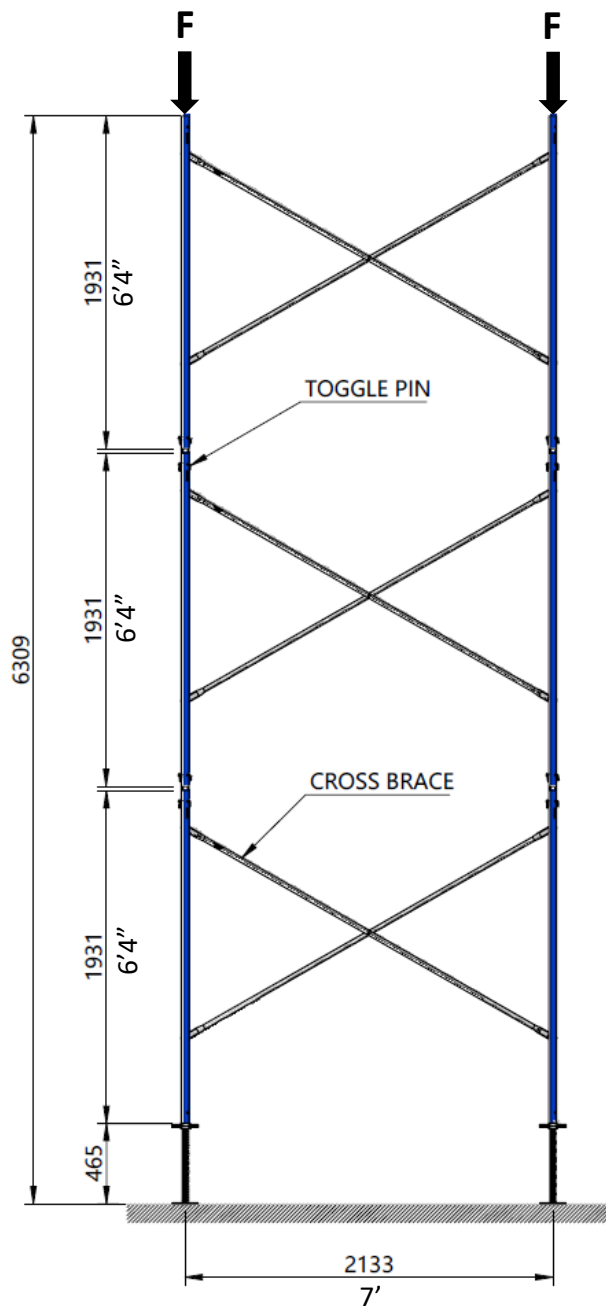


UDL TEST

POINT LOAD TEST

Product Code	Description	UDL Load		PoINT load	
		Lbs	kN	Lbs	kN
SCU70-40	Stair Unit	850	3.8	830	3.7

WALKTHRU FRAME 5'X6'4" LEG LOAD 3 TIERS

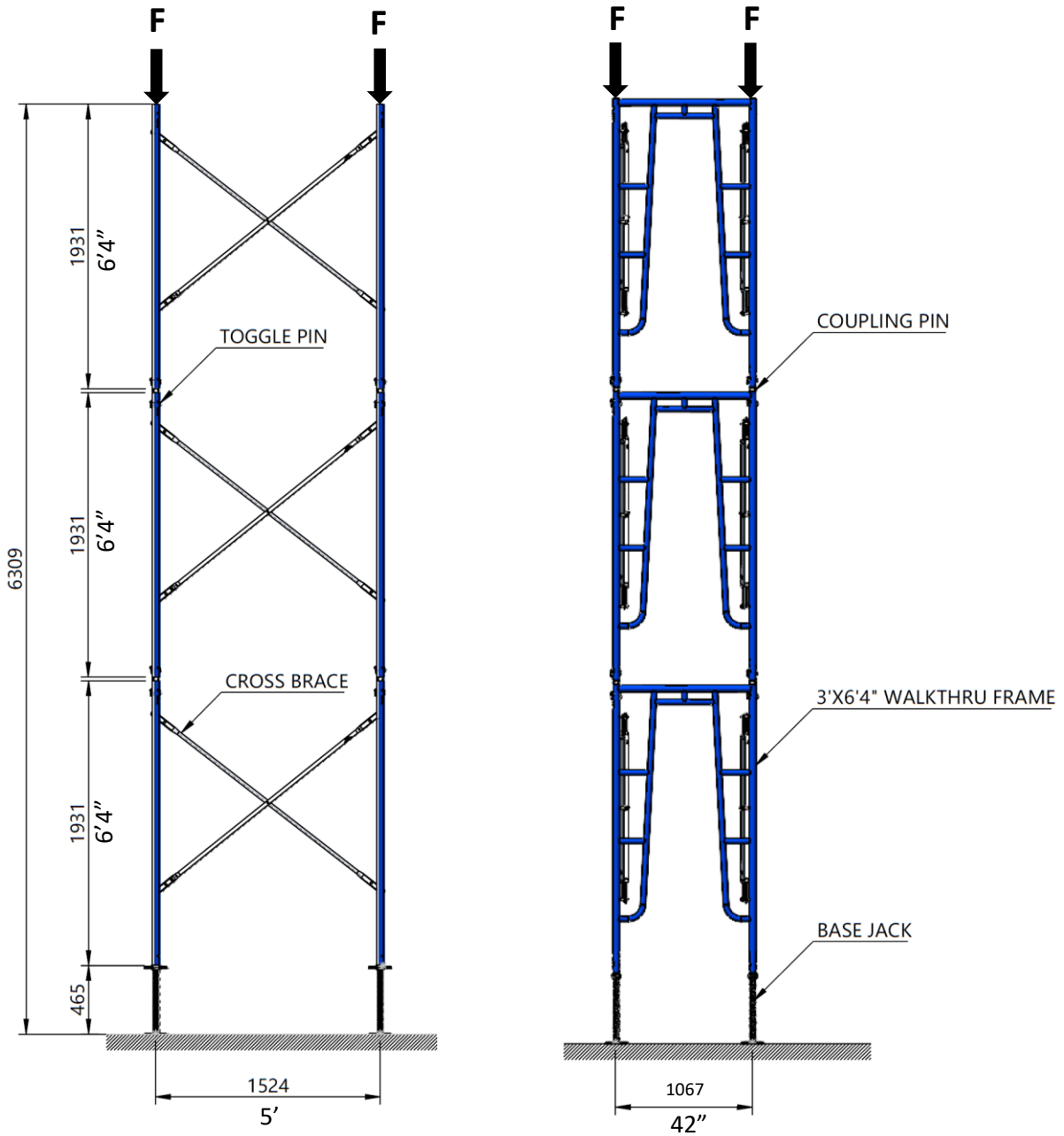


SWL for each Leg is: 3000 Lbs / Leg.

Factor of Safety: 4:1

[Go To Index Page...](#)

WALKTHRU FRAME 42"X6'4" LEG LOAD 3 TIERS

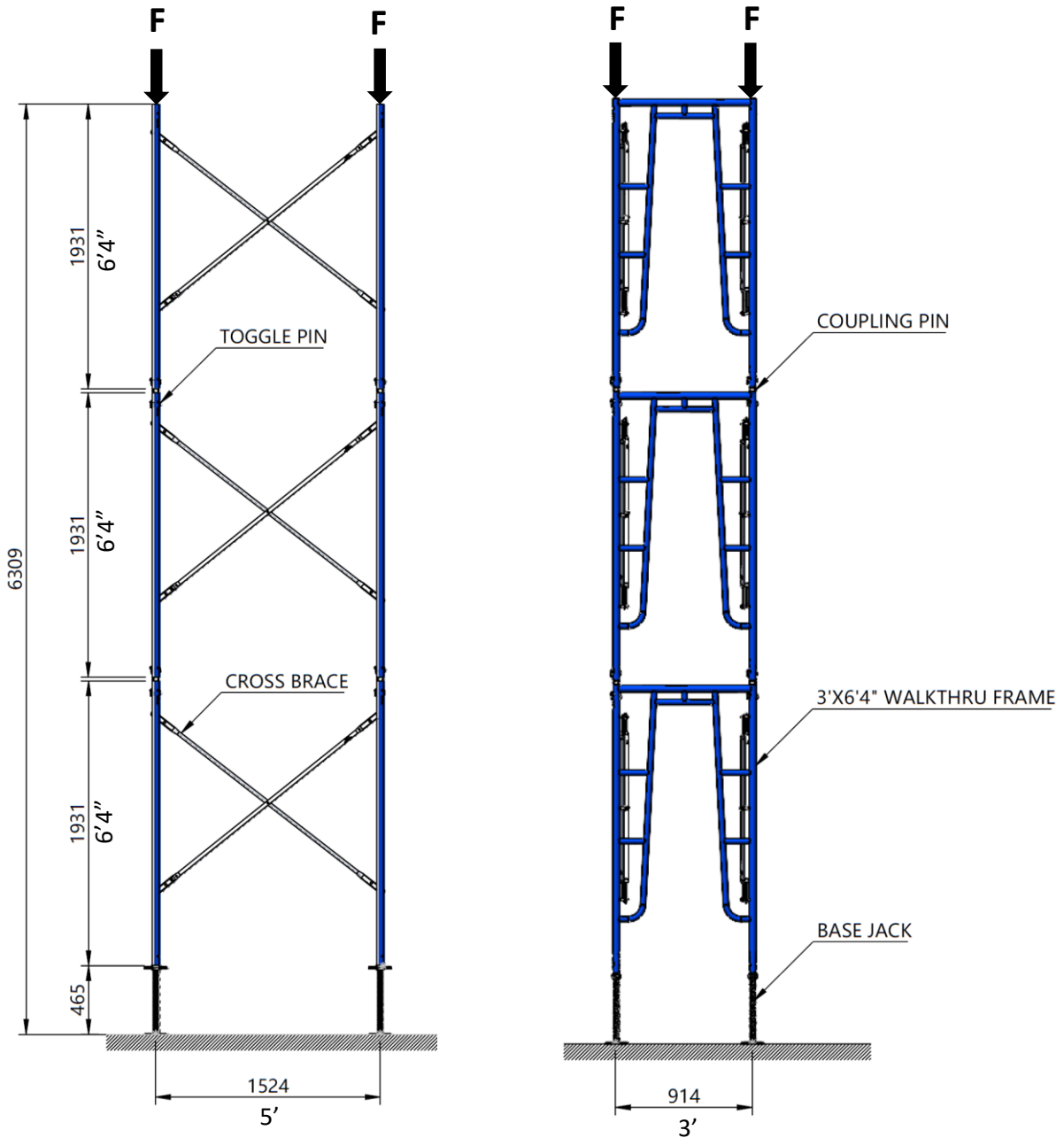


SWL for each Leg is: 3000 Lbs / Leg.

Factor of Safety: 4:1

[Go To Index Page...](#)

WALKTHRU FRAME 3'X6'4" LEG LOAD 3 TIERS

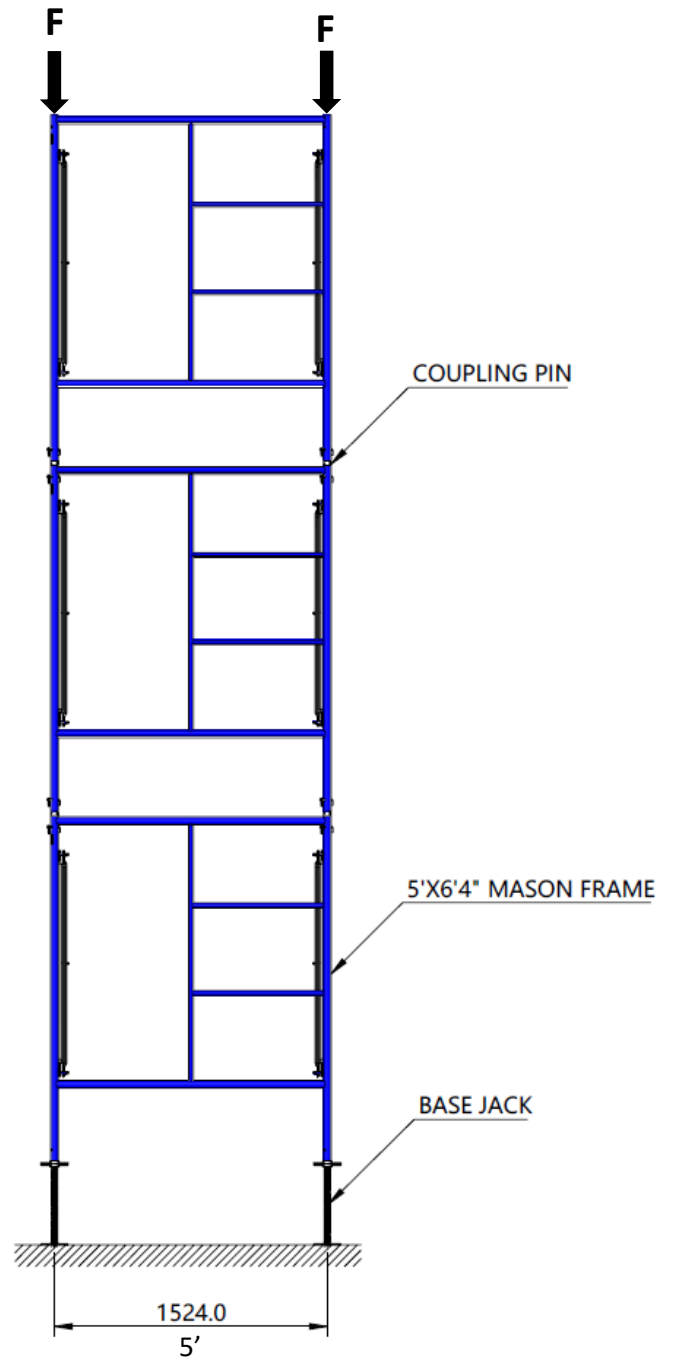
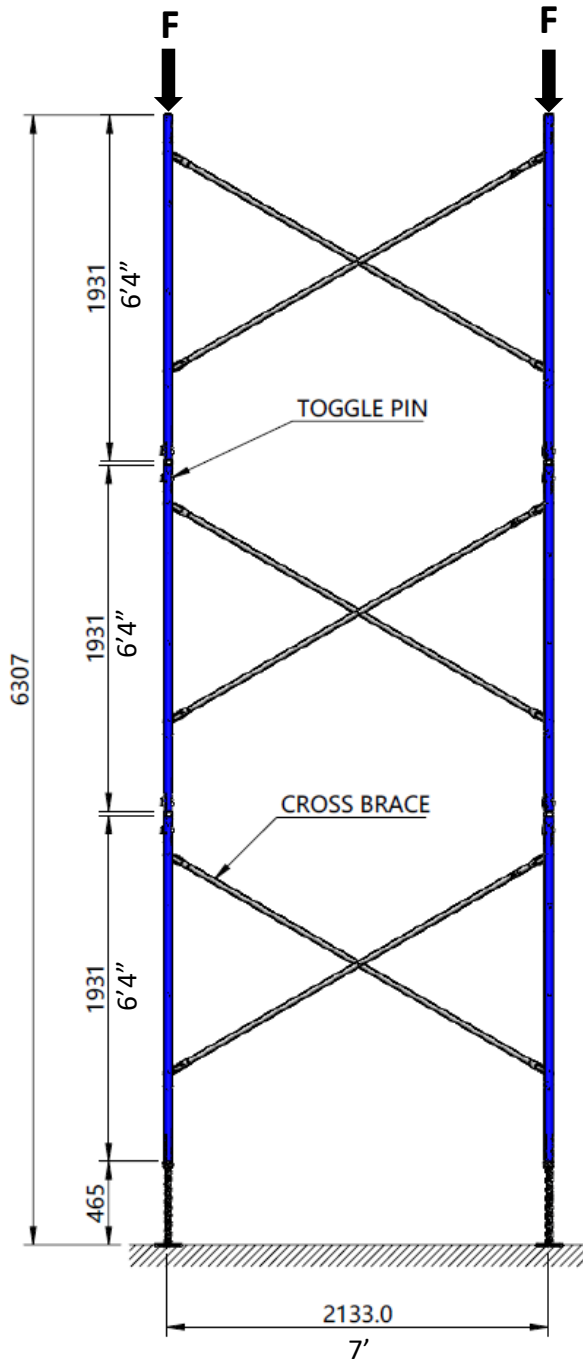


SWL for each Leg is: 3000 Lbs / Leg.

Factor of Safety: 4:1

[Go To Index Page...](#)

MASON FRAME 5'X6'4" LEG LOAD 3 TIERS

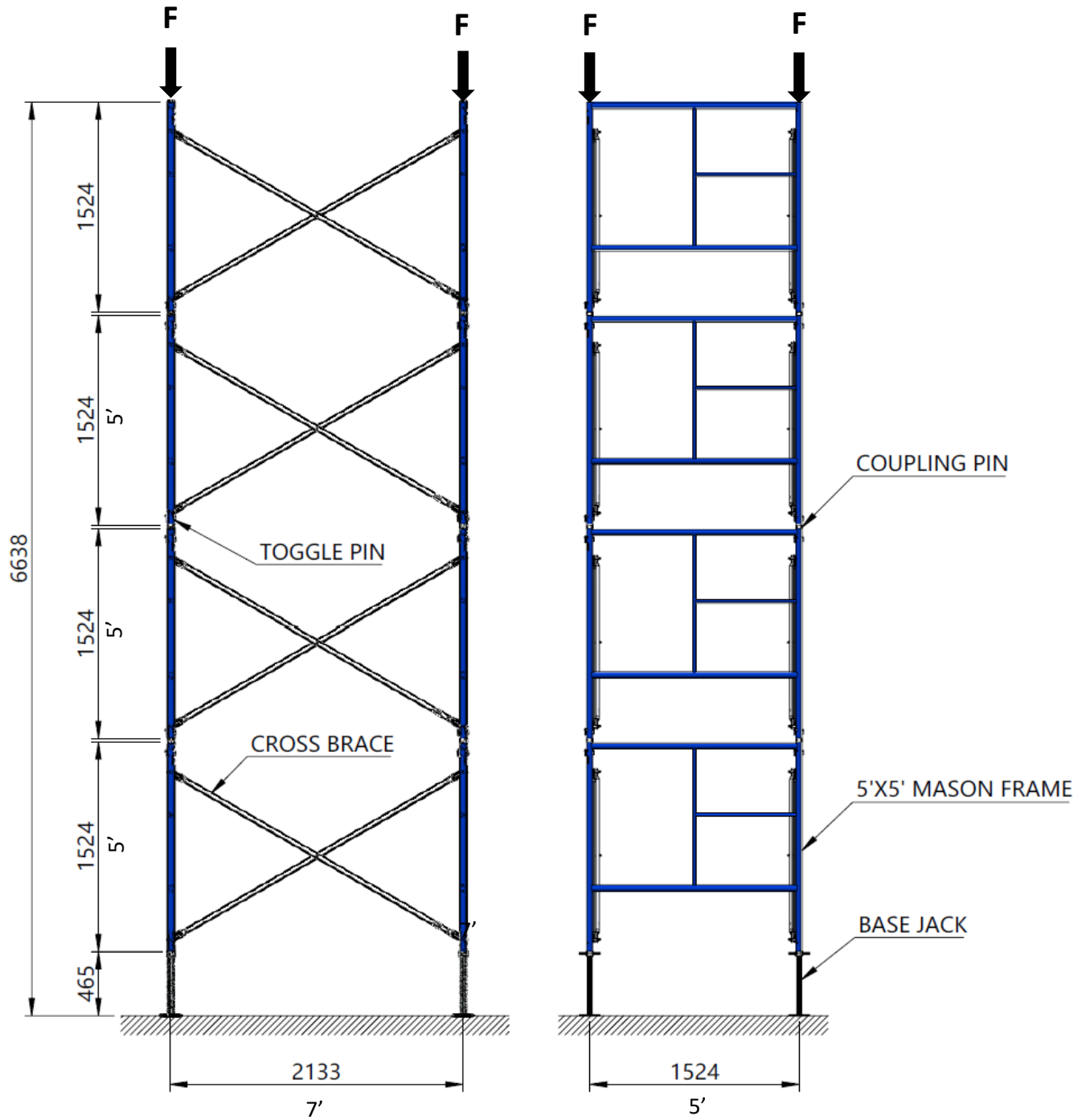


SWL for each Leg is: 2400 Lbs / Leg.

Factor of Safety: 4:1

[Go To Index Page...](#)

MASON FRAME 5'X5' LEG LOAD 4 TIERS



SWL for each Leg is: 3500 Lbs / Leg.

Factor of Safety: 4:1

[Go To Index Page...](#)