

# 10K SHORING SYSTEM

Product Catalogue

UPDATED ON: – 26-02-2024

**Address:**

11515 CROSBY FREEWAY, HOUSTON, TX-77013, USA

Email: [john.moran@technocraftgroup.com](mailto:john.moran@technocraftgroup.com)

[www.technocraftgroup.com](http://www.technocraftgroup.com)

**Introduction:**

Technocraft is a multi-product multinational group, which was established in 1972 by a group of technologists with the aim of manufacturing high precision and sophisticated products, for discerning worldwide markets. Technocraft enjoys a significant position in five main business industries, Scaffolding & Formwork Systems, Drum Closures, Pipes & Tubes, Engineering Services, and Cotton Yarn. We are an ISO 9001:2015 certified company. Headquartered in Mumbai (India), with overseas offices and warehouses in Manchester (U.K.), Lodz (Poland) & Budapest (Hungary), Chicago (U.S.A.), Houston (U.S.A.), and Qianjiao (China). Technocraft has attained an important qualification as a government-recognized Foreign Trading House.

**Vision:**

To lead the industry by providing innovative products, solutions, and support that exceed expectations.

**Mission:**

To positively impact the global community by providing Safe, Efficient, and Customer focused solutions in the factory and on the job site.

**Values:**

Quality – Trust – Leadership – Commitment – Innovation

**Our Company:**

The Technocraft family consists of more than 3000 skilled workers, technicians, and technologists. All of them are working towards the common goal of delivering the best quality products to our customers, around the world. The manufacturing process is continuously reviewed and upgraded with the latest technology to yield higher productivity and improved quality product. There are five manufacturing plants located near Mumbai, India providing over 50,000 square meters of production space. There is one location in China providing over 33,000 Square meters of production space.

**Our History:**

The company launched its first major export drive in 1977. It was recognized as an export house by the government of India in 1979. The company has won a number of awards for export excellence, since its inception, including the “Best Export Performance” awarded by the Prime Minister of India.

## **Milestones:**

- 1972** – Opened first manufacturing unit for Drum Closures
- 1977** – Launched first major export drive
- 1979** – Recognized as an Export House
- 1980** – Expanded Drum Closure Capacity
- 1993** – Setup its first foreign subsidiary in the UK
- 1994** – Acquired Maharashtra Steel Tubes Limited
- 1997** – Yarn Unit opens, 100% EOU
- 1998** – Subsidiary in Poland opens
- 2000** – Subsidiary in Hungary opens
- 2000** – Awarded the National Award for Export Excellence by the Ministry of Commerce and Industry, Award Presented by the Prime Minister of India “Shri. Atal Bihari Vajpayee.”
- 2000** – Technosoft Information Technologies, begins providing Engineering Software and Design Services.
- 2001** – Awarded Export Excellence Award for all steel products by the Engineering Export Promotion Council – Maharashtra.
- 2003** – Began marketing Garments as – Danube Fashions Limited
- 2004** – Received the 3 Star Export House Certificate
- 2005** – Subsidiary in Germany opens
- 2005** – Launched “Haute Chilli” Brand in India
- 2006** – Subsidiary in Australia opens
- 2006** - Filed the DRHP with SEBI
- 2007** – Listed on the Mumbai Stock Exchange and the National Stock Exchange
- 2008** – Built 15MW power plant
- 2009** – Established manufacturing plant in CHINA
- 2010** – Joint Venture with a Canadian company for manufacturing building formworks

**2011** – Expanded product offering to include the Design & Manufacturing of custom formwork for Infrastructure Projects and Transmission & Telecom Towers

**2013** – Acquired Calgary-based EPCM Company – Swift Engineering Inc.

**2015** – Acquired AA International Trading LL (AAIT), in the U.S.A., to establish a full scale scaffold distribution presence in North America.

**2015** – Opened a new Distribution yard in Houston, U.S.A.

**2015** – Received star Export performer award from EEPIC. India

**2016** – Introduced the Mach Brand of Scaffolding & Formwork Products

**2018** – Introduced Mach One Monolithic Formwork system

**2019** – Released the Mach Shoring Frame system for the Australian market.

**2020** – Began the sale and distribution of an Access Frame system in North America.

**2021** – Developed a Narrow Soldier System for the New Zealand market

**2022** – Developed a 10K Shoring System for USA market.

**2023** – Developed Mäch AluPly Aluminium Wallform System for Global Market.

### **Technical Services:**

Technocraft Industries has a staffed Design and Engineering department. This group provides innovative solutions to ever-changing challenges in the scaffold, shoring, and forming industry. They work closely with customers so that expectations are met and the project is kept on time and on budget.

### **Product Range:**

Technocraft Industries has been manufacturing and developing new and innovative products for the scaffold and formwork industries since 1998. We offer a full range of Formwork, Industrial and Commercial scaffold products that meet or exceed industry standards.

### **Quality Standards:**

Technocraft Industries follows BS, EN, AS/NZS, IS and ASTM standards in the designing and production of Scaffolding and Formwork systems. Production is strictly controlled within the tolerance of these standards using the latest production methods and modern machinery. Our Quality Control team is selected from long-serving and experienced personnel. The Quality Team is trained and supervised by Engineers. Products are checked during production to ensure the delivered product is on time and meets the customer's specifications and requirements. The company strictly follows the ideals of ISO 9001 and "Total Quality Management" applying these principles as a part of day-to-day operations.

### Technical Know-How:

Technocraft Industries has been working in this field since 1998, our experienced technical team has the knowledge and ability to design and manufacture scaffolding & formworks systems. We have expertise in castings, forgings, press work and general fabrication allowing us to produce the products our customers need, exceeding their expectations. Knowledge and experience along with design and structural calculation enable Technocraft Industries to provide design services to their customers.

### Technocraft's Advantage:

Technocraft is focused on their customer, understanding their needs, requirements, and expectations. This focus allows Technocraft to design processes, procedures and tooling in a manner that delivers products to the customer that meet required specifications and perform as expected. Technocraft is a vertically integrated manufacturer, from slitting to packing the manufacturing process occurs within the walls of their factory. This allows them the ability to monitor and control all aspects of production, keeping costs low and quality high.

### Infrastructure:

- 1) Toolroom with up to date machinery
  - 1) Electronic discharge Machines (EDM)
  - 2) Vertical Machining Centre (VMC)
  - 3) CNC Lathe Machines, Shapers and other conventions machines.
  - 4) Surface and Cylindrical Grinders
  - 5) Wire Cut Machines
  - 6) Drill Machines
- 2) Mechanical Presses with the capacity of 20 tons to 1000 tons
- 3) Hydraulics presses, press brakes and shearing machines up to 4.2m wide, up to 340 tons.
- 4) Welding Machines (MIG-MAG)
- 5) Bolt forming Headers with Thread rolling and Trimming Machines
- 6) Induction melting Furnace with the capacity of 500kgs / 350 KW
- 7) Forging press up to 1600 tons
- 8) Slitting line up to 8mm x 1800mm wide.
- 9) Three complete Tube rolling lines with open and close profile sections like round, square, rectangular and special wall form profile, steel planks etc.
- 10) Two Complete Hot Dip Galvanizing lines
- 11) Powder Coating line
- 12) Complete painting unit and Electro-plating line.

The **BEST** is yet to come

### Inspection, Measuring and Testing equipment:

- 1) Digital Height Master with Granite table 250mm × 1000mm × 2000mm
- 2) Co-ordinate Measuring Machine (C.M.M). Machine size: X-600, Y-800, Z-500
- 3) Profile projector with 10X magnified
- 4) ULTRA PRECISION TRIPLE SCAN LASER,
- 5) Digital Height master
- 6) Digital Vernier and Trammels up to 4.0meters
- 7) Hardness Testing Machine
- 8) V-notch Charpy Impact Testing Machine
- 9) Spectrometer for chemical analyses
- 10) Salt spray testing machine
- 11) Ultrasonic Testing Machine (UT) and Magnetic Particle Testing Machine (MPT)
- 12) Universal Testing Machines 400kN and 600kN.
- 13) Post shore / prop testing machine up to 5.0m height
- 14) Point and UDL load testing machine up to 3.0m length product
- 15) 3 Tier and 1 Tier load testing machines to find vertical leg loads up to 6.5m height.
- 16) 10 meter length Truss & Lattice girder UDL & Point Load testing machine.

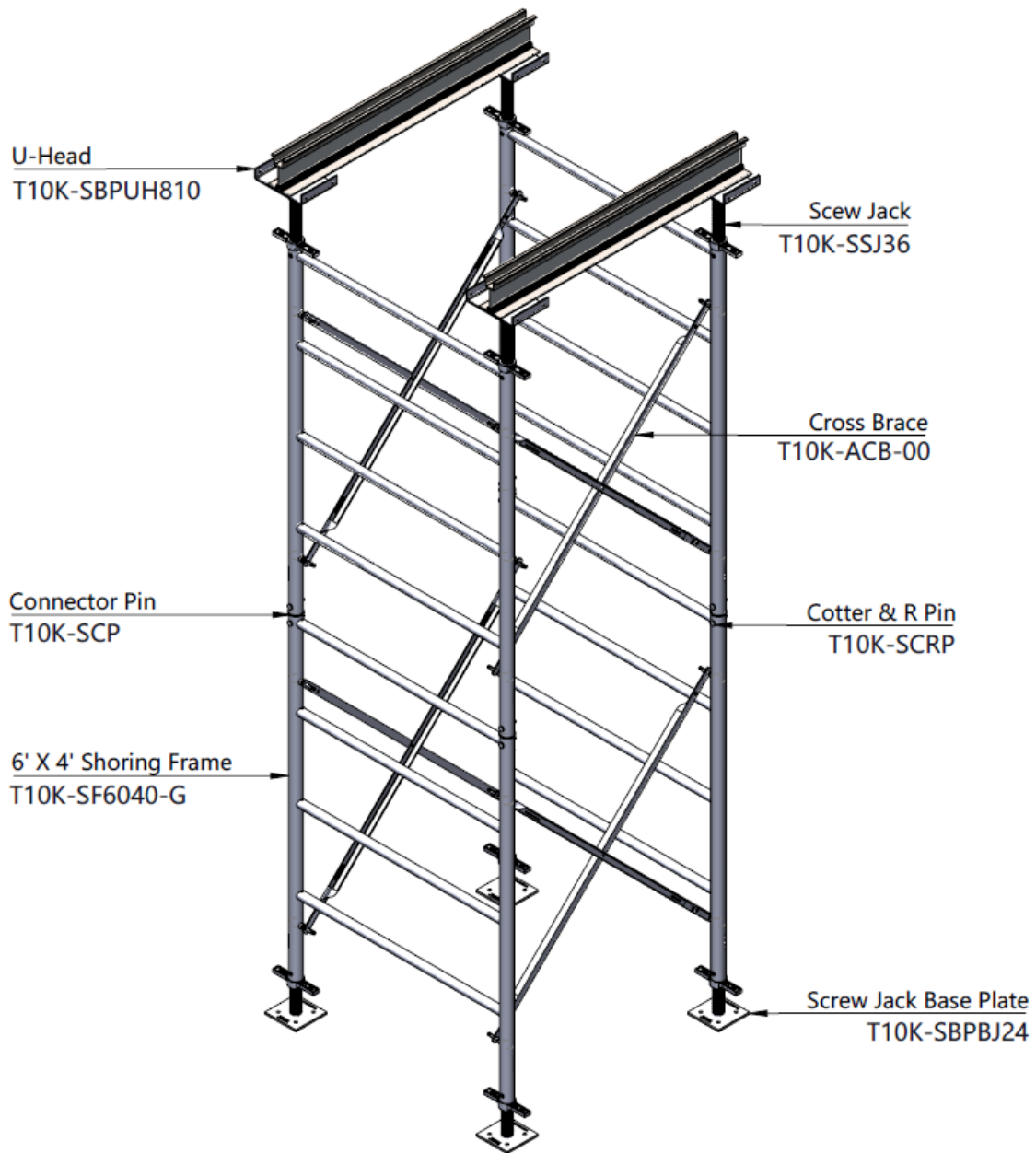
### Our Quality Policy:

**TECHNOCRAFT** is committed to being a leader in the design and manufacturing of scaffolding and will always deliver high-quality, innovative, products that meet or exceed our customers' expectations and requirements.

**TECHNOCRAFT** is committed to delivering defect-free products on schedule and on budget while maintaining compliance with applicable regulatory and industry standards.

- Welding Standards conform to AWS D1.1 / D1.1M and ISO 3834
- Welding Certification per EN 1090-2 and EN 1090-3 from SLV, Germany.
- Product certification for European Props as per EN 1065:1998 from Sigma Karlsruhe, Germany.
- Techlok System tested as per EN 12810/12811 at Oxford University England.
- Proven Quality System from Design to Delivery and beyond.
  - Selection of proper material and purchased from directly steel manufacturers only.
  - Material Testing (In-house & reputed Labs).
  - Material identification system.
  - Material review process before the material is released for production.
  - In-Process Quality monitoring system to ensure quality at every stage.
  - Periodic calibration of all measuring instruments, testing equipment, and Gauges.
  - Product testing
- Traceability, all products are marked with a code that identifies the batch and supporting process control documents.

# 10K SHORING SYSTEM



## TABLE OF CONTENTS

<b>SHORING SYSTEM</b>	
SHORING FRAMES .....	10
ANGULAR CROSS BRACE.....	12
CONNECTOR PIN.....	14
24" SCREW JACK FIXED PLATE .....	15
36" SCREW JACK.....	16
8"X 8" FOUR WAY U-HEAD (FOR SCREW) .....	17
U HEAD (FOR SCREW).....	18
J HEAD 5"X 8" (FOR SCREW).....	19
7" X 7" BASE PLATE (FOR FRAME) .....	20
7" X 7" BASE PLATE (FOR SCREW) .....	21
RIVET & HAIR PIN COTTER.....	22
23" SIDE BRACKET .....	23
<b>POST SHORE SYSTEM</b>	
POST SHORE .....	24
POST SHORE U HEAD.....	25
FIXED U HEAD (FOUR WAY).....	26
PROP FORK HEAD (FOUR WAY) .....	27
PROP TRIPOD FOR Ø60 MM .....	28
<b>ENGINEERING &amp; SAFE WORKING LOADS</b>	
BASE JACK.....	30
SCREW JACK WITH U HEAD .....	31
ONE TIER TEST .....	32
THREE TIER TEST.....	33
FOUR TIER TEST .....	34
ALLOWABLE LOADS FOR POST SHORE AT EVERY 4" (100MM). .....	35



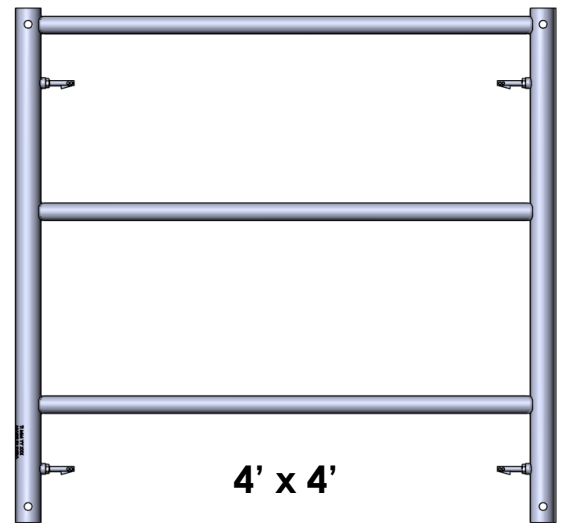
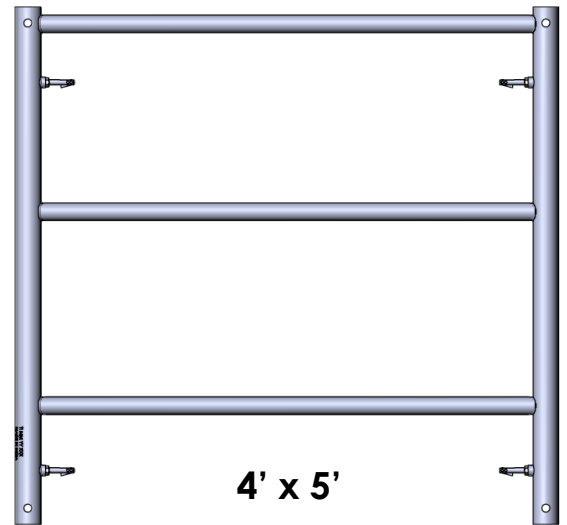
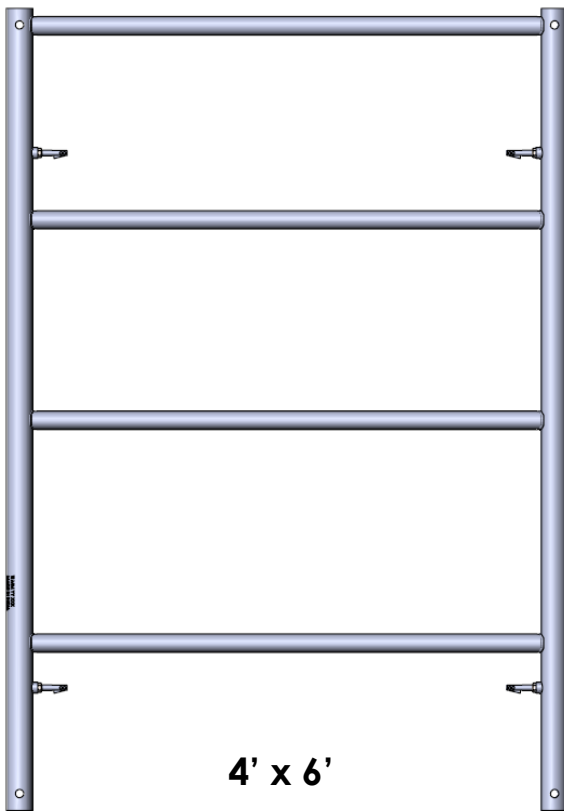
# 10K SHORING SYSTEM - Product Identification

[Go To Index Page...](#)

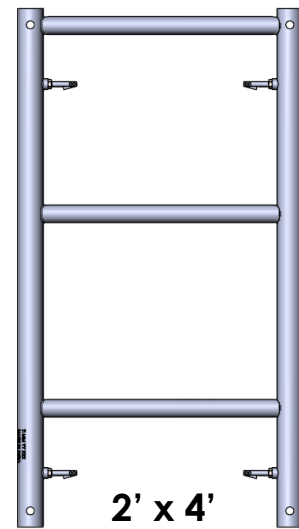
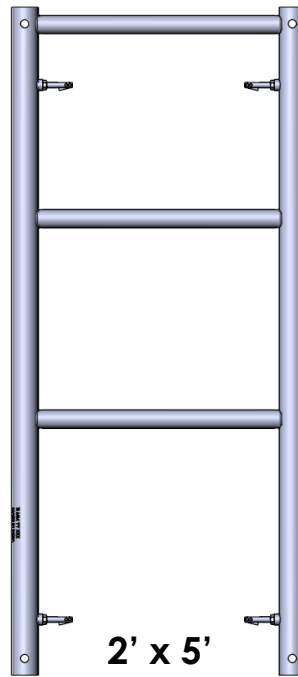
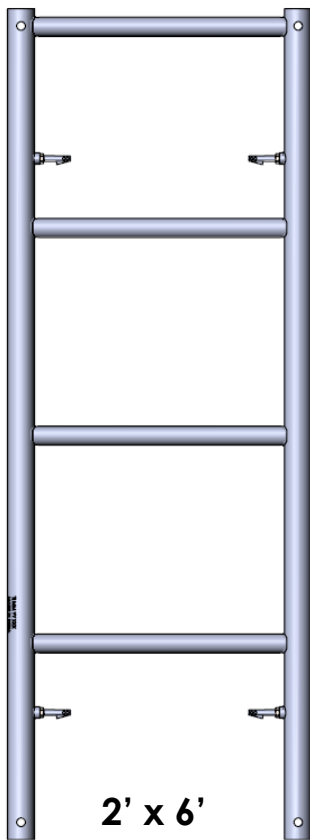
**SHORING FRAMES**

Shoring Frames are connected to each other via cross braces which space the Frames at a set distance.

**Finish:** HDG



Product Identification  
**10K SHORING SYSTEM**

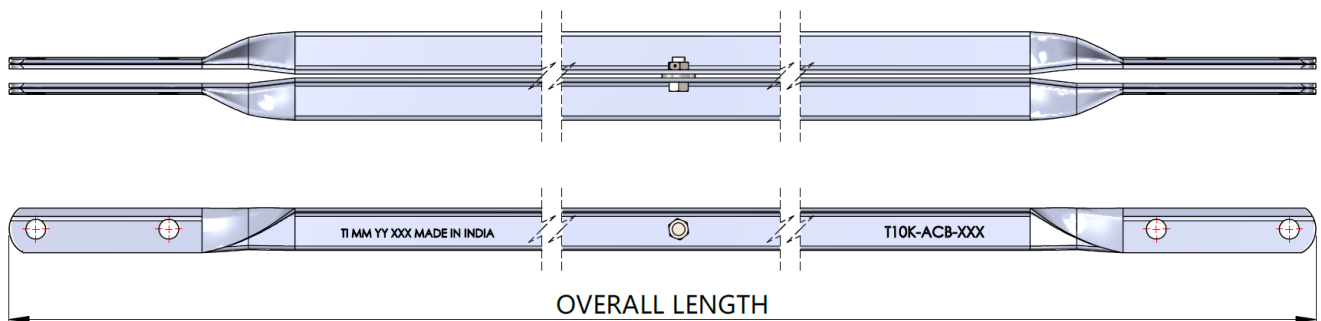
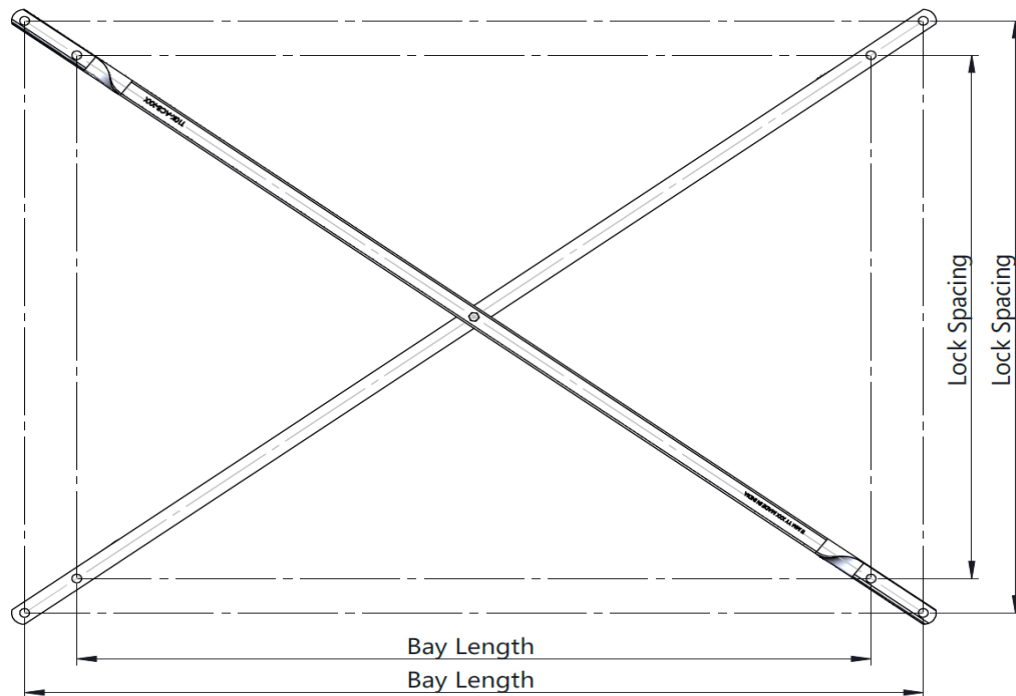


Product Code	Description	Weight		Packing	
		Lbs	Kg	Stillage	Quantity
T10K-SF6040-G	Shoring Frame 4' X 6'	68.1	30.9	Bundle	45 & 16
T10K-SF5040-G	Shoring Frame 4' X 5'	55.1	25.0	Bundle	45 & 16
T10K-SF4040-G	Shoring Frame 4' X 4'	47.9	21.7	Bundle	45 & 16
T10K-SF3040-G	Shoring Frame 4' X 3'	35.0	15.9	Bundle	45 & 16
T10K-SF6020-G	Shoring Frame 2' X 6'	55.5	25.2	Bundle	15
T10K-SF5020-G	Shoring Frame 2' X 5'	45.4	20.6	Bundle	15
T10K-SF4020-G	Shoring Frame 2' X 4'	38.6	17.5	Bundle	15
T10K-SF3020-G	Shoring Frame 2' X 3'	28.6	13.0	Bundle	15

### ANGULAR CROSS BRACE

Cross braces are used to set the bay length for the shoring frame system.

**Finish:** HDG



Product Identification  
**10K SHORING SYSTEM**



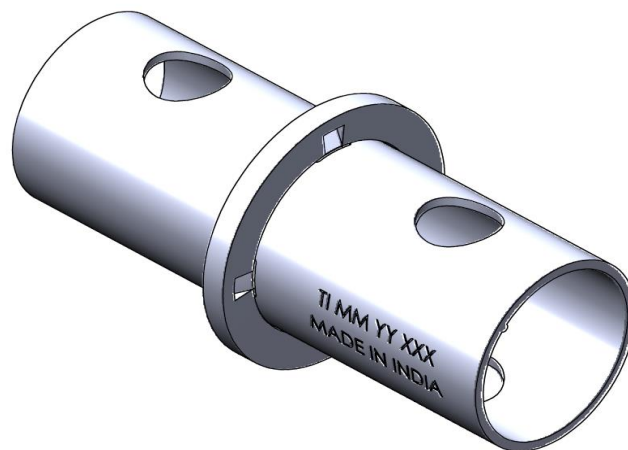
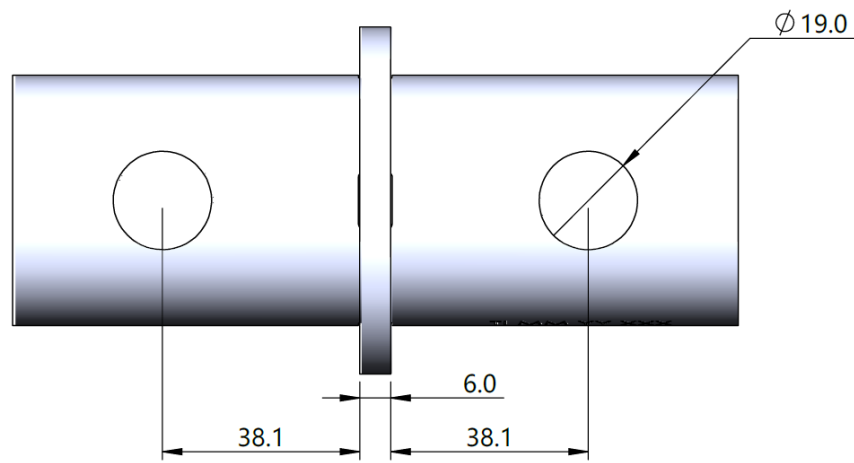
Lock Spacing		Bay Length					
		4'	5'	6'	7'	8'	10'
2'		T10K-ACB-423	T10K-ACB-523	T10K-ACB-623	T10K-ACB-723	T10K-ACB-823	T10K-ACB-1023
3'		T10K-ACB-423	T10K-ACB-523	T10K-ACB-623	T10K-ACB-723	T10K-ACB-823	T10K-ACB-1023
Overall Length	(Ft-In)	5'1"	5'11"	6'10"	7'9"	8'8"	10'7"
	MM	1564	1817	2085	2361	2644	3222
Weight	Lbs	10.6	12.2	14.0	15.8	17.7	21.5
	Kg	4.8	5.5	6.3	7.2	8.0	9.7
Packing	Stillage	Rack	Rack	Rack	Rack	Rack	Rack
	Quantity	300	300	300	300	300	300

Lock Spacing		Bay Length					
		4'	5'	6'	7'	8'	10'
3'		T10K-ACB-434	T10K-ACB-534	T10K-ACB-634	T10K-ACB-734	T10K-ACB-834	T10K-ACB-1034
4'		T10K-ACB-434	T10K-ACB-534	T10K-ACB-634	T10K-ACB-734	T10K-ACB-834	T10K-ACB-1034
Overall Length	(Ft-In)	5'9"	6'6"	7'4"	8'2"	9'	10'10"
	MM	1764	1991	2238	2497	2766	3322
Weight	Lbs	11.7	13.2	14.7	16.5	18.3	22.0
	Kg	5.3	6.0	6.7	7.5	8.3	10.0
Packing	Stillage	Rack	Rack	Rack	Rack	Rack	Rack
	Quantity	300	300	300	300	300	300

**CONNECTOR PIN**

Connector pins are designed to work with Shoring Frames, the holes will aligned two shoring frames. Rivet & Cotter Pins used to secure the connection.

**Finish:** Electroplating



\*50PC PER BAG

Product Code	Description	Weight		Packing	
		Lbs	Kg	Stillage	Quantity
T10K-SCP	Connector Pin	0.8	0.4	Basket	1100*

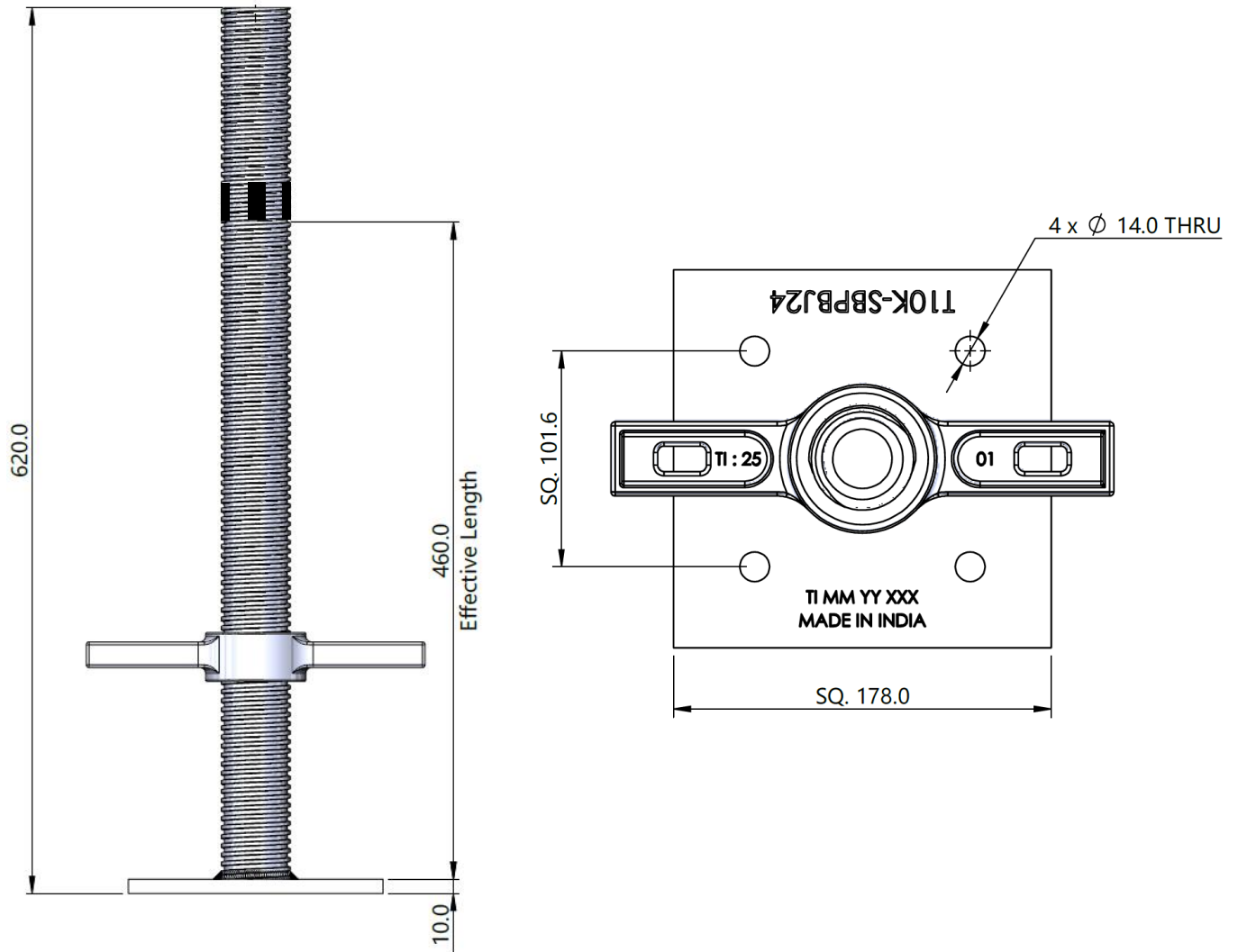
Product Identification  
**10K SHORING SYSTEM**



**24" SCREW JACK FIXED PLATE**

The Base Jack is used as a starting base for a Shoring. The vertical adjustment of the nut allows for the shoring to be level and plumb on uneven surfaces.

**Finish:** HDG



Product Code	Description	Weight		Packing	
		Lbs	Kg	Stillage	Quantity
T10K-SBPBJ24	24" Screw Jack Base Plate	14.4	6.5	Rack	170

[Go To Index Page...](#)

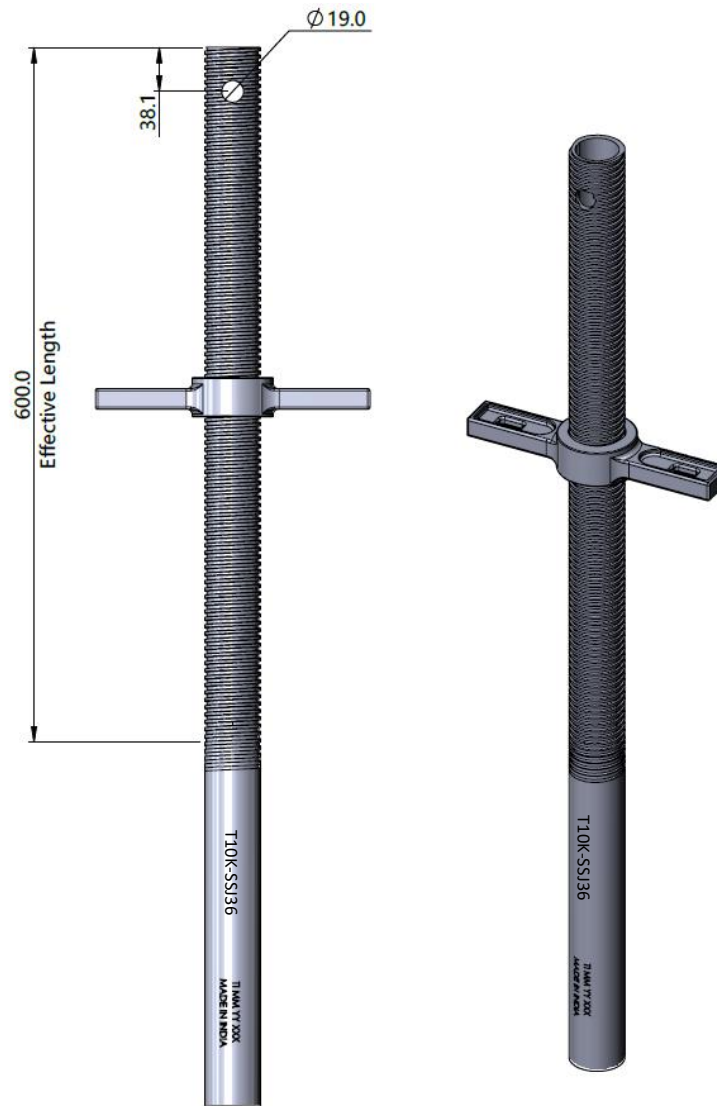
Product Identification  
**10K SHORING SYSTEM**



**36" SCREW JACK**

The Screw Jack is used at the end for a shoring frame. The vertical adjustment of the nut allows for the shoring to be level and plumb on uneven surfaces.

**Finish:** HDG



Product Code	Description	Weight		Packing	
		Lbs	Kg	Stillage	Quantity
T10K-SSJ36	36" Screw Jack	13.0	5.9	Rack	150

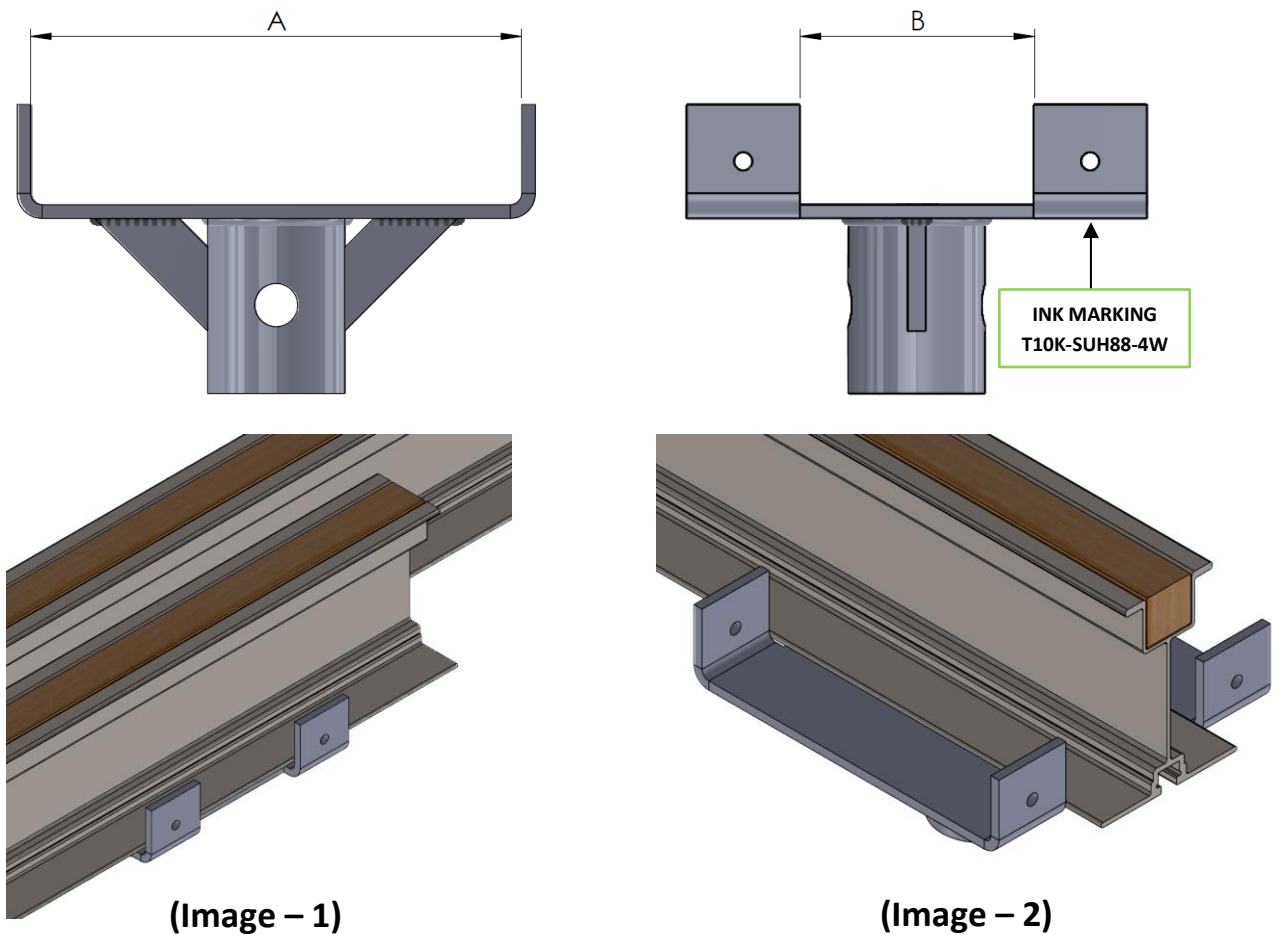
[Go To Index Page...](#)



**8" X 8" FOUR WAY U-HEAD (FOR SCREW)**

The Two-way U-Head is a versatile part that can be used at the top or bottom. The U-Shaped head is used to center the shoring on a beam when building up off of a beam or when supporting a beam in a shoring application. The wide direction will allow two standard aluminium beams to bypass each other (Image-1); the narrow opening is for a single beam (Image-2).

**Finish:** HDG



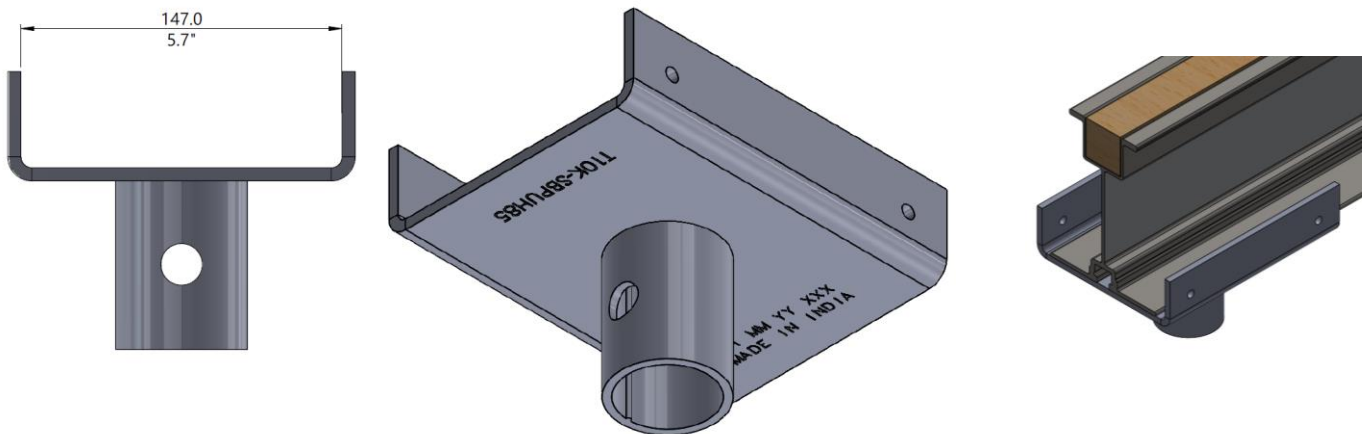
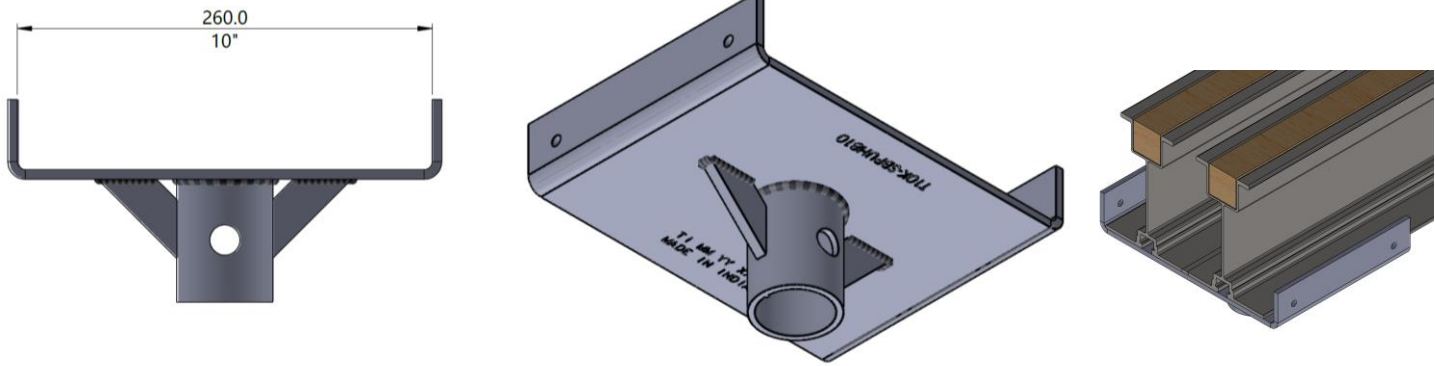
**USED WITH SCREW JACK: T10K-SSJ36**

Product Code	Description	Size (Inch)		Weight		Packing	
		A	B	Lbs	Kg	Stillage	Quantity
T10K-SUH88-4W	8" x 8" Four Way U-Head	8.5"	4.0"	6.6	3.0	Basket	

**U HEAD (FOR SCREW)**

The U-Head is a versatile part that can be used at the top or bottom of Shoring System. The U-Shaped head is used to center the shoring on a beam when building up off of a beam or when supporting a beam in a shoring application. The 8x10 U-Head will allow two standard 5" flange beam to bi-pass each other.

**Finish:** HDG



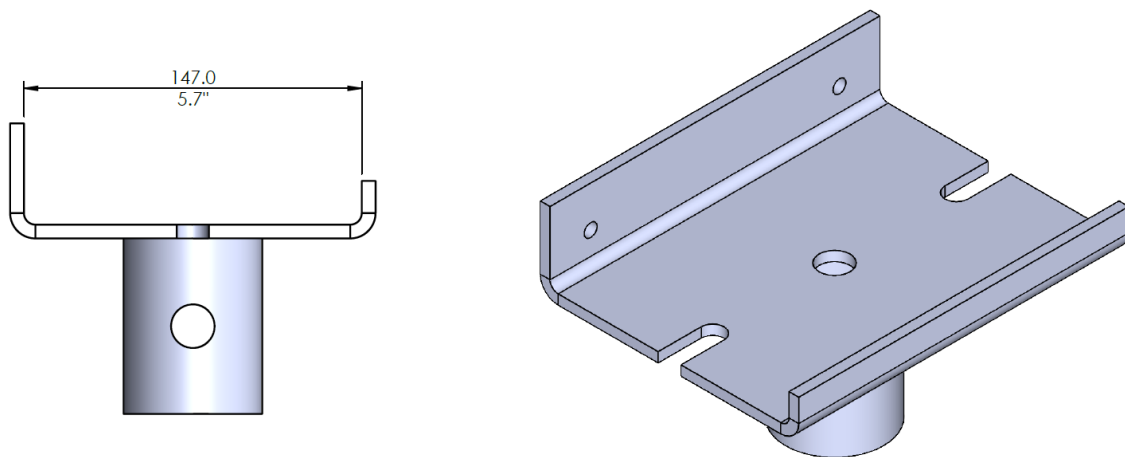
**USED WITH SCREW JACK: T10K-SSJ36**

Product Code	Description	Weight		Packing	
		Lbs	Kg	Stillage	Quantity
T10K-SBPUH810	8" x 10" U Head	8.8	4.0	Basket	135
T10K-SBPUH85	8" x 5" U Head	6.0	2.7		

**J HEAD 5"X 8" (FOR SCREW)**

J Head is utilized to support a flange Beam at the top of the Post Shore. The 5"x8" J-Head allows one standard 5" flange beam to pass through.

**Finish:** HDG



Product Code	Description	Weight		Packing	
		Lbs	Kg	Stillage	Quantity
T10K-SJH58	5" x 8" J Head	5.4	2.5	Basket	250

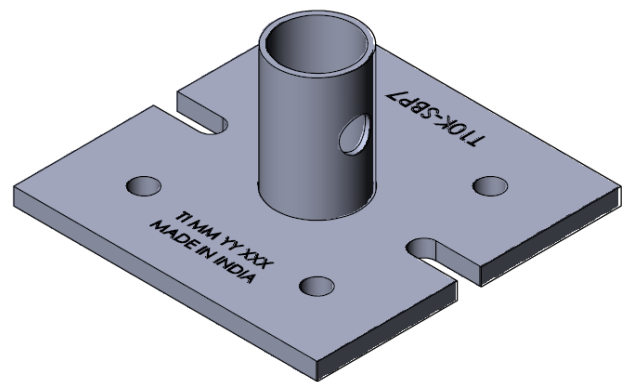
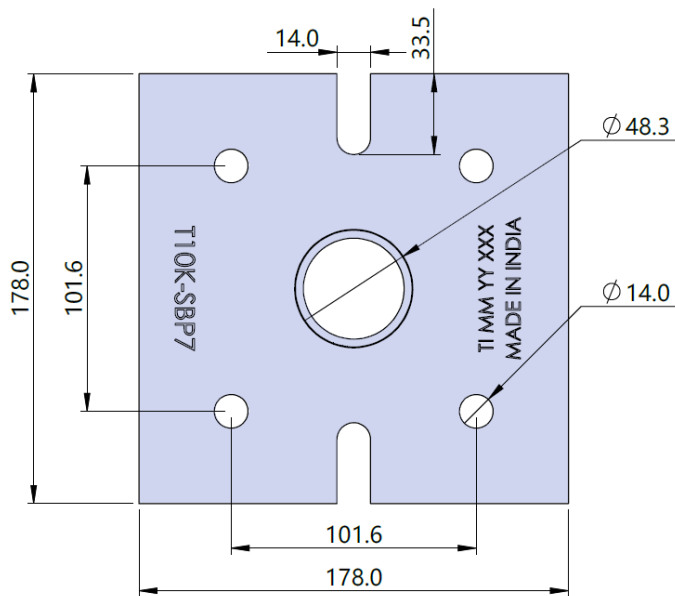
Product Identification  
**10K SHORING SYSTEM**



**7" X 7" BASE PLATE (FOR FRAME)**

Base Plates can be used in lieu of the Base Jack below the Shoring Frame leg when Minimum height is required.

**Finish:** HDG

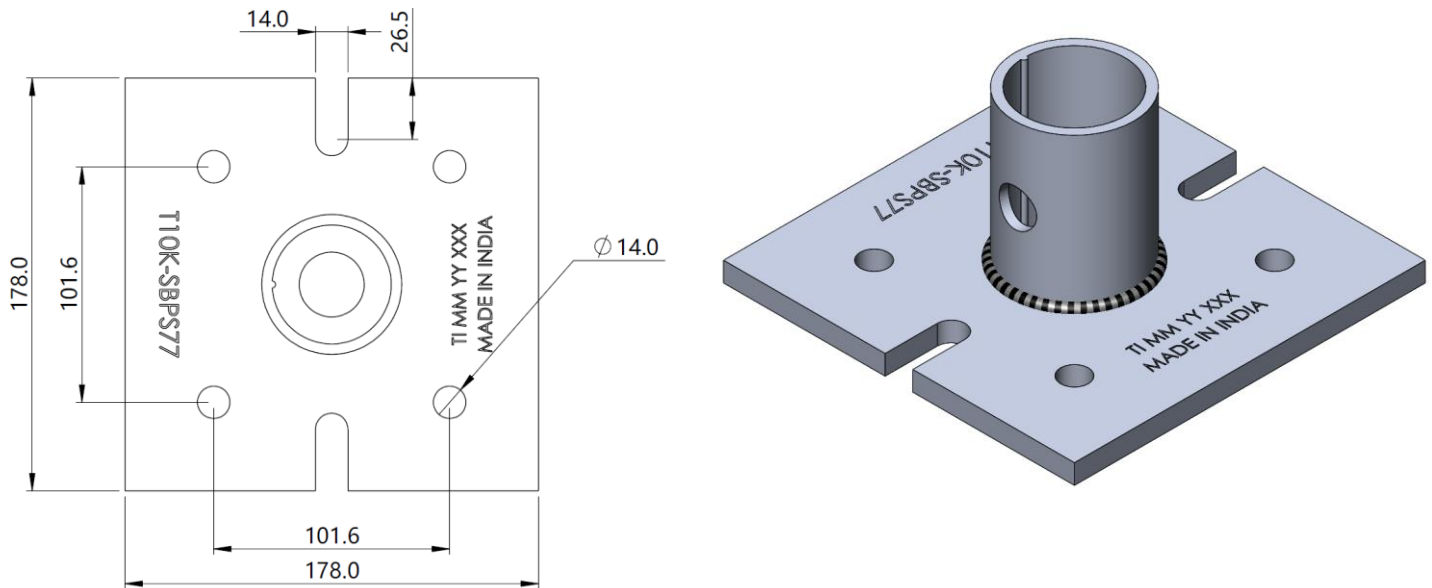


Product Code	Description	Weight		Packing	
		Lbs	Kg	Stillage	Quantity
<b>T10K-SBP7</b>	<b>7" X 7" Base Plate ( For Frame)</b>	<b>5.5</b>	<b>2.5</b>	<b>Basket</b>	

**7" X 7" BASE PLATE (FOR SCREW)**

Base Plates can be used in lieu of the Base Jack below the Shoring Frame leg when Minimum height is required. This base plate is used with the screw jack to provide a method for levelling the shoring structure.

**Finish:** HDG



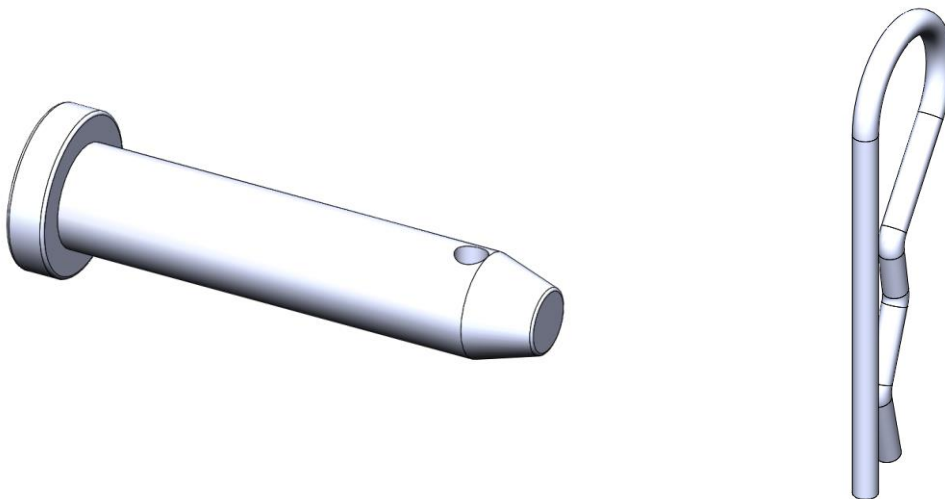
**USED WITH SCREW JACK: T10K-SSJ36**

Product Code	Description	Weight		Packing	
		Lbs	Kg	Stillage	Quantity
<b>T10K-SBPS77</b>	<b>7" X 7" Base Plate ( For Screw)</b>	<b>5.9</b>	<b>2.7</b>	<b>Basket</b>	

**RIVET & HAIR PIN COTTER**

Rivet & Hair Pin Cotter locks shoring frames with each other effectively using connector pin and aligned them vertically.

**Finish:** Electroplating



**\*TO BE SUPPLIED IN LOOSE CONDITION, IN SEPARATE BAG.**

Product Code	Description	Weight		Packing	
		Lbs	Kg	Stillage	Quantity
T10K-SCRP	Rivet & Hair Pin Cotter	0.4	0.2	Basket	50/Bag*

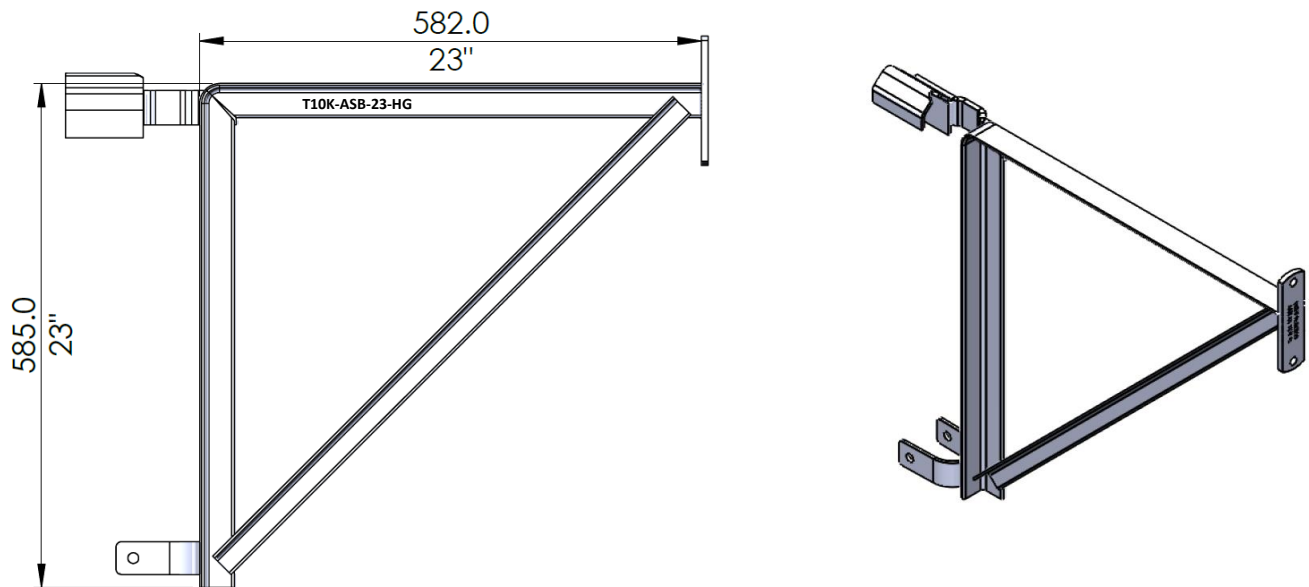
Product Identification  
**10K SHORING SYSTEM**



**23" SIDE BRACKET**

Side bracket with planks provide a platform for the workers working on shoring frames.

**Finish:** HDG



Product Code	Description	Weight		Packing	
		Lbs	Kg	Stillage	Quantity
T10K-ASB-23-G	23" Side Bracket	13.2	6.0		

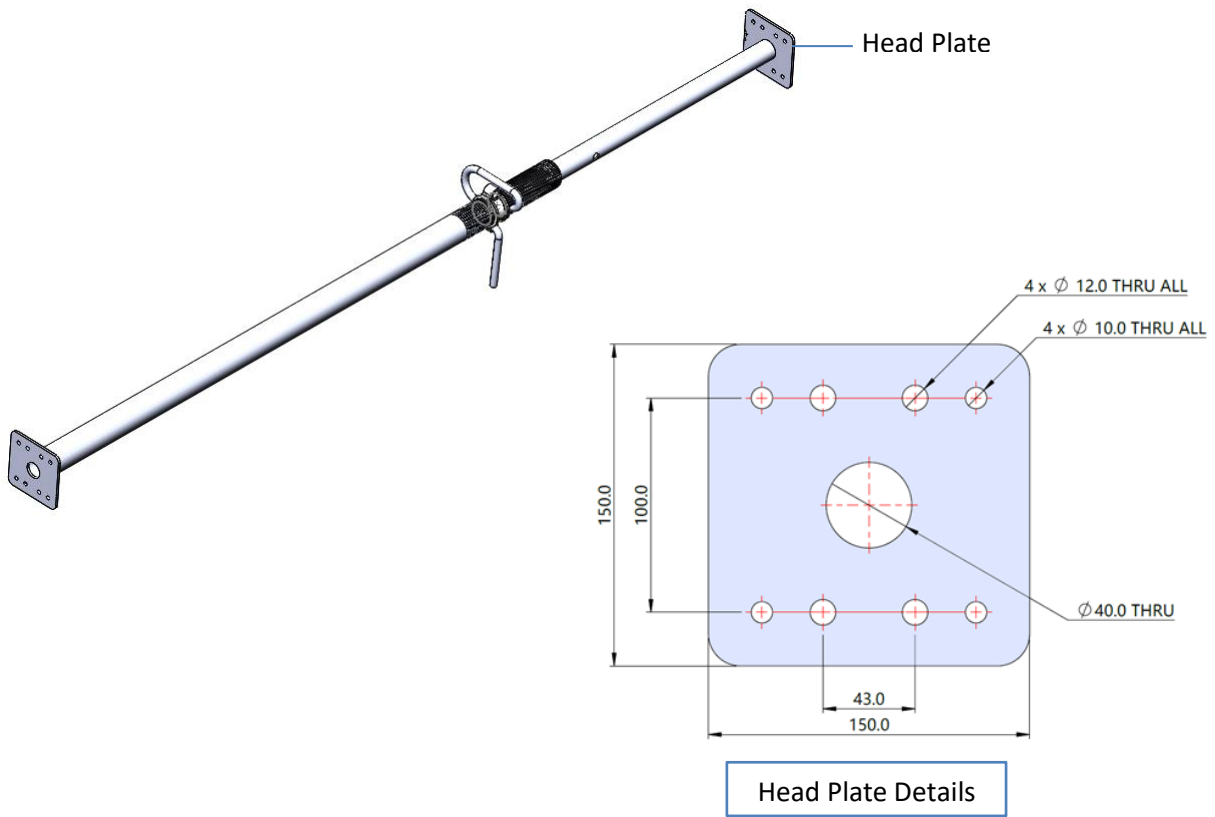
Product Identification  
**10K SHORING SYSTEM**



**POST SHORE**

Post Shores are used in various shoring and reshoring applications.

**Finish:** HDG



Product Code	Description	Size Range	Weight		Packing	
			Lbs	Kg	Stillage	Quantity
PS1-59-103	Post Shore (Normal Duty)	1.75M-3.13M-(5'9"-10'3")	43.8	19.9	Rack	60
PS2-66-110	Post Shore (Normal Duty)	1.98M-3.35M-(6'6"-11')	46.0	20.9	Rack	60
PS3-86-130	Post Shore (Normal Duty)	2.59M-3.96M-(8'6"-13')	52.1	23.7	Rack	60
PS4-106-160	Post Shore (Normal Duty)	3.20M-4.88M-(10'6"-16')	62.0	28.2	Rack	60

Product Code	Description	Size Range	Weight		Packing	
			Lbs	Kg	Stillage	Quantity
TEMP-D30-AT	Post Shore (Medium Duty)	1.71M-3.00M-(5'7"-9'10")	41.4	18.8	Rack	60
TEMP-D55-AT	Post Shore (Medium Duty)	3.0M-5.50M-(10'-18')	59.7	37.4	Rack	48

Product Code	Description	Size Range	Weight		Packing	
			Lbs	Kg	Stillage	Quantity
TEHP-E35-AT	Post Shore (Heavy Duty)	1.96M-3.50M-(6'5"-11'6")	53.9	24.5	Rack	54
TEHP-E40-AT	Post Shore (Heavy Duty)	2.20M-4.00M-(7'3"-13'1")	59.7	27.1	Rack	48

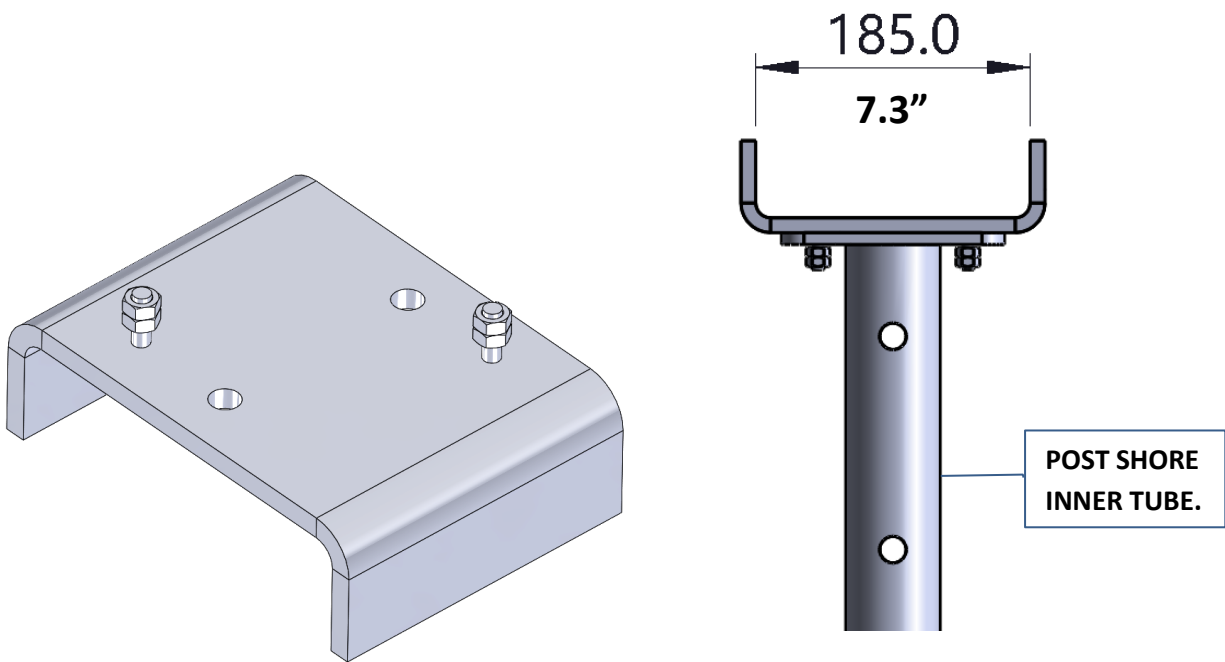
[Go To Index Page...](#)



**POST SHORE U HEAD**

This U-Head is designed to mount on the AAIT/Technocraft post shore. The opening is designed for H20 beams and aids in centring loads on the post during various shoring applications.

**Finish:** HDG

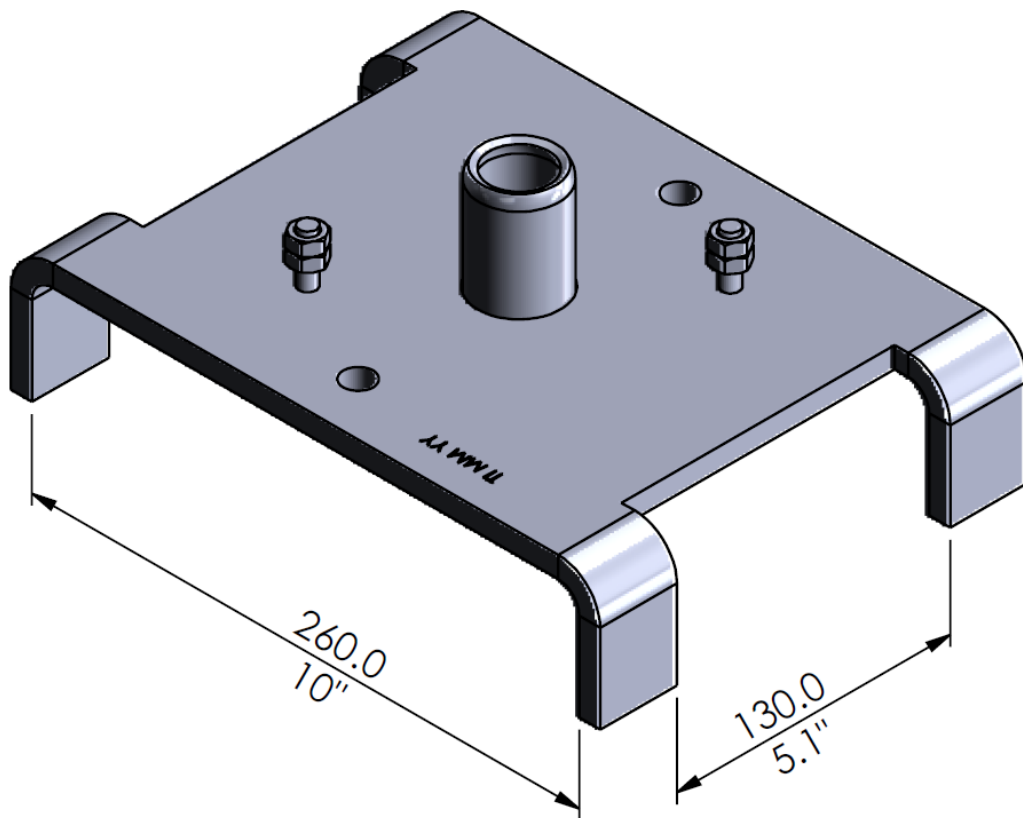


Product Code	Description	Size	Weight		Packing	
		Inch	Lbs	Kg	Stillage	Quantity
UHF 7-6	Post Shore U Head	7.3" X 5.9"	7.7	3.5	Basket	300

**FIXED U HEAD (FOUR WAY)**

This U-Head is designed to mount on the AAIT/Technocraft post shore. The wide direction will allow two standard aluminium beams to bypass each other; the narrow opening is for a single beam.

**Finish:** HDG

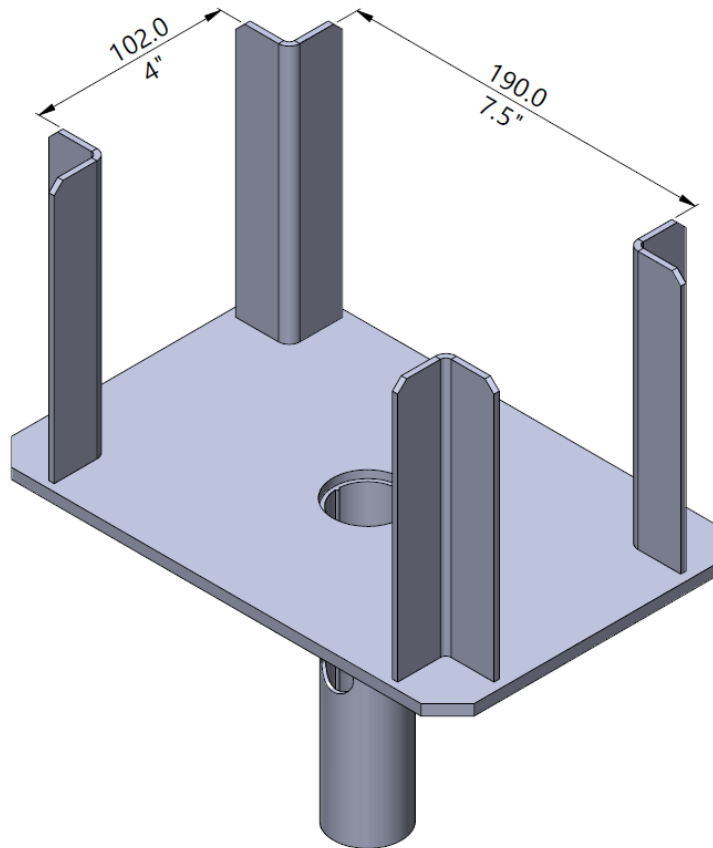


Product Code	Description	Size	Weight		Packing	
		Inch	Lbs	Kg	Stillage	Quantity
UHF 8-10	Fixed U Head - 4 way	8" X 10"	7.7	3.5	Basket	

**PROP FORK HEAD (FOUR WAY)**

Prop fork head are used in various shoring and reshoring applications. It allows to pass beams (7") in wide direction, and at the narrow direction it can accommodate (3.5") beams.

**Finish:** HDG

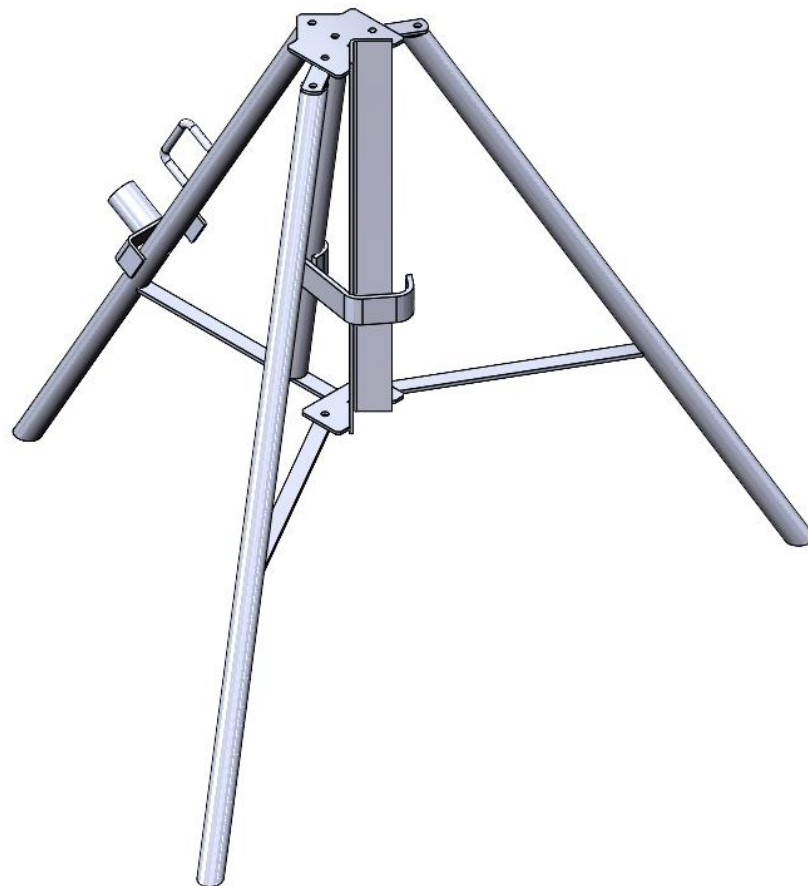


Product Code	Description	Size	Weight		Packing	
		Inch	Lbs	Kg	Stillage	Quantity
PRP-FK-3.5-7	Prop fork head (Four Way)	7.5" X 4"	7.0	3.2	Basket	

**PROP TRIPOD FOR Ø60 MM**

In addition to the props themselves, prop tripods work together with them. They are attached to the bottom of the props and serve as a safety net during working hours.

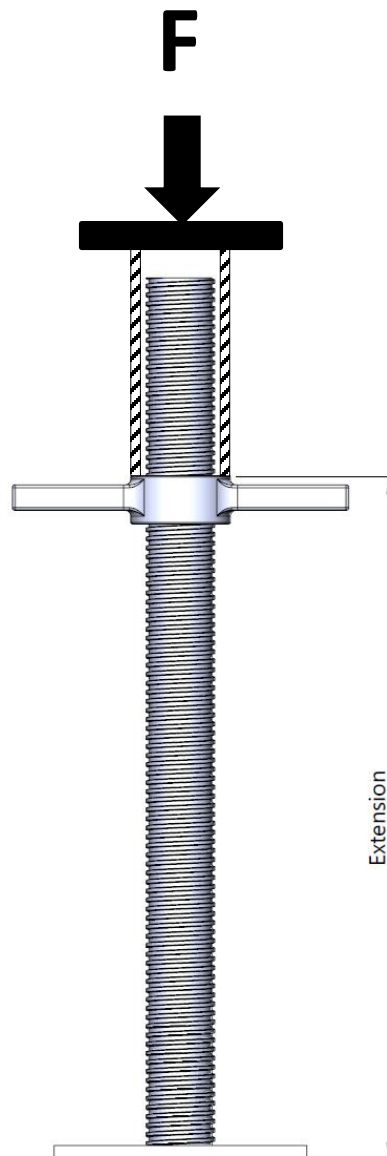
**Finish:** HDG



Product Code	Description	Weight		Packing	
		Lbs	Kg	Stillage	Quantity
KITL-5010	Prop Tripod for OD 60 mm	33.7	15.3		

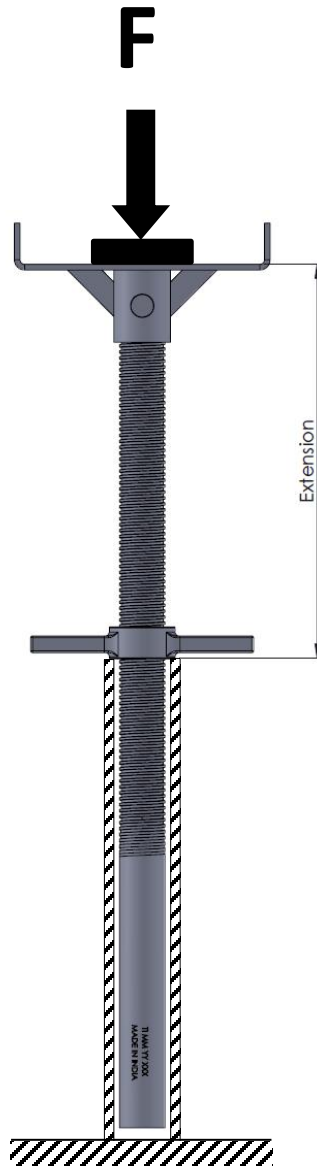
# **ENGINEERING & LOADING DATA**

**BASE JACK**



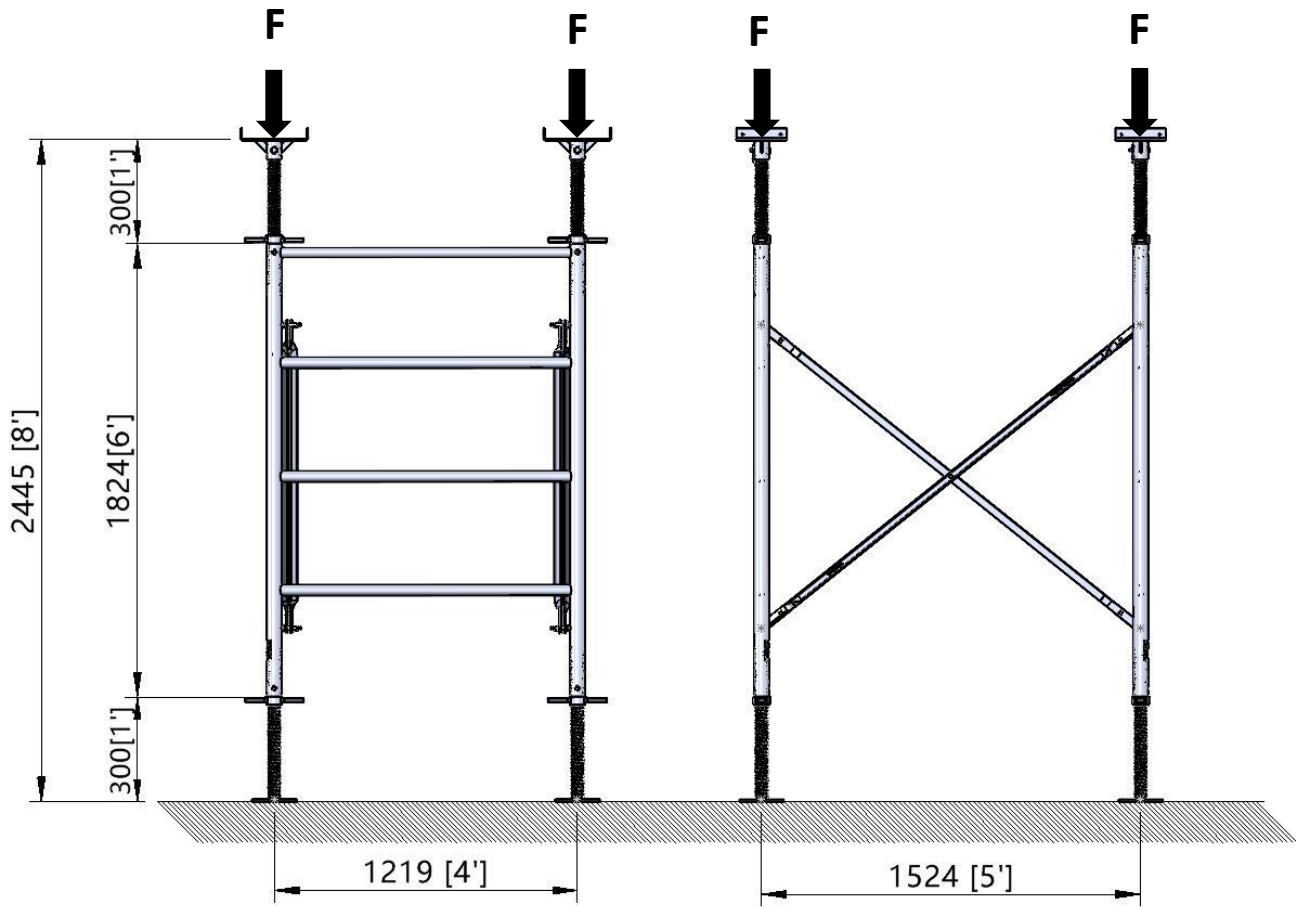
Product Code	Description	Extension		Safe Work Load		Weight	
		Inch	MM	Lbs	kN	Lbs	Kg
T10K-SBPBJ24	24" Screw Jack Base Plate	6"	152.0	18500.0	82.0	14.3	6.5
		12"	305.0	17000.0	75.5		
		18"	455.0	16000.0	71.0		

**SCREW JACK WITH U HEAD**



Product Code	Description	Extension		Safe Work Load		Weight	
		Inch	MM	Lbs	kN	Lbs	Kg
T10K-SSJ36	36" Screw Jack with 8"x10" U Head	12"	305.0	16000.0	71.0	13.0	5.9
		24"	609.0	15500.0	69.0		

**ONE TIER TEST**

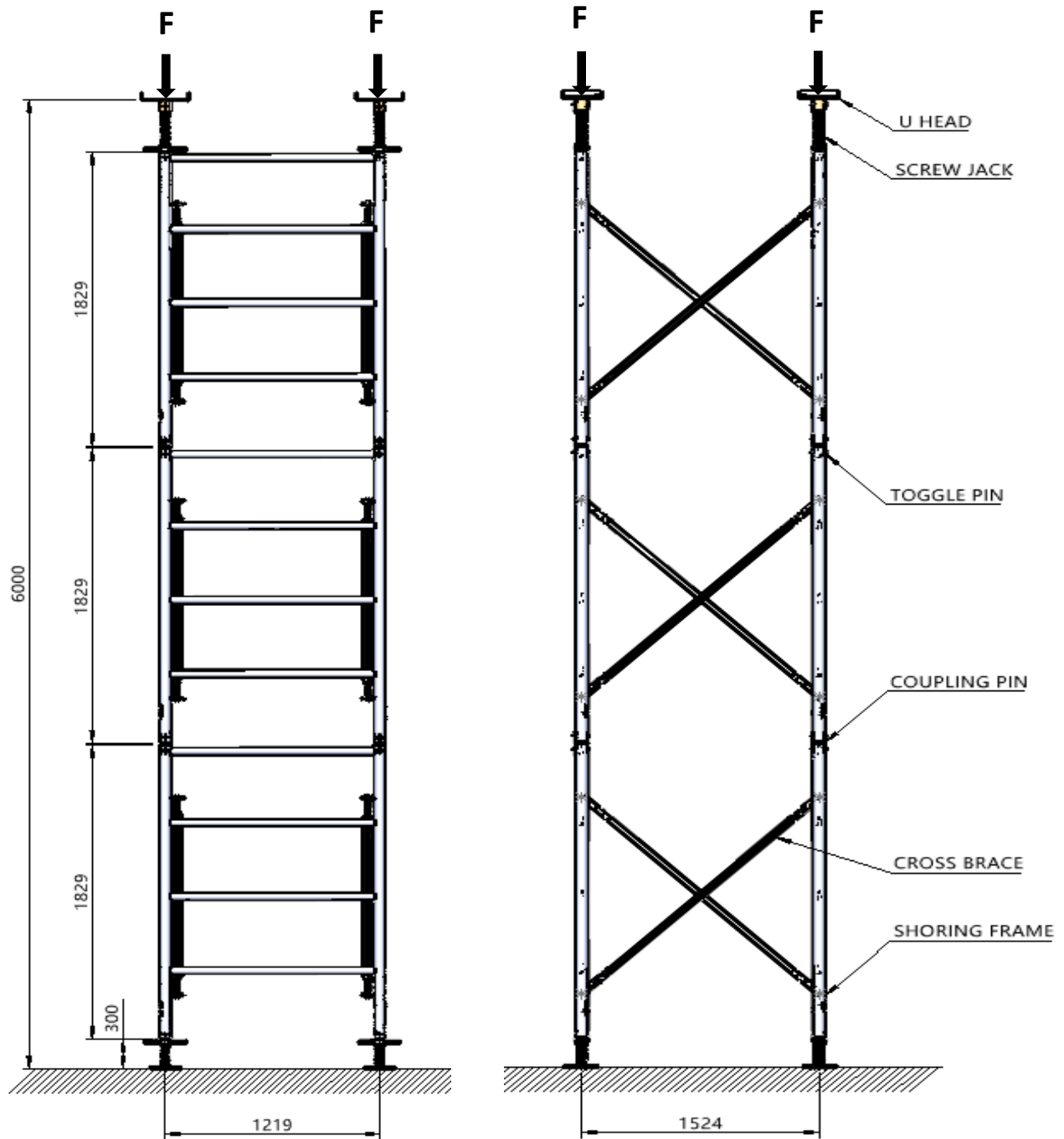


**SWL for Leg Loading of each vertical: 14000 Lbs/Leg (62.2 kN/Leg).**

**Factor of Safety: 2.5:1**



**THREE TIER TEST**

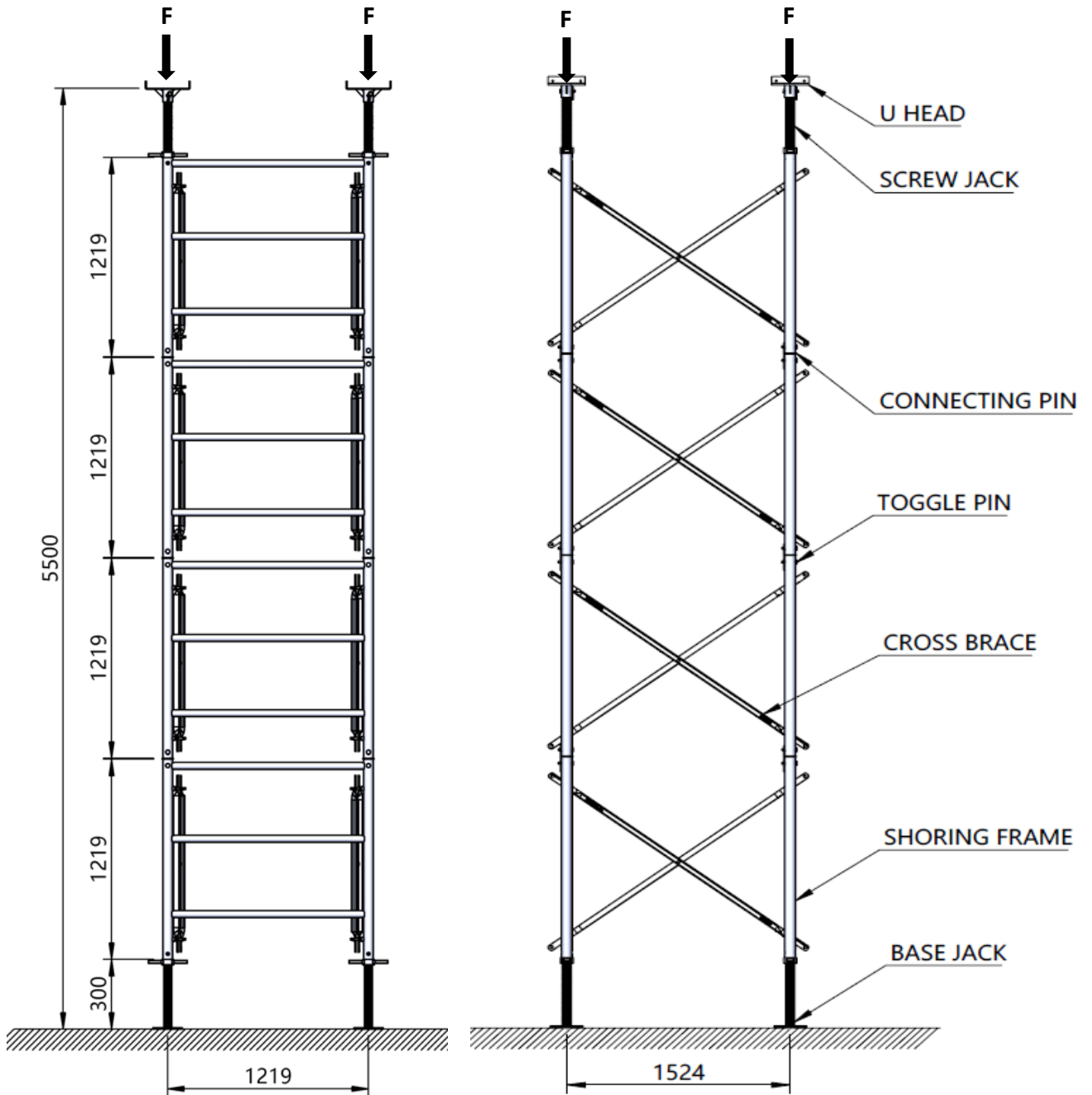


**SWL for Leg Loading of each vertical: 12000 Lbs/Leg (53.4 kN/Leg).**

**Factor of Safety: 2.5:1**

[Go To Index Page...](#)

**FOUR TIER TEST**



**SWL for Leg Loading of each vertical: 13500 Lbs/Leg (60.0 kN/Leg)**

**Factor of Safety: 2.5:1**

[Go To Index Page...](#)

**ALLOWABLE LOADS FOR POST SHORE AT EVERY 4" (100MM).**

**1) POST SHORE PS TYPE 1, 2, 3 & 4**

**LOAD**



FACTOR OF SAFETY – 3:1

Post Shore PS Type 1, 2, 3 & 4 Safe Working Load									
Extend Dimensions		POST SHORE 1-SWL		POST SHORE 2-SWL		POST SHORE 3-SWL		POST SHORE 4-SWL	
Ft-In	Meters	Lbs	Kgs	Lbs	Kgs	Lbs	Kgs	Lbs	Kgs
5'9"	1.7	5841	2655						
6'0"	1.8	5812	2642						
6'4"	1.9	5786	2630						
6'6"	2.0	5757	2617	6340	2876				
6'10"	2.1	5729	2604	6270	2844				
7'2"	2.2	5702	2592	6199	2812				
7'6"	2.3	5674	2579	6129	2780				
7'10"	2.4	5645	2566	6058	2748				
8'2"	2.5	5562	2528	5988	2716				
8'6"	2.6	5478	2490	5915	2683	6340	2876		
8'10"	2.7	5394	2452	5853	2655	6270	2844		
9'2"	2.8	5313	2415	5710	2590	6202	2813		
9'6"	2.9	5229	2377	5567	2525	6131	2781		
9'10"	3.0	5146	2339	5423	2460	6063	2750		
10'2"	3.1	5062	2301	5280	2395	5992	2718		
10'6"	3.2			5135	2329	5924	2687	3894	1770
10'10"	3.3			4991	2264	5853	2655	3832	1742
11'2"	3.4			4877	2212	5635	2556	3773	1715
11.6"	3.5					5417	2457	3711	1687
11'10"	3.6					5198	2358	3652	1660
12'2"	3.7					4982	2260	3590	1632
12'5"	3.8					4760	2159	3529	1604
12'9"	3.9					4542	2060	3469	1577
13'1"	4.0					4389	1991	3408	1549
13'5"	4.1							3322	1510
13'9"	4.2							3238	1472
14'1"	4.3							3153	1433
14'5"	4.4							3067	1394
14'9"	4.5							2981	1355
15'1"	4.6							2897	1317
15'5"	4.7							2812	1278
15'9"	4.8							2726	1239

**2) POST SHORE D-CLASS & E-CLASS**

**LOAD**



**FACTOR OF SAFETY – 3:1**

Post Shore D30 & D55 Safe Working Load					
Extend Dimensions		POST SHORE D30-SWL		POST SHORE D55-SWL	
Ft-In	Meters	Lbs	Kgs	Lbs	Kgs
5'9"	1.7	7106	3230		
6'0"	1.8	7091	3223		
6'4"	1.9	7073	3215		
6'6"	2.0	7058	3208		
6'10"	2.1	7042	3201		
7'2"	2.2	7027	3194		
7'6"	2.3	7009	3186		
7'10"	2.4	6842	3110		
8'2"	2.5	6675	3034		
8'6"	2.6	6508	2958		
8'10"	2.7	6343	2883		
9'2"	2.8	6175	2807		
9'6"	2.9	6008	2731		
9'10"	3.0	5841	2655	9929	4513
10'2"	3.1			9852	4478
10'6"	3.2			9777	4444
10'10"	3.3			9702	4410
11'2"	3.4			9627	4376
11'6"	3.5			9552	4342
11'10"	3.6			9478	4308
12'2"	3.7			9403	4274
12'5"	3.8			9328	4240
12'9"	3.9			9253	4206
13'1"	4.0			9178	4172
13'5"	4.1			9104	4138
13'9"	4.2			9029	4104
14'1"	4.3			8954	4070
14'5"	4.4			8700	3955
14'9"	4.5			8446	3839
15'1"	4.6			8192	3724
15'5"	4.7			7938	3608
15'9"	4.8			7684	3493
16'1"	4.9			7429	3377
16'5"	5.0			7175	3262
16'9"	5.1			6921	3146
17'1"	5.2			6667	3031
17'5"	5.3			6413	2915
17'9"	5.4			6159	2800
18'1"	5.5			5905	2684

Post Shore E35 & E40 Safe Working Load					
Extend Dimensions		POST SHORE E35-SWL		POST SHORE E40-SWL	
Ft-In	Meters	Lbs	Kgs	Lbs	Kgs
5'9"	1.7				
6'0"	1.8				
6'4"	1.9				
6'6"	2.0	10243	4646		
6'10"	2.1	10243	4646		
7'2"	2.2	10243	4646	9954	4515
7'6"	2.3	10243	4646	9866	4475
7'10"	2.4	10243	4646	9766	4430
8'2"	2.5	10243	4646	9667	4385
8'6"	2.6	10243	4646	9568	4340
8'10"	2.7	10243	4646	9469	4295
9'2"	2.8	10060	4563	9370	4250
9'6"	2.9	9877	4480	9270	4205
9'10"	3.0	9694	4397	9171	4160
10'2"	3.1	9511	4314	9072	4115
10'6"	3.2	9328	4231	8977	4081
10'10"	3.3	9145	4148	8933	4052
11'2"	3.4	8962	4065	8869	4023
11'6"	3.5	8779	3982	8805	3994
11'10"	3.6			8741	3965
12'2"	3.7			8677	3936
12'5"	3.8			8613	3907
12'9"	3.9			8550	3878
13'1"	4.0			8486	3849